

# NSCF 50-250/40/P45VCS4

## Technical data

Company name  
Contact  
Phone number  
e-mail address

Operating data			
1	Pumpe type	Single head pump	Fluid Water, pure
2	No. of pumps	1	Operating temperature t A °C 4
3	Nominal flow	m <sup>3</sup> /h 0	Max / Min Operating Temperature mech. Seal °C 120 / -25
4	Nominal head	m 0	pH-value at t A 7
5	Static head	m 0	Density at t A kg/m <sup>3</sup> 1000
6	Inlet pressure	kPa 0	Kin. viscosity at t A mm <sup>2</sup> /s 1.569
7	Environmental temperature	°C 20	Vapor pressure at t A kPa 100
8	Available system NPSH	m 0	Altitude 0

Pump data			
9	Lubrication	Standard, Grease lubrication [Std]	
10	Execution	[F] = 4 poles motor unit with standard cuopling	
11	Design	Horizontal	
12	Operating speed	1450 rpm	Stages 1
13	Suction nozzle	DN 65 / PN 16 / EN1092-2	Impeller Ø
14	Discharge nozzle	DN 50 / PN 16 / EN1092-2	
15	Max. casing pressure	kPa	Flow
16	Max. working pressure	kPa 224.1	
17	Impeller type	Radial impeller	
18	Head H(Q=0)	m 23	Head
19	Max. shaft power	kW 3.6	
20	Pump weight	kg 61	Shaft power kW
21	Total weight	kg 148.2	
			Efficiency %
			NPSH 3% m

Materials			
22		<b>Pump</b>	<b>Shaft Seal</b>
23	Volute Casing	Cast Iron	Single mechanical seal, without shaft sleeve
24	Casing Cover	Cast Iron	eMG12 - Ø28mm BQ7EGG-WA
25	Impeller	Fabricated Stainless Steel	Mechanical seal diameter 28 mm
26	Shaft	Stainless steel	1. Rotating ring Carbon graphite resin impregnated
27	Wear ring	Stainless steel	2. Stationary ring SiC, silicon carbide, sintered press. less
28	Impeller lock nut and washer	Stainless steel	3. Secondary seal Ethylene propylene rubber (EPDM)
29	Impeller key	Stainless steel	4. Springs CrNiMo - Steel
30	Fill and drain plugs	Stainless steel	5. Others EPDM - WRAS
31			Gaskets of the pump Ethylene propylene rubber (EPDM)
32			
33			
34			
35			
36			
37			
38			
39			
40			
41			

Motor data				Coupling			
42	Manufacturer	Lowara		Manufacturer	Flender		
43	Specific design	IE3 3ph Surface Motor - Premium Efficiency		Series	Standard Coupling - N-EUPEX - Type B		
44	Type	PLM 112 B3 4 kW		Shaft diameter	Pump 24 mm	Motor 28 mm	
45	Rated power	4 kW	Rated current 8.23 A	Frame size	68		
46	Nominal speed	1445 rpm	Rated voltage 400 V	Spacer length	mm 3		
47	Frame size	112	Service factor 1	Weight	kg 0.5		
48	Weight	kg 57.5	Degree of protection IP55	Coupling protection	COUPLGUARD 175x102PNTD		0.24 kg

Base plate			Remarks		
49	Name	BASE 4A 1000X450 BLU			
50	Weight	kg 28.9			

# NSCF 50-250/40/P45VCS4

## Performance curve

Company name  
Contact  
Phone number  
e-mail address

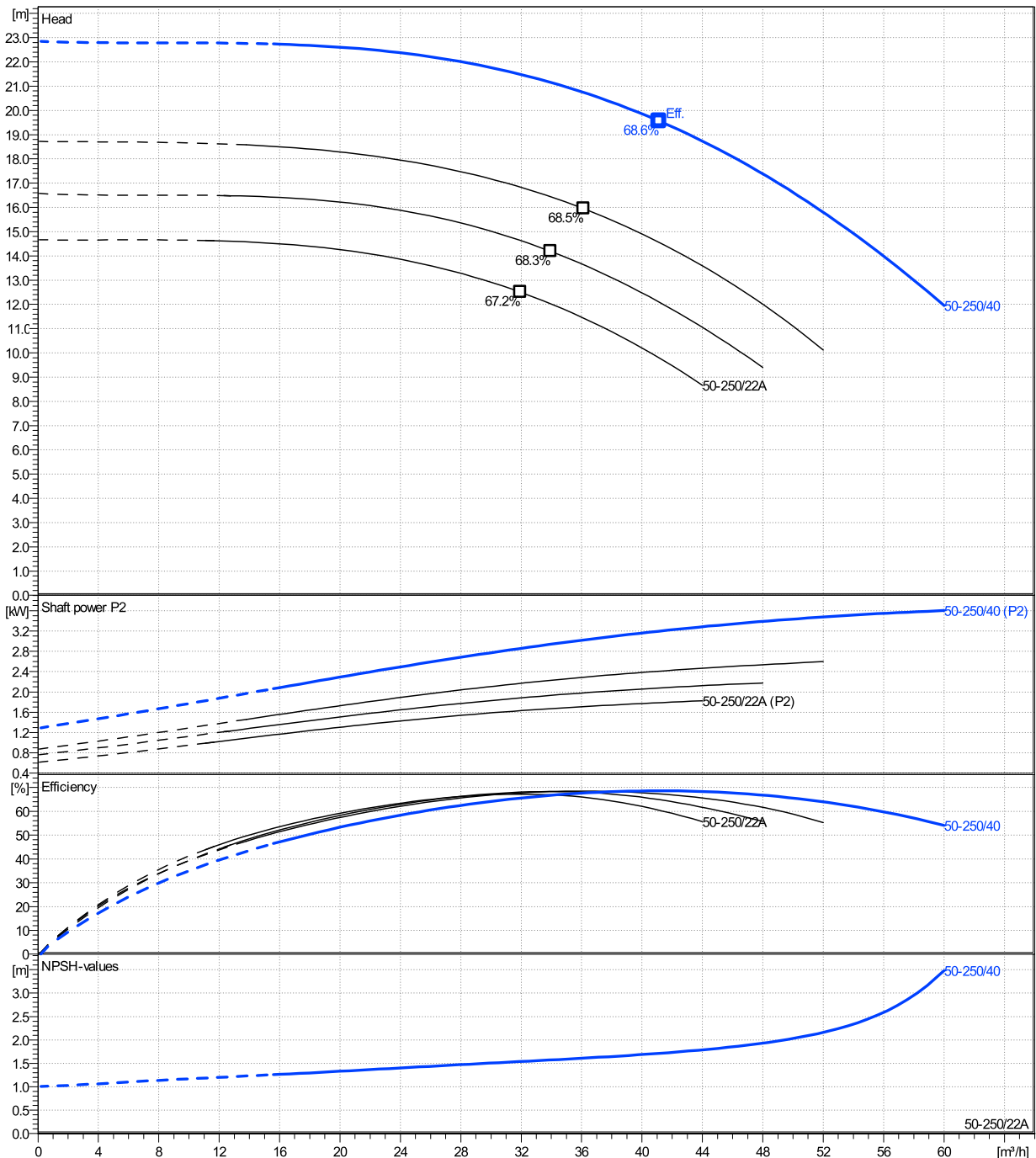
	Ø mm	Pump capacity			Pump head		Shaft power P2			Frequency	Hz	50
		Operating range Min. m³/h	Max. m³/h	η Max. m³/h	H(Q=0) m	η Max. m	P2(Q=0) kW	Max. kW	η Max. kW	Operating speed	rpm	1450
actual	256	16	60	41.1	22.8	19.6		3.6	3.2	Nominal flow	m³/h	0
Min.	0	/	/	31.9	14.7	12.5		/	1.63	Nominal head	m	0
Max.	256	/	/	41.1	22.8	19.6		/	3.2	Inlet pressure	kPa	0
										Static head	m	0

**Power datas referred to:**

Water, pure [100%] ; 4°C; 1000kg/m³; 1.57mm²/s

**hydr. Performance acceptance acc. To EN ISO 9906 Class Grade 3B**

MEI: >=0,4



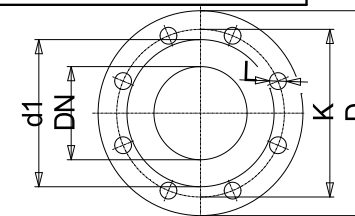
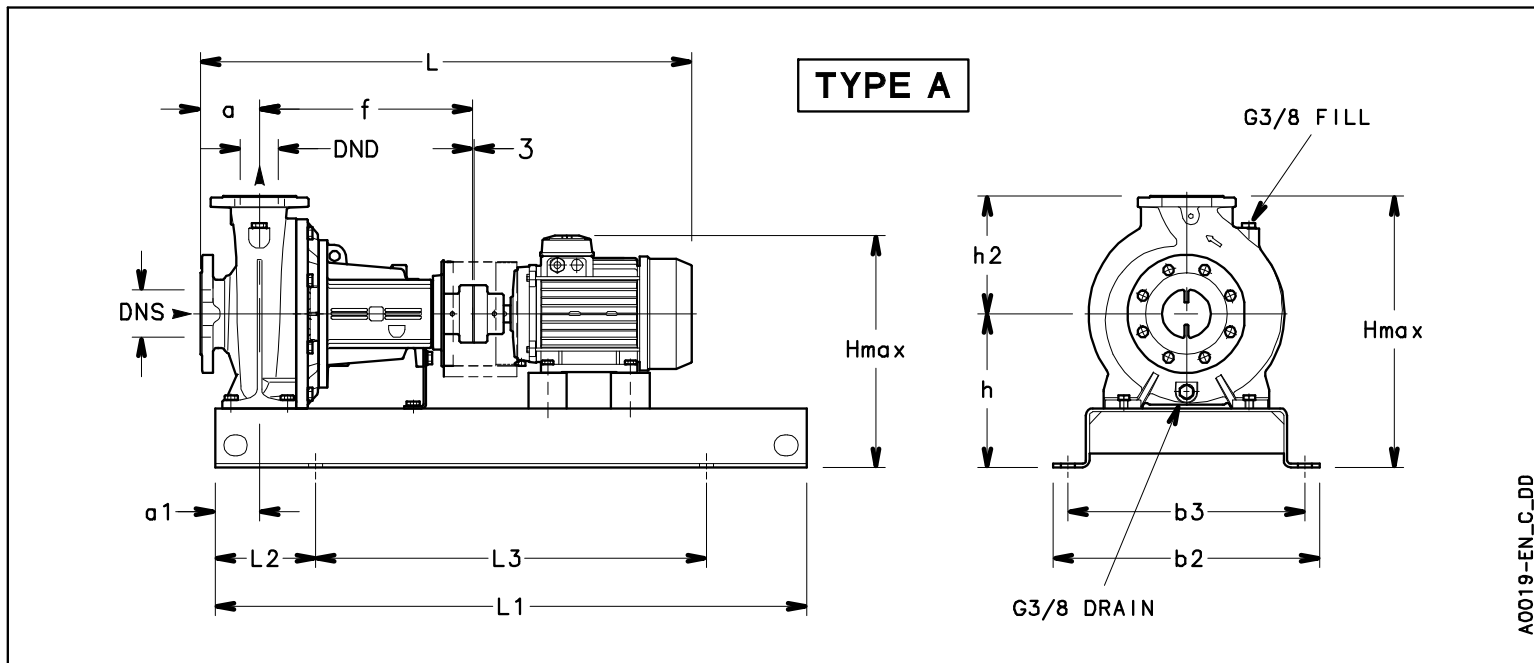
**NSCF 50-250/40/P45VCS4**

**Dimensions**

Company name  
Contact  
Phone number  
e-mail address

Frame mounted  
[F] = 4 poles motor unit with standard coupling  
PLM 112 B3 4 kW

Electrical and dimensional data refer to IE3 motor



Value C, D may vary from Standard

Dimensions		[ mm ]	
a	100		
a1	75		
AD	168		
b2	450		
b3	400		
DND	50		
DNS	65		
f	360		
Guard	113		
h	280		
h2	225		
Hmax	505		
L	921		
L1	1000		
L2	170		
L3	660		
s	4xØ24		
Type	A		
Volumen	0.2093		
x	3		

Weight	
Total weight	148.18 kg

Connections			
Suction nozzle		Discharge nozzle	
DN 65		DN 50	
PN 16		PN 16	
EN1092-2		EN1092-2	
C	20	C	20
D	185	D	165
df	118	df	99
DN	65	DN	50
K	145	K	125
L	4 x 19	L	4 x 19

**Dimensions and weight without obligation**

Project	Xylect-20101351	Created by		Last update	12/15/2024
Block	NSCF 50-250/300/L25VCS4	Created on	12/15/2024		