

NSCF 65-125/40/P25VCC4

Technical data

Company name
Contact
Phone number
e-mail address

Operating data				
1	Pumpe type	Single head pump	Fluid	Water, pure
2	No. of pumps	1	Operating temperature t A	°C 4
3	Nominal flow	m ³ /h 0	Max / Min Operating Temperature mech. Seal	°C 120 / -25
4	Nominal head	m 0	pH-value at t A	7
5	Static head	m 0	Density at t A	kg/m ³ 1000
6	Inlet pressure	kPa 0	Kin. viscosity at t A	mm ² /s 1.569
7	Environmental temperature	°C 20	Vapor pressure at t A	kPa 100
8	Available system NPSH	m 0	Altitude	0

Pump data				
9	Lubrication	Standard, Grease lubrication [Std]		
10	Execution	[F] = 2 poles motor unit with standard cuopling		
11	Design	Horizontal		
12	Operating speed	2900 rpm	Stages	1
13	Suction nozzle	DN 80 /	PN 16 /	EN1092-2
14	Discharge nozzle	DN 65 /	PN 16 /	EN1092-2
15	Max. casing pressure	kPa		
16	Max. working pressure	kPa	140.9	
17	Impeller type	Radial impeller		
18	Head H(Q=0)	m	14	
19	Max. shaft power	kW	3.8	
20	Pump weight	kg	45	
21	Total weight	kg	99.2	

Materials				
22		Pump		Shaft Seal
23	Volute Casing	Cast Iron		Single mechanical seal, without shaft sleeve
24	Casing Cover	Cast Iron		eMG12 - Ø22mm
25	Impeller	Cast Iron		Mechanical seal diameter
26	Shaft	Stainless steel		22 mm
27	Wear ring	Stainless steel		1. Rotating ring
28	Impeller lock nut and washer	Stainless steel		Carbon graphite resin impregnated
29	Impeller key	Stainless steel		2. Stationary ring
30	Fill and drain plugs	Stainless steel		SiC, silicon carbide, sintered press. less
31				3. Secondary seal
32				Ethylene propylene rubber (EPDM)
33				4. Springs
34				CrNiMo - Steel
35				5. Others
36				EPDM - WRAS
37				Gaskets of the pump
38				Ethylene propylene rubber (EPDM)
39				
40				
41				

Motor data				Coupling			
42	Manufacturer	Lowara		Manufacturer	Flender		
43	Specific design	IE3 3ph Surface Motor - Premium Efficiency		Series	Standard Coupling - N-EUPEX - Type B		
44	Type	PLM 112 B3 4 kW		Shaft diameter	Pump 24 mm	Motor 28 mm	
45	Rated power	4 kW	Rated current	7.62 A	Frame size	68	
46	Nominal speed	2885 rpm	Rated voltage	400 V	Spacer length	mm	3
47	Frame size	112	Service factor	1	Weight	kg 0.5	
48	Weight	kg 29.4	Degree of protection	IP55	Coupling protection	COUPLGUARD 160x112PNTD 0.24 kg	

Base plate			Remarks		
49	Name	BASE 3C 900X390 BLU			
50	Weight	kg	24.0		

NSCF 65-125/40/P25VCC4

Performance curve

Company name
Contact
Phone number
e-mail address

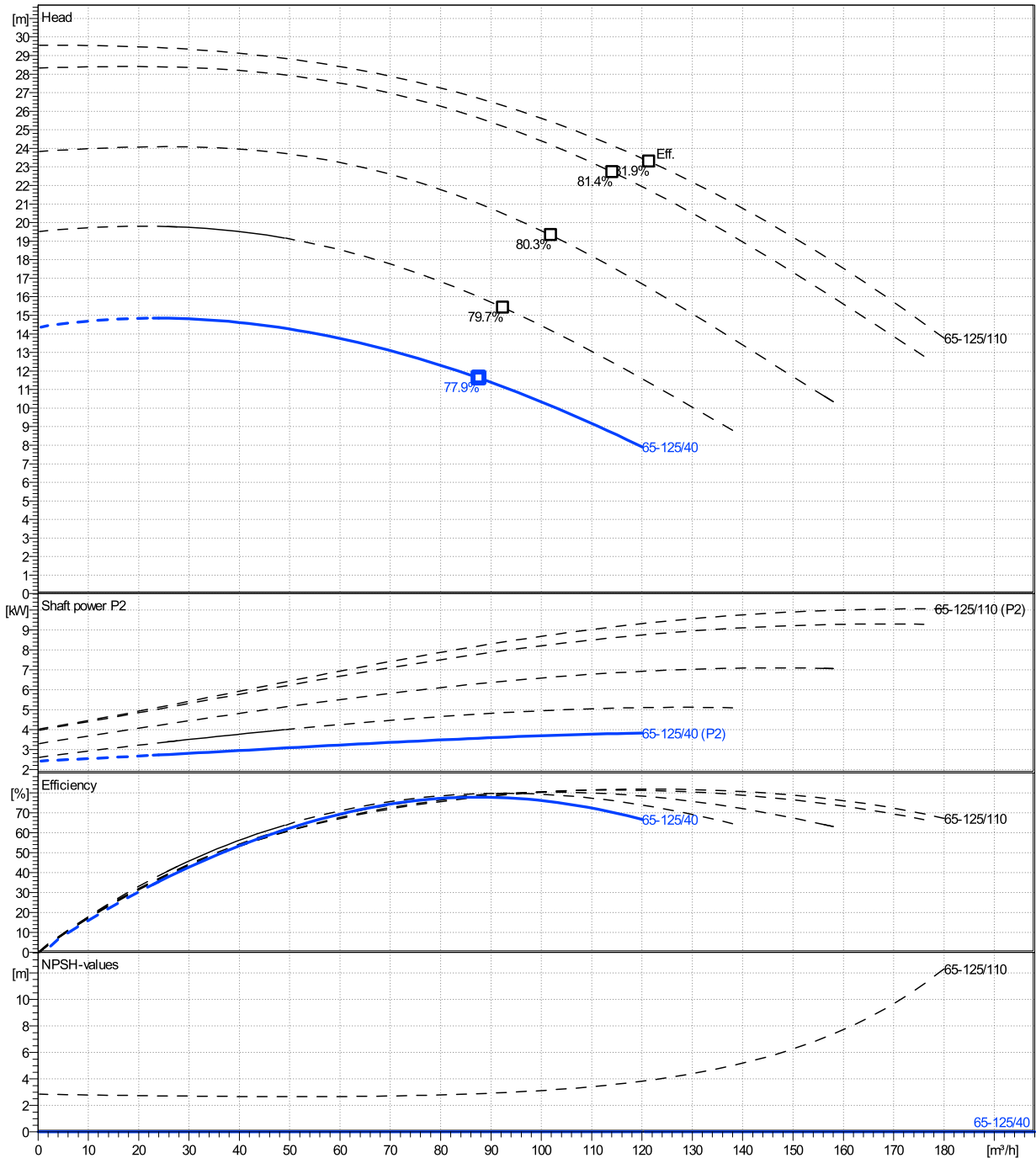
	Ø mm	Pump capacity			Pump head		Shaft power P2			Frequency	Hz	50
		Operating range Min. m³/h	Max. m³/h	η Max. m³/h	H(Q=0) m	η Max. m	P2(Q=0) kW	Max. kW	η Max. kW	Operating speed	rpm	2900
actual	113	24	120	87.6	14.4	11.6		3.83	3.57	Nominal flow	m³/h	0
Min.	0	/	/	87.6	14.4	11.6		/	3.57	Nominal head	m	0
Max.	148	/	/	121	29.5	23.3		/	9.36	Inlet pressure	kPa	0
										Static head	m	0

Power datas referred to:

hydr. Performance acceptance acc. To EN ISO 9906 Class Grade 3B

Water, pure [100%] ; 4°C; 1000kg/m³; 1.57mm²/s

MEI: >=0,4



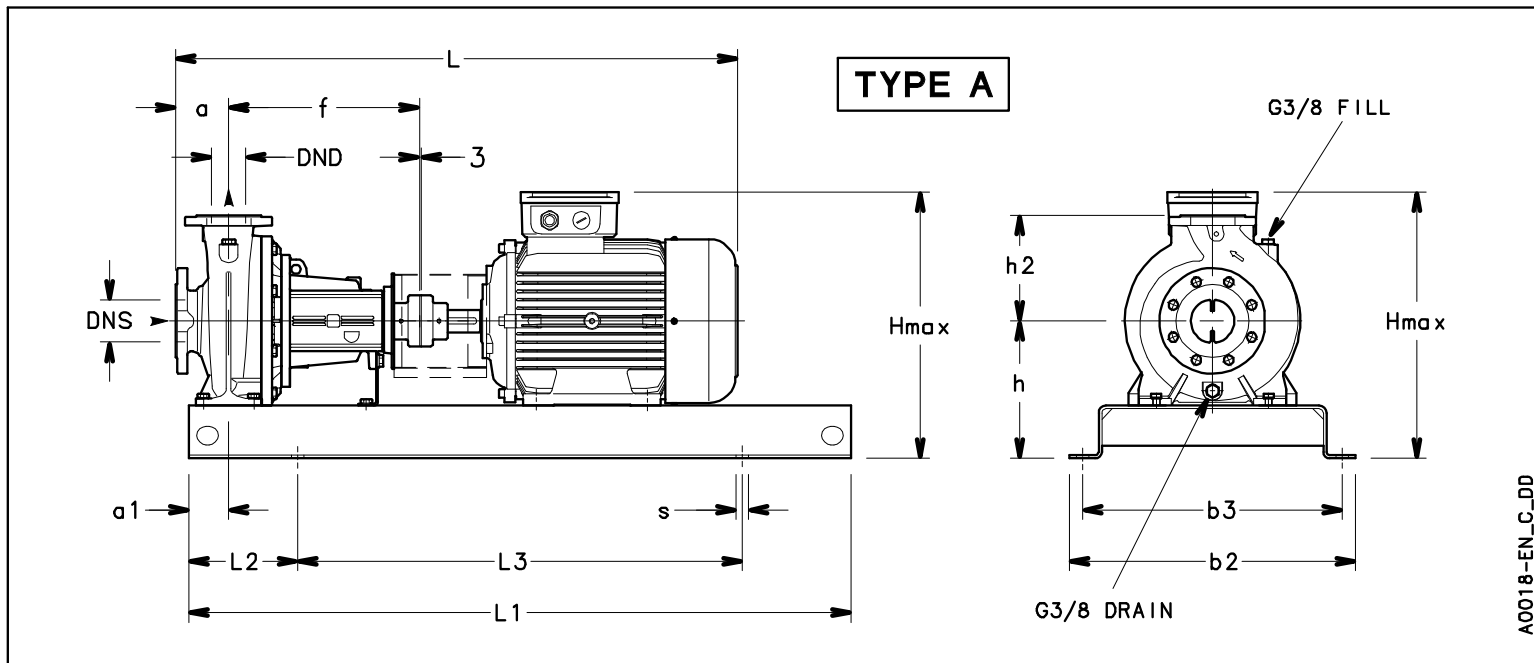
NSCF 65-125/40/P25VCC4

Dimensions

Company name
Contact
Phone number
e-mail address

Frame mounted
[F] = 2 poles motor unit with standard coupling
PLM 112 B3 4 kW

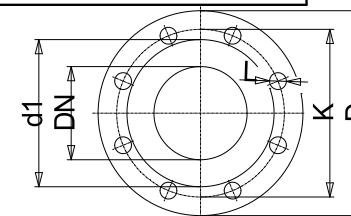
Electrical and dimensional data refer to IE3 motor



Dimensions		[mm]	
a	100		
a1	60		
AD	168		
b2	390		
b3	350		
DND	65		
DNS	80		
f	360		
Guard	113		
h	260		
h2	180		
Hmax	440		
L	845		
L1	900		
L2	150		
L3	600		
s	4xØ19		
Type	A		
Volumen	0.145		
x	3		

Weight	
Total weight	99.18 kg

Connections			
Suction nozzle		Discharge nozzle	
DN 80		DN 65	
PN 16		PN 16	
EN1092-2		EN1092-2	
C	22	C	20
D	200	D	185
df	132	df	118
DN	80	DN	65
K	160	K	145
L	8 x 19	L	4 x 19



Dimensions and weight without obligation

Project	Xylect-20101351	Created by		Last update	12/15/2024
Block	NSCF 65-125/110/P25VCC4	Created on	12/15/2024		