

# NSCF 65-160/22/P45RCC4

## Technical data

Company name  
Contact  
Phone number  
e-mail address

Operating data			
1	Pumpe type	Single head pump	Fluid Water, pure
2	No. of pumps	1	Operating temperature t A °C 4
3	Nominal flow	m <sup>3</sup> /h 0	Max / Min Operating Temperature mech. Seal °C 120 / -25
4	Nominal head	m 0	pH-value at t A 7
5	Static head	m 0	Density at t A kg/m <sup>3</sup> 1000
6	Inlet pressure	kPa 0	Kin. viscosity at t A mm <sup>2</sup> /s 1.569
7	Environmental temperature	°C 20	Vapor pressure at t A kPa 100
8	Available system NPSH	m 0	Altitude 0

Pump data			
9	Lubrication	Standard, Grease lubrication [Std]	
10	Execution	[F] = 4 poles motor unit with standard cuopling	
11	Design	Horizontal	
12	Operating speed	1450 rpm	Stages 1
13	Suction nozzle	DN 80 / PN 16 / EN1092-2	Impeller Ø
14	Discharge nozzle	DN 65 / PN 16 / EN1092-2	
15	Max. casing pressure	kPa	Flow
16	Max. working pressure	kPa 107.2	
17	Impeller type	Radial impeller	
18	Head H(Q=0)	m 11	Head
19	Max. shaft power	kW 2	
20	Pump weight	kg 60	Shaft power kW
21	Total weight	kg 129.5	Efficiency %
			NPSH 3% m

Materials			
22		<b>Pump</b>	<b>Shaft Seal</b>
23	Volute Casing	Cast Iron	Single mechanical seal, without shaft sleeve
24	Casing Cover	Cast Iron	eMG12 - Ø28mm BQ7EGG-WA
25	Impeller	Cast Iron	Mechanical seal diameter 28 mm
26	Shaft	Stainless steel	1. Rotating ring Carbon graphite resin impregnated
27	Wear ring	Stainless steel	2. Stationary ring SiC, silicon carbide, sintered press. less
28	Impeller lock nut and washer	Stainless steel	3. Secondary seal Ethylene propylene rubber (EPDM)
29	Impeller key	Stainless steel	4. Springs CrNiMo - Steel
30	Fill and drain plugs	Stainless steel	5. Others EPDM - WRAS
31			Gaskets of the pump Ethylene propylene rubber (EPDM)
32			
33			
34			
35			
36			
37			
38			
39			
40			
41			

Motor data				Coupling			
42	Manufacturer	Lowara		Manufacturer	Flender		
43	Specific design	IE3 3ph Surface Motor - Premium Efficiency		Series	Standard Coupling - N-EUPEX - Type B		
44	Type	PLM 100 B3 2,2 kW		Shaft diameter	Pump 24 mm	Motor 28 mm	
45	Rated power	2.2 kW	Rated current 4.64 A	Frame size	68		
46	Nominal speed	1445 rpm	Rated voltage 400 V	Spacer length	mm 3		
47	Frame size	100	Service factor 1	Weight	kg 0.5		
48	Weight	kg 39.8	Degree of protection IP55	Coupling protection	COUPLGUARD 175x102PNTD		0.24 kg

Base plate		Remarks	
49	Name	BASE 4A 1000X450 BLU	
50	Weight	kg 28.9	

# NSCF 65-160/22/P45RCC4

## Performance curve

Company name  
Contact  
Phone number  
e-mail address

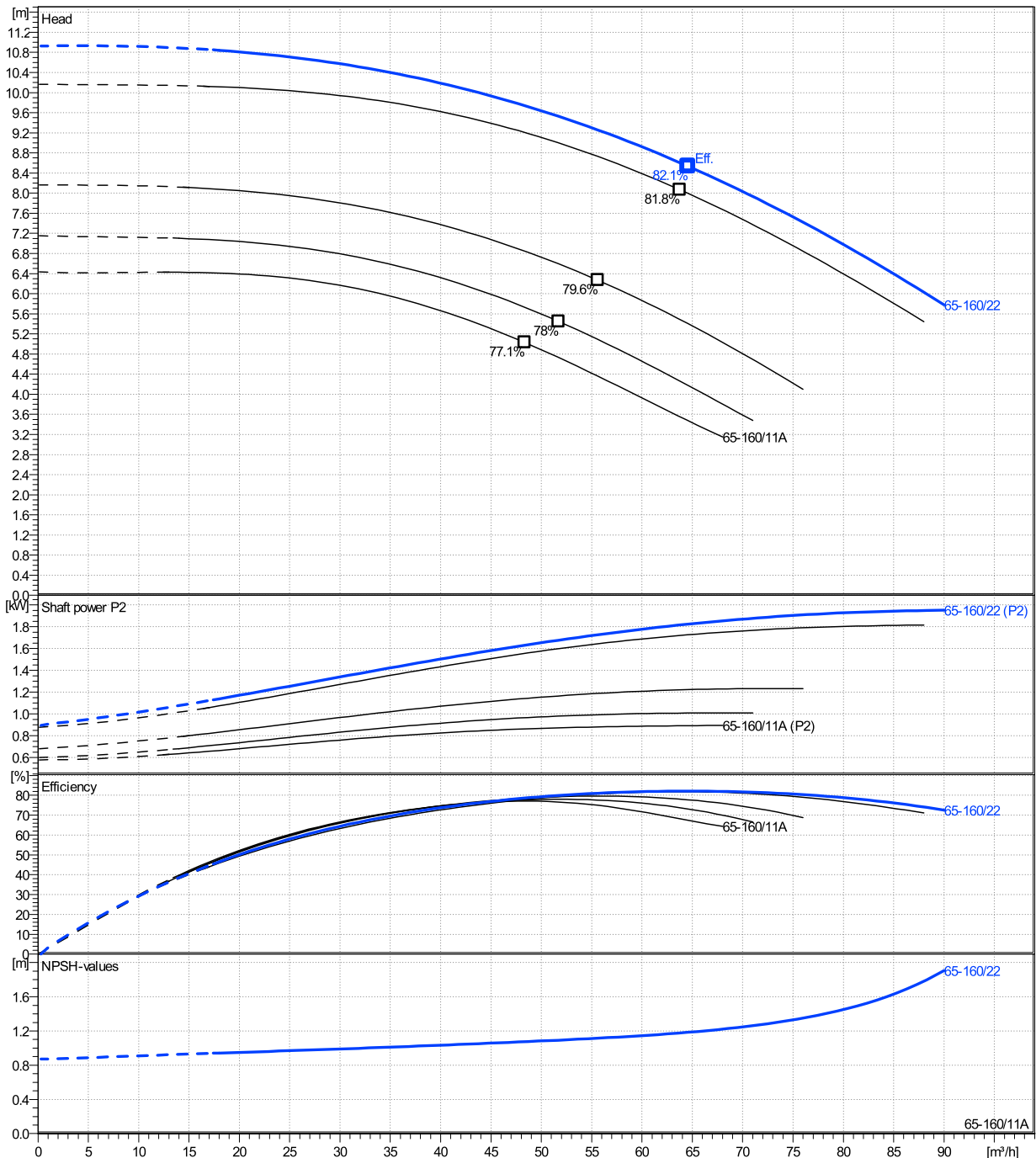
	Ø mm	Pump capacity			Pump head		Shaft power P2			Frequency		Hz	50
		Operating range Min. m³/h	Max. m³/h	η Max. m³/h	H(Q=0) m	η Max. m	P2(Q=0) kW	Max. kW	η Max. kW	Operating speed rpm	1450		
actual	180	18	90	64.6	10.9	8.53	1.95	1.82	82.1%	81.8%	Nominal flow	m³/h	0
Min.	0	/	/	48.4	6.43	5.03	/	0.863			Nominal head	m	0
Max.	180	/	/	64.6	10.9	8.53	/	1.82			Inlet pressure	kPa	0
											Static head	m	0

**Power datas referred to:**

hydr. Performance acceptance acc. To EN ISO 9906 Class Grade 3B

Water, pure [100%] ; 4°C; 1000kg/m³; 1.57mm²/s

MEI: >=0,4



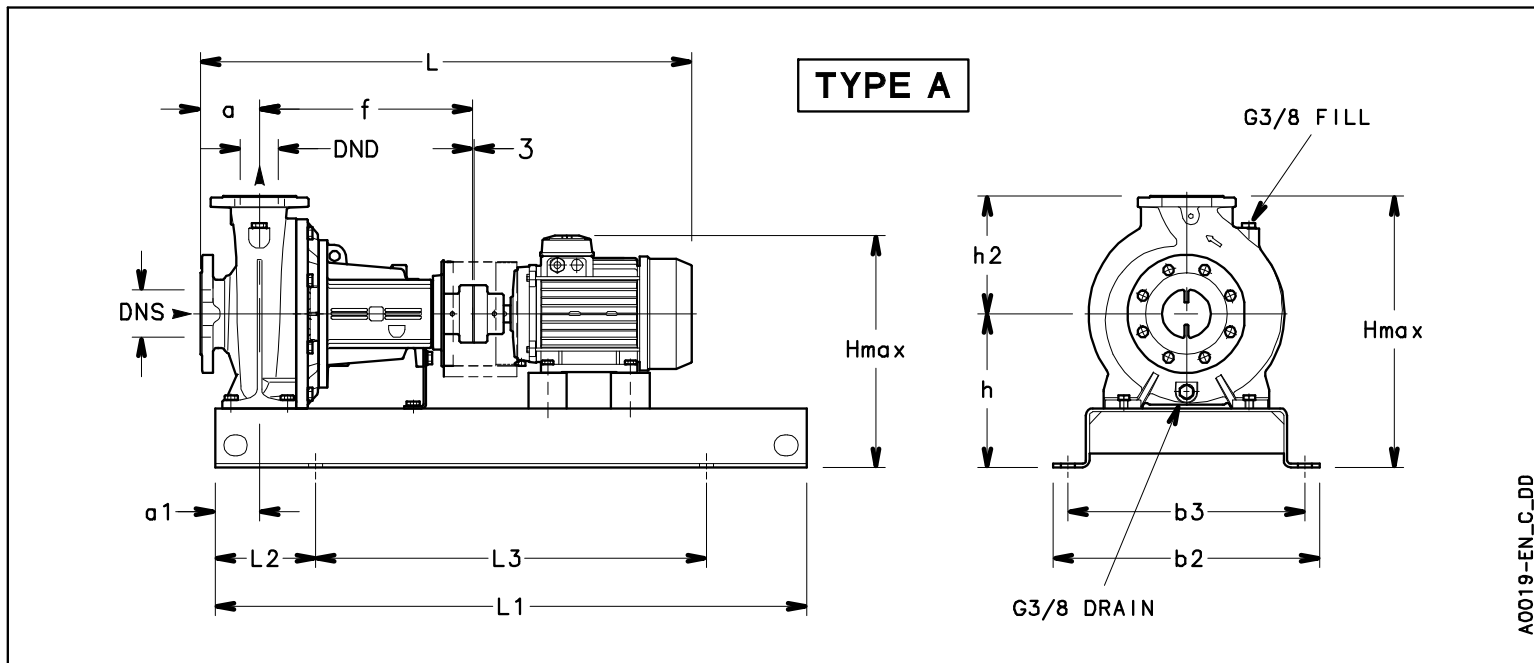
**NSCF 65-160/22/P45RCC4**

**Dimensions**

Company name  
Contact  
Phone number  
e-mail address

Frame mounted  
[F] = 4 poles motor unit with standard coupling  
PLM 100 B3 2,2 kW

Electrical and dimensional data refer to IE3 motor



**Dimensions** [ mm ]

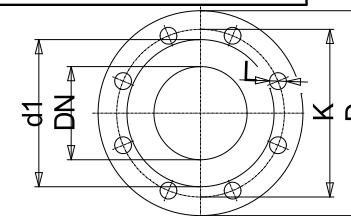
a	100
a1	75
AD	164
b2	450
b3	400
DND	65
DNS	80
f	360
Guard	113
h	260
h2	200
Hmax	460
L	888
L1	1000
L2	170
L3	660
s	4xØ24
Type	A
Volumen	0.18382
x	3

**Weight**

Total weight	129.48 kg
--------------	-----------

**Connections**

Suction nozzle		Discharge nozzle	
DN 80		DN 65	
PN 16		PN 16	
EN1092-2		EN1092-2	
C	22	C	20
D	200	D	185
df	132	df	118
DN	80	DN	65
K	160	K	145
L	8 x 19	L	4 x 19



Value C, D may vary from Standard

**Dimensions and weight without obligation**

Project	Xylect-20100489	Created by		Last update	12/14/2024
Block	NSCF 65-160/185/P25VCC4	Created on	12/14/2024		