

# NSCF 65-200/220/L25VCC4

## Technical data

Company name  
Contact  
Phone number  
e-mail address

Operating data			
1	Pumpe type	Single head pump	Fluid Water, pure
2	No. of pumps	1	Operating temperature t A °C 4
3	Nominal flow	m <sup>3</sup> /h 0	Max / Min Operating Temperature mech. Seal °C 120 / -25
4	Nominal head	m 0	pH-value at t A 7
5	Static head	m 0	Density at t A kg/m <sup>3</sup> 1000
6	Inlet pressure	kPa 0	Kin. viscosity at t A mm <sup>2</sup> /s 1.569
7	Environmental temperature	°C 20	Vapor pressure at t A kPa 100
8	Available system NPSH	m 0	Altitude 0

Pump data			
9	Lubrication	Standard, Grease lubrication [Std]	
10	Execution	[F] = 2 poles motor unit with standard cuopling	
11	Design	Horizontal	
12	Operating speed	2900 rpm	Stages 1
13	Suction nozzle	DN 80 / PN 16 / EN1092-2	Impeller Ø
14	Discharge nozzle	DN 65 / PN 16 / EN1092-2	
15	Max. casing pressure	kPa	Flow
16	Max. working pressure	kPa 548.8	
17	Impeller type	Radial impeller	
18	Head H(Q=0)	m 56	Head
19	Max. shaft power	kW 20.6	
20	Pump weight	kg 63	Shaft power kW
21	Total weight	kg 236.4	
			Efficiency %
			NPSH 3% m

Materials			
22		<b>Pump</b>	<b>Shaft Seal</b>
23	Volute Casing	Cast Iron	Single mechanical seal, without shaft sleeve
24	Casing Cover	Cast Iron	eMG12 - Ø28mm BQ7EGG-WA
25	Impeller	Cast Iron	Mechanical seal diameter 28 mm
26	Shaft	Stainless steel	1. Rotating ring Carbon graphite resin impregnated
27	Wear ring	Stainless steel	2. Stationary ring SiC, silicon carbide, sintered press. less
28	Impeller lock nut and washer	Stainless steel	3. Secondary seal Ethylene propylene rubber (EPDM)
29	Impeller key	Stainless steel	4. Springs CrNiMo - Steel
30	Fill and drain plugs	Stainless steel	5. Others EPDM - WRAS
31			Gaskets of the pump Ethylene propylene rubber (EPDM)
32			
33			
34			
35			
36			
37			
38			
39			
40			
41			

Motor data				Coupling			
42	Manufacturer	Lowara		Manufacturer	Flender		
43	Specific design	IE3 3ph Surface Motor - Premium Efficiency		Series	Standard Coupling - N-EUPEX - Type B		
44	Type	3MAS 180 M B3 22 kW		Shaft diameter	Pump 24 mm	Motor 48 mm	
45	Rated power	22 kW	Rated current 37.9 A	Frame size	110		
46	Nominal speed	2960 rpm	Rated voltage 400 V	Spacer length	mm 3		
47	Frame size	180 M	Service factor 1	Weight	kg 3.3		
48	Weight	kg 127.3	Degree of protection IP55	Coupling protection	COUPLGUARD 175x152PNTD		0.33 kg

Base plate		Remarks	
49	Name	BASE 6C 1250X540 BLU	
50	Weight	kg 42.5	

# NSCF 65-200/220/L25VCC4

## Performance curve

Company name  
Contact  
Phone number  
e-mail address

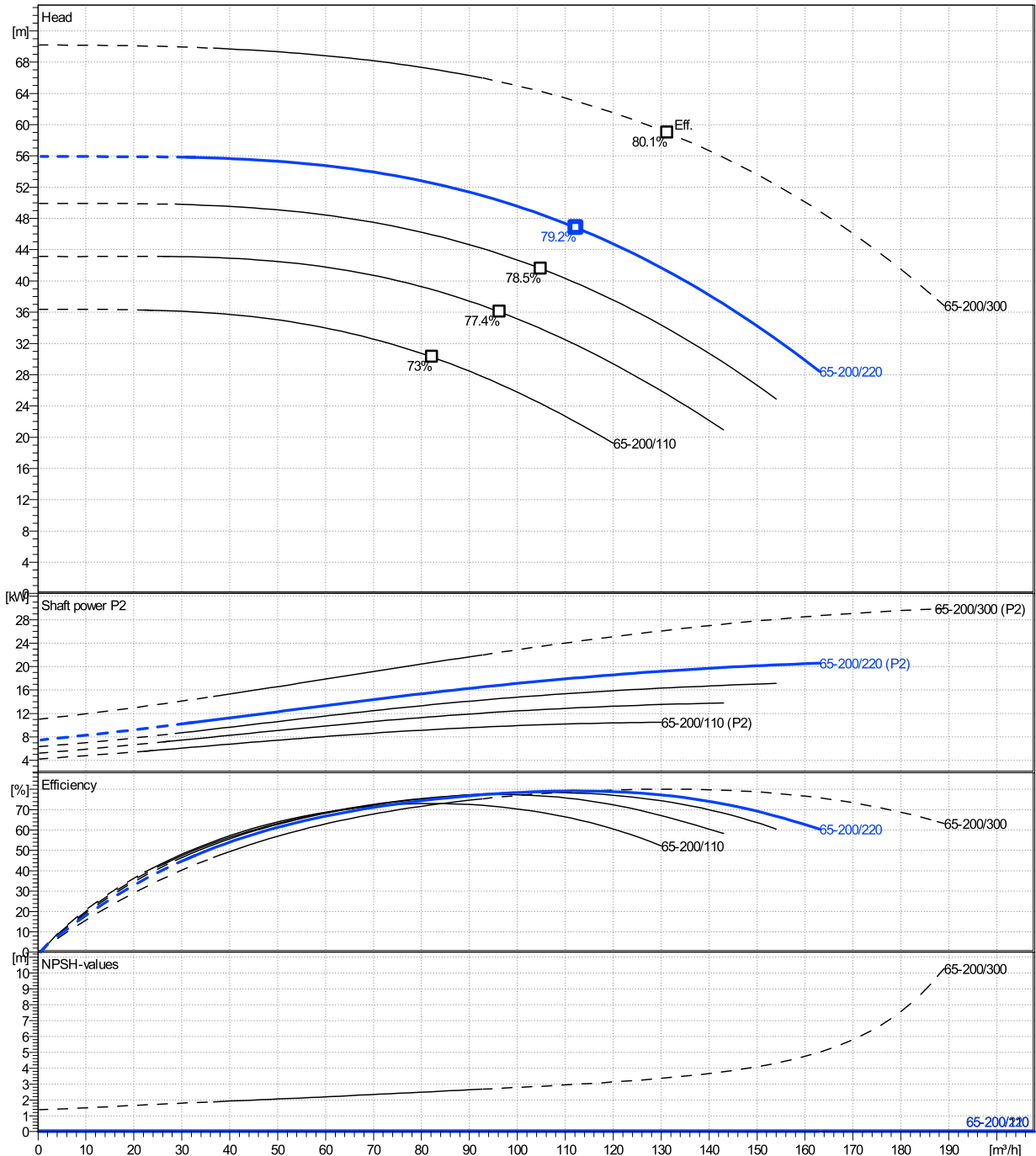
	Ø mm	Pump capacity			Pump head		Shaft power P2			Frequency		Hz	50
		Operating range Min. m³/h	Max. m³/h	η Max. m³/h	H(Q=0) m	η Max. m	P2(Q=0) kW	Max. kW	η Max. kW	Operating speed rpm	2900		
actual	199	32.7	163	112	55.9	46.8		20.6	18.1	Nominal flow	m³/h	0	
Min.	0	/	/	82.2	36.4	30.3		/	9.25	Nominal head	m	0	
Max.	220	/	/	131	70.2	59		/	26.2	Inlet pressure	kPa	0	
										Static head	m	0	

**Power datas referred to:**

Water, pure [100%] ; 4°C; 1000kg/m³; 1.57mm²/s

**hydr. Performance acceptance acc. To EN ISO 9906 Class Grade 3B**

MEI: >=0,4



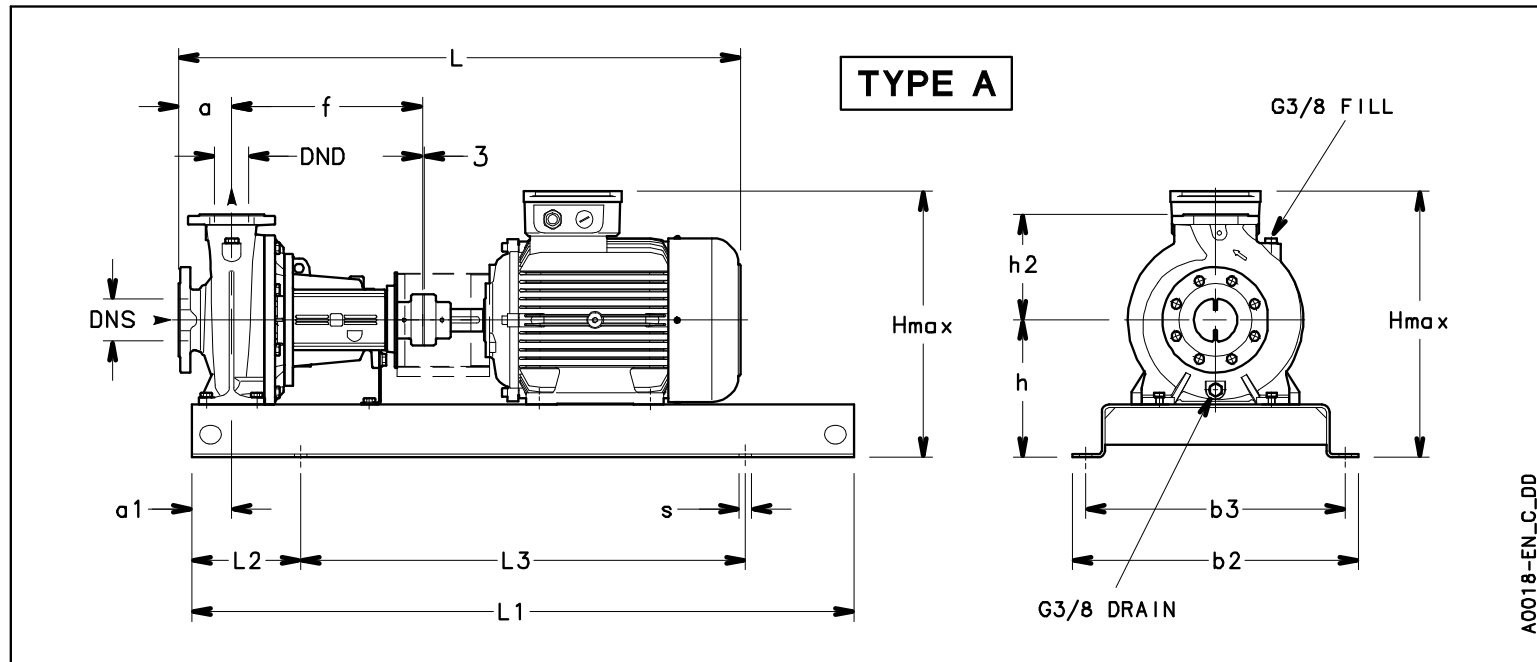
# NSCF 65-200/220/L25VCC4

## Dimensions

Company name  
Contact  
Phone number  
e-mail address

Frame mounted  
[F] = 2 poles motor unit with standard coupling  
3MAS 180 M B3 22 kW

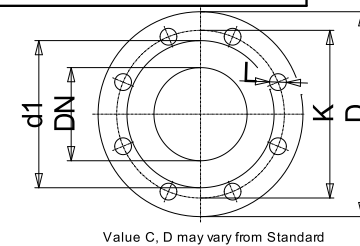
Electrical and dimensional data refer to IE3 motor



Dimensions		[ mm ]
a	100	
a1	75	
AD	264	
b2	540	
b3	490	
DND	65	
DNS	80	
f	360	
Guard	163	
h	280	
h2	225	
Hmax	544	
L	1164	
L1	1250	
L2	205	
L3	840	
s	4xØ24	
Type	A	
Volumen	0.34194	
x	3	

Weight	
Total weight	236.43 kg

Connections			
Suction nozzle		Discharge nozzle	
DN 80		DN 65	
PN 16		PN 16	
EN1092-2		EN1092-2	
C	22	C	20
D	200	D	185
df	132	df	118
DN	80	DN	65
K	160	K	145
L	8 x 19	L	4 x 19



### Dimensions and weight without obligation

Project	Xylect-20099624	Created by		Last update	12/13/2024
Block	NSCF 65-200/300/L25VCC4	Created on	12/13/2024		