

NSCF 80-160/220/L25VCC4

Technical data

Company name
Contact
Phone number
e-mail address

Operating data			
1	Pumpe type	Single head pump	Fluid Water, pure
2	No. of pumps	1	Operating temperature t A °C 4
3	Nominal flow	m ³ /h 0	Max / Min Operating Temperature mech. Seal °C 120 / -25
4	Nominal head	m 0	pH-value at t A 7
5	Static head	m 0	Density at t A kg/m ³ 1000
6	Inlet pressure	kPa 0	Kin. viscosity at t A mm ² /s 1.569
7	Environmental temperature	°C 20	Vapor pressure at t A kPa 100
8	Available system NPSH	m 0	Altitude 0

Pump data			
9	Lubrication	Standard, Grease lubrication [Std]	
10	Execution	[F] = 2 poles motor unit with standard cuopling	
11	Design	Horizontal	
12	Operating speed	2900 rpm	Stages 1
13	Suction nozzle	DN 100 / PN 16 / EN1092-2	Impeller Ø
14	Discharge nozzle	DN 80 / PN 16 / EN1092-2	
15	Max. casing pressure	kPa	Flow
16	Max. working pressure	kPa 415.3	
17	Impeller type	Radial impeller	
18	Head H(Q=0)	m 42	Head
19	Max. shaft power	kW 21.6	
20	Pump weight	kg 66	Shaft power kW
21	Total weight	kg 239.4	Efficiency %
			NPSH 3% m

Materials			
22		Pump	Shaft Seal
23	Volute Casing	Cast Iron	Single mechanical seal, without shaft sleeve
24	Casing Cover	Cast Iron	eMG12 - Ø28mm BQ7EGG-WA
25	Impeller	Cast Iron	Mechanical seal diameter 28 mm
26	Shaft	Stainless steel	1. Rotating ring Carbon graphite resin impregnated
27	Wear ring	Stainless steel	2. Stationary ring SiC, silicon carbide, sintered press. less
28	Impeller lock nut and washer	Stainless steel	3. Secondary seal Ethylene propylene rubber (EPDM)
29	Impeller key	Stainless steel	4. Springs CrNiMo - Steel
30	Fill and drain plugs	Stainless steel	5. Others EPDM - WRAS
31			Gaskets of the pump Ethylene propylene rubber (EPDM)
32			
33			
34			
35			
36			
37			
38			
39			
40			
41			

Motor data				Coupling			
42	Manufacturer	Lowara		Manufacturer	Flender		
43	Specific design	IE3 3ph Surface Motor - Premium Efficiency		Series	Standard Coupling - N-EUPEX - Type B		
44	Type	3MAS 180 M B3 22 kW		Shaft diameter	Pump 24 mm	Motor 48 mm	
45	Rated power	22 kW	Rated current 37.9 A	Frame size	110		
46	Nominal speed	2960 rpm	Rated voltage 400 V	Spacer length	mm 3		
47	Frame size	180 M	Service factor 1	Weight	kg 3.3		
48	Weight	kg 127.3	Degree of protection IP55	Coupling protection	COUPLGUARD 175x152PNTD		0.33 kg

Base plate		Remarks	
49	Name	BASE 6C 1250X540 BLU	
50	Weight	kg 42.5	

NSCF 80-160/220/L25VCC4

Performance curve

Company name
Contact
Phone number
e-mail address

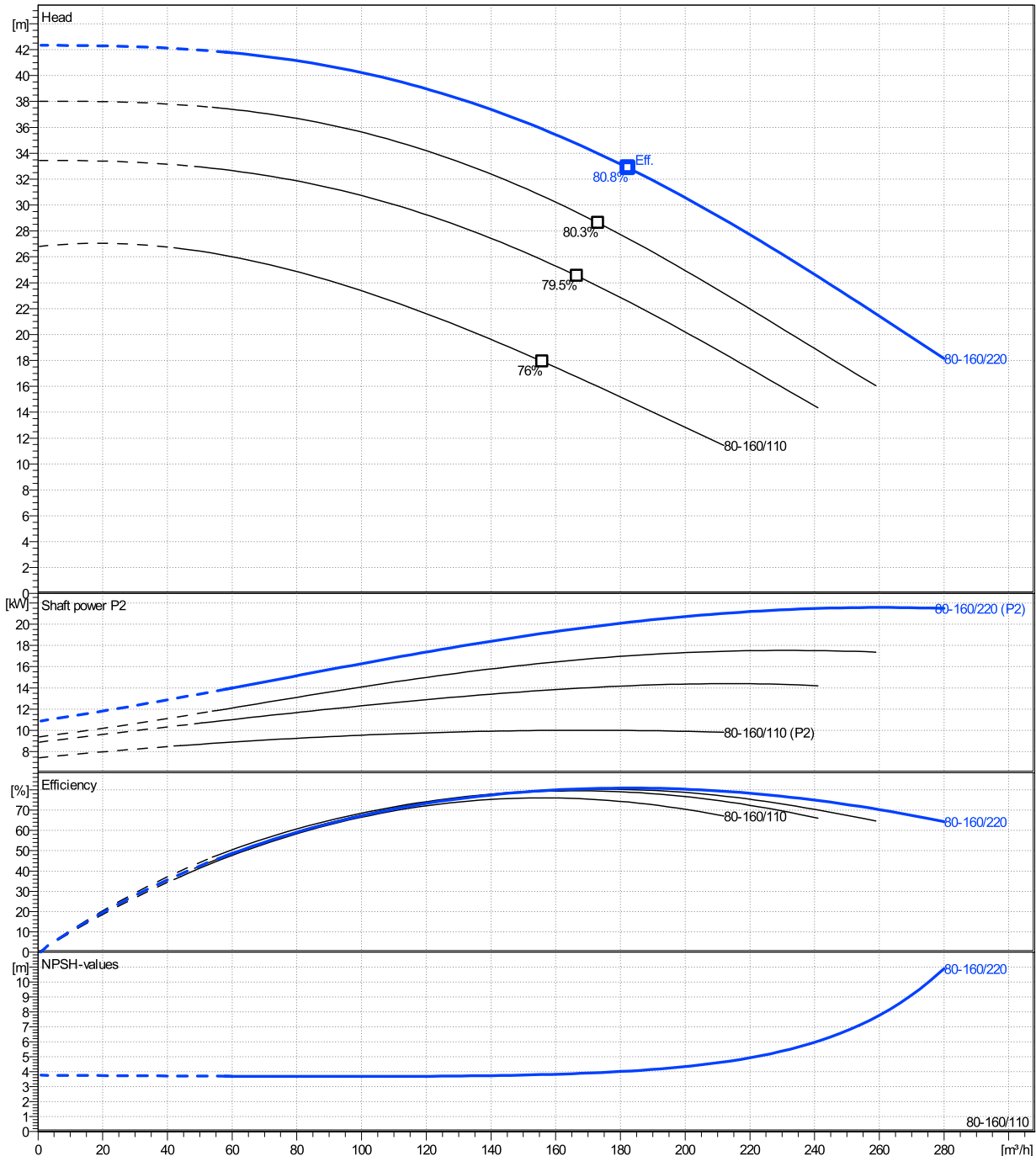
	Ø mm	Pump capacity			Pump head		Shaft power P2			Frequency	Hz	50
		Operating range Min. m³/h	Max. m³/h	η Max. m³/h	H(Q=0) m	η Max. m	P2(Q=0) kW	Max. kW	η Max. kW	Operating speed	rpm	2900
actual	177	60	280	182	42.3	32.9		21.6	20.2	Nominal flow	m³/h	0
Min.	0	/	/	156	26.8	17.9		/	9.99	Nominal head	m	0
Max.	177	/	/	182	42.3	32.9		/	20.2	Inlet pressure	kPa	0
										Static head	m	0

Power datas referred to:

Water, pure [100%] ; 4°C; 1000kg/m³; 1.57mm²/s

hydr. Performance acceptance acc. To EN ISO 9906 Class Grade 3B

MEI: >=0,4



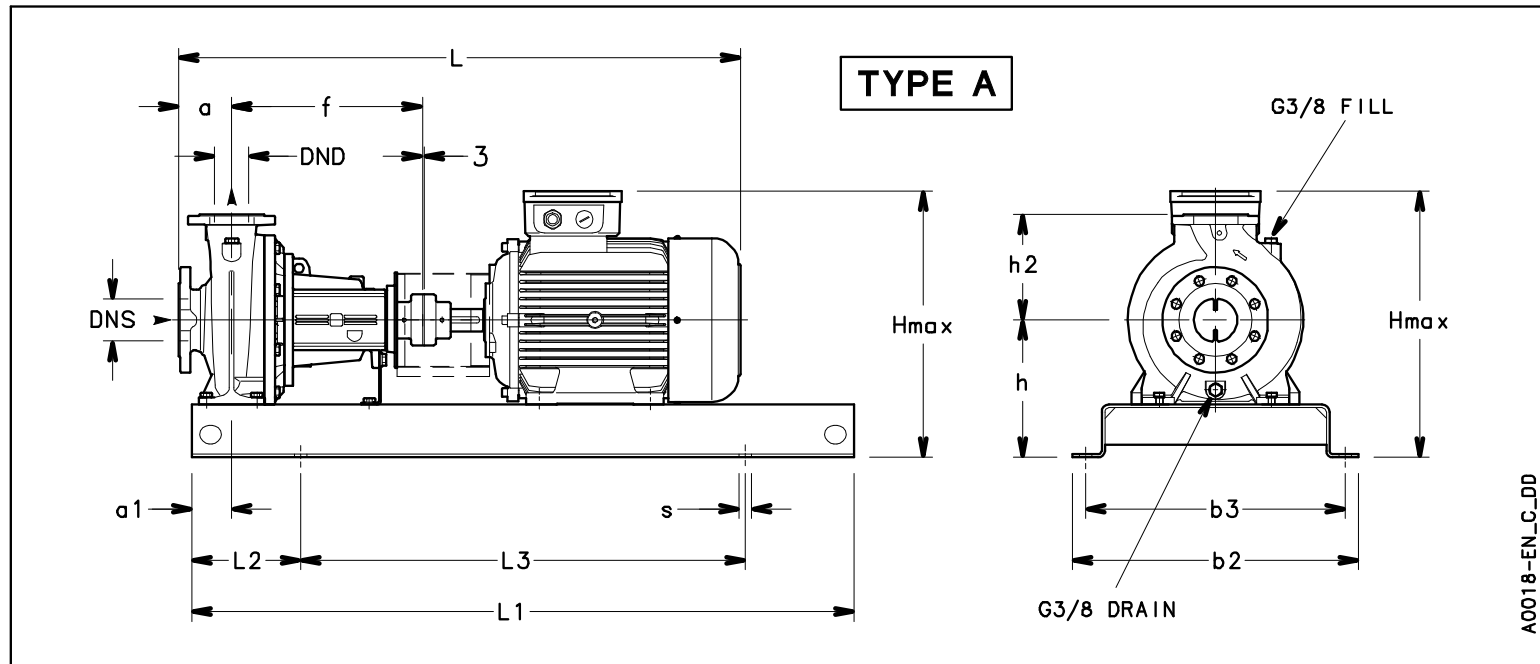
NSCF 80-160/220/L25VCC4

Dimensions

Company name
Contact
Phone number
e-mail address

Frame mounted
[F] = 2 poles motor unit with standard coupling
3MAS 180 M B3 22 kW

Electrical and dimensional data refer to IE3 motor



Dimensions [mm]

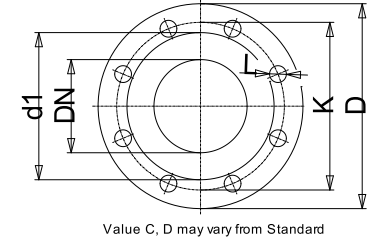
a	125
a1	75
AD	264
b2	540
b3	490
DND	80
DNS	100
f	360
Guard	163
h	280
h2	225
Hmax	544
L	1189
L1	1250
L2	205
L3	840
s	4xØ24
Type	A
Volumen	0.34928
x	3

Weight

Total weight	239.43 kg
--------------	-----------

Connections

Suction nozzle		Discharge nozzle	
DN 100		DN 80	
PN 16		PN 16	
EN1092-2		EN1092-2	
C	24	C	22
D	230	D	200
df	157	df	132
DN	100	DN	80
K	180	K	160
L	8 x 19	L	8 x 19



Dimensions and weight without obligation

Project	Xylect-20101285	Created by		Last update	12/15/2024
Block	NSCF 80-160/220/L25VCC4	Created on	12/15/2024		