

NSCF 80-160/22/P45RCC4

Technical data

Company name
Contact
Phone number
e-mail address

Operating data				
1	Pumpe type	Single head pump	Fluid	Water, pure
2	No. of pumps	1	Operating temperature t A	°C 4
3	Nominal flow	m ³ /h 0	Max / Min Operating Temperature mech. Seal	°C 120 / -25
4	Nominal head	m 0	pH-value at t A	7
5	Static head	m 0	Density at t A	kg/m ³ 1000
6	Inlet pressure	kPa 0	Kin. viscosity at t A	mm ² /s 1.569
7	Environmental temperature	°C 20	Vapor pressure at t A	kPa 100
8	Available system NPSH	m 0	Altitude	0

Pump data				
9	Lubrication	Standard, Grease lubrication [Std]		
10	Execution	[F] = 4 poles motor unit with standard cuopling		
11	Design	Horizontal		
12	Operating speed	1450 rpm	Stages	1
13	Suction nozzle	DN 100 / PN 16 / EN1092-2	Impeller Ø	Max. mm 177
14	Discharge nozzle	DN 80 / PN 16 / EN1092-2		designed mm 168
15	Max. casing pressure	kPa	Flow	Min. mm 144
16	Max. working pressure	kPa 91		Nominal m ³ /h
17	Impeller type	Radial impeller		Max- m ³ /h 129.5
18	Head H(Q=0)	m 9.3	Head	Min- m ³ /h 27.8
19	Max. shaft power	kW 2.1		Nominal m
20	Pump weight	kg 66	at Qmax m 3.8	
21	Total weight	kg 141.7	at Qmin m 9.2	
			Shaft power kW	
			Efficiency %	
			NPSH 3% m	

Materials				
22		Pump	Shaft Seal	
23	Volute Casing	Cast Iron	Single mechanical seal, without shaft sleeve	
24	Casing Cover	Cast Iron	eMG12 - Ø28mm	BQ7EGG-WA
25	Impeller	Cast Iron	Mechanical seal diameter	28 mm
26	Shaft	Stainless steel	1. Rotating ring	Carbon graphite resin impregnated
27	Wear ring	Stainless steel	2. Stationary ring	SiC, silicon carbide, sintered press. less
28	Impeller lock nut and washer	Stainless steel	3. Secondary seal	Ethylene propylene rubber (EPDM)
29	Impeller key	Stainless steel	4. Springs	CrNiMo - Steel
30	Fill and drain plugs	Stainless steel	5. Others	EPDM - WRAS
31			Gaskets of the pump	Ethylene propylene rubber (EPDM)
32				
33				
34				
35				
36				
37				
38				
39				
40				
41				

Motor data				Coupling			
42	Manufacturer	Lowara		Manufacturer	Flender		
43	Specific design	IE3 3ph Surface Motor - Premium Efficiency		Series	Standard Coupling - N-EUPEX - Type B		
44	Type	PLM 100 B3 2,2 kW		Shaft diameter	Pump 24 mm	Motor 28 mm	
45	Rated power	2.2 kW	Rated current 4.64 A	Frame size	68		
46	Nominal speed	1445 rpm	Rated voltage 400 V	Spacer length	mm 3		
47	Frame size	100	Service factor 1	Weight	kg 0.5		
48	Weight kg	39.8	Degree of protection IP55	Coupling protection	COUPLGUARD 175x102PNTD		0.24 kg

Base plate			Remarks		
49	Name	BASE 5B 1120X490 BLU			
50	Weight	kg 35.1			

NSCF 80-160/22/P45RCC4

Performance curve

Company name
Contact
Phone number
e-mail address

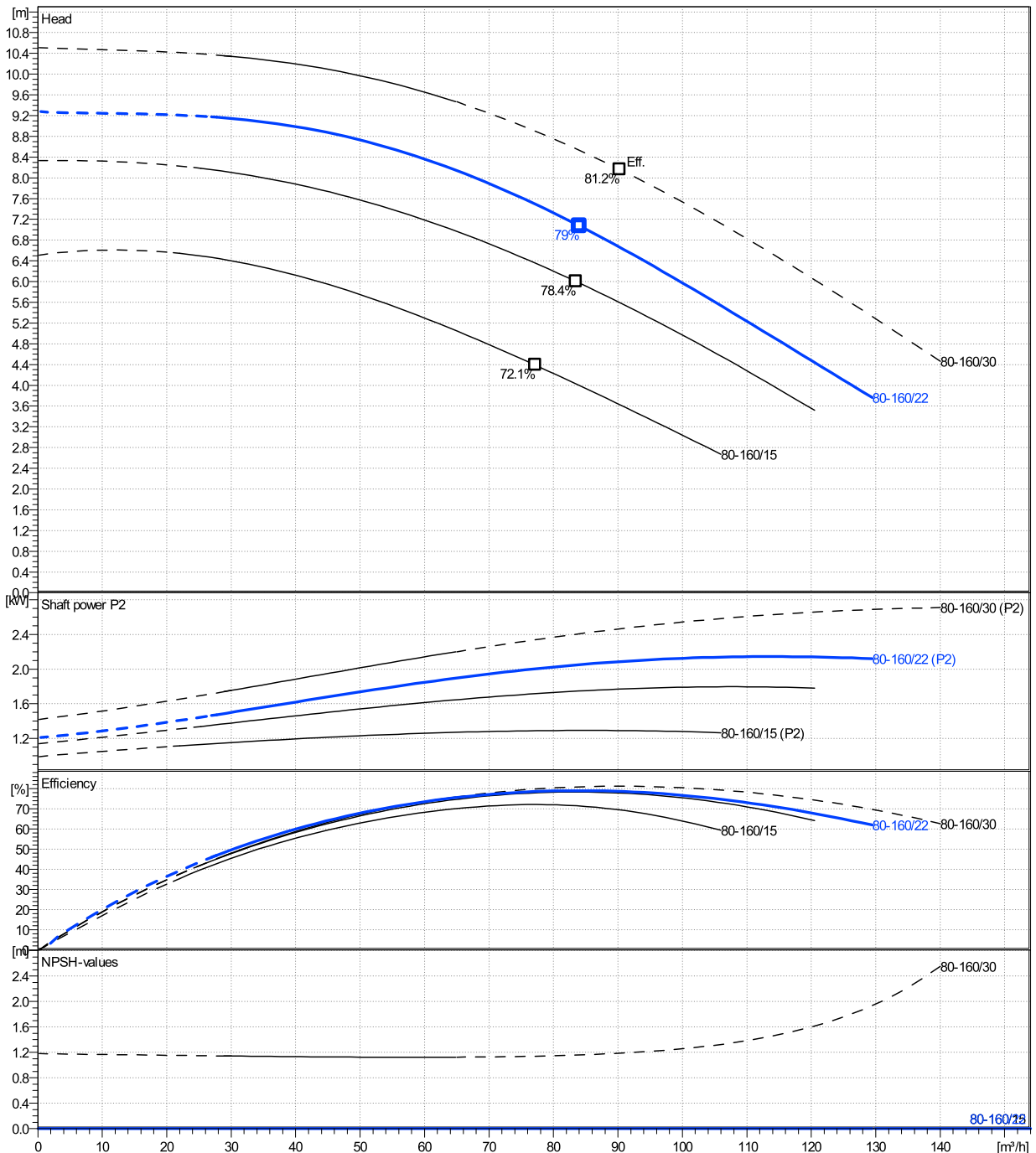
	Ø mm	Pump capacity			Pump head		Shaft power P2			Frequency	Hz	50
		Operating range Min. m³/h	Max. m³/h	η Max. m³/h	H(Q=0) m	η Max. m	P2(Q=0) kW	Max. kW	η Max. kW	Operating speed	rpm	1450
actual	168	27.8	129	84	9.28	7.07		2.14	2.05	Nominal flow	m³/h	0
Min.	0	/	/	77.2	6.51	4.39		/	1.29	Nominal head	m	0
Max.	177	/	/	90.3	10.5	8.16		/	2.47	Inlet pressure	kPa	0
										Static head	m	0

Power datas referred to:

hydr. Performance acceptance acc. To EN ISO 9906 Class Grade 3B

Water, pure [100%] ; 4°C; 1000kg/m³; 1.57mm²/s

MEI: >=0,4



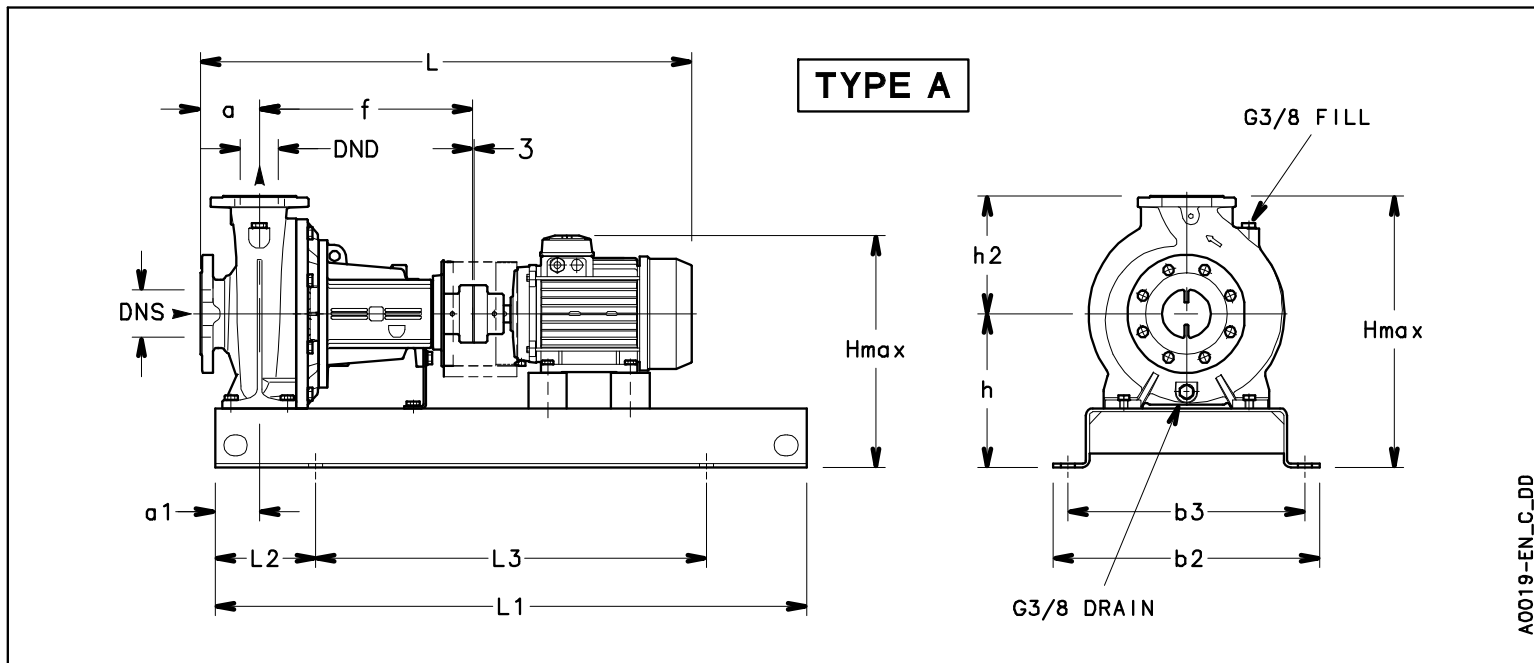
NSCF 80-160/22/P45RCC4

Dimensions

Company name
Contact
Phone number
e-mail address

Frame mounted
[F] = 4 poles motor unit with standard coupling
PLM 100 B3 2,2 kW

Electrical and dimensional data refer to IE3 motor



Dimensions [mm]

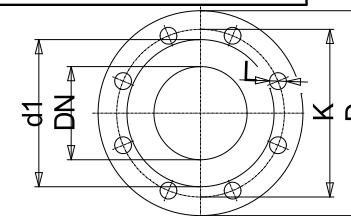
a	125
a1	75
AD	164
b2	490
b3	440
DND	80
DNS	100
f	360
Guard	113
h	280
h2	225
Hmax	505
L	913
L1	1120
L2	190
L3	740
s	4xØ24
Type	A
Volumen	0.22592
x	3

Weight

Total weight	141.68 kg
--------------	-----------

Connections

Suction nozzle		Discharge nozzle	
DN 100		DN 80	
PN 16		PN 16	
EN1092-2		EN1092-2	
C	24	C	22
D	230	D	200
df	157	df	132
DN	100	DN	80
K	180	K	160
L	8 x 19	L	8 x 19



Value C, D may vary from Standard

Dimensions and weight without obligation

Project	Xylect-20101285	Created by		Last update	12/15/2024
Block	NSCF 80-160/220/L25VCC4	Created on	12/15/2024		