

# NSCF 80-250/370/L25VCC4

## Technical data

Company name  
Contact  
Phone number  
e-mail address

Operating data						
1	Pumpe type	Single head pump		Fluid	Water, pure	
2	No. of pumps	1		Operating temperature t A	°C	4
3	Nominal flow	m³/h	0	Max / Min Operating Temperature mech. Seal	°C	120 / -25
4	Nominal head	m	0	pH-value at t A		7
5	Static head	m	0	Density at t A	kg/m³	1000
6	Inlet pressure	kPa	0	Kin. viscosity at t A	mm²/s	1.569
7	Environmental temperature	°C	20	Vapor pressure at t A	kPa	100
8	Available system NPSH	m	0	Altitude		0

Pump data										
9	Lubrication	Standard, Grease lubrication [Std]								
10	Execution	[F] = 2 poles motor unit with standard cuopling								
11	Design	Horizontal		Impeller Ø	Max.	mm	259			
12	Operating speed	2900 rpm	Stages		1	designed	mm	214		
13	Suction nozzle	DN 100	/		PN 16	/	EN 1092-2	Min.	mm	214
14	Discharge nozzle	DN 80	/	PN 16	/	EN 1092-2	Flow	Nominal	m³/h	
15	Max. casing pressure	kPa						Max-	m³/h	225.3
16	Max. working pressure	kPa	637.2				Min-	m³/h	50.3	
17	Impeller type	Radial impeller		Head	Nominal	m				
18	Head H(Q=0)	m	65		at Qmax	m	45.9			
19	Max. shaft power	kW	35.8		at Qmin	m	66.1			
20	Pump weight	kg	86		Shaft power	kW				
21	Total weight	kg	362.6		Efficiency	%				
					NPSH 3%	m				

Materials						
22		Pump			Shaft Seal	
23	Volute Casing	Cast Iron			Single mechanical seal, without shaft sleeve	
24	Casing Cover	Cast Iron			eMG12 - Ø38mm	BQ7EGG-WA
25	Impeller	Cast Iron			Mechanical seal diameter	38 mm
26	Shaft	Stainless steel			1. Rotating ring	Carbon graphite resin impregnated
27	Wear ring	Stainless steel			2. Stationary ring	SiC, silicon carbide, sintered press.less
28	Impeller lock nut and washer	Stainless steel			3. Secondary seal	Ethylene propylene rubber (EPDM)
29	Impeller key	Stainless steel			4. Springs	CrNiMo - Steel
30	Fill and drain plugs	Stainless steel			5. Others	EPDM - WRAS
31					Gaskets of the pump	Ethylene propylene rubber (EPDM)
32						
33						
34						
35						
36						
37						
38						
39						
40						
41						

Motor data				Electrical and dimensional data refer to IE3 motor				Coupling			
42	Manufacturer	Lowara				Manufacturer	Flender				
43	Specific design	IE3 3ph Surface Motor - Premium Efficiency				Series	Standard Coupling - N-EUPEX - Type B				
44	Type	3MAS 200 L B3 37 kW				Shaft diameter	Pump	32 mm	Motor	55 mm	
45	Rated power	37 kW	Rated current	63.8 A		Frame size	125				
46	Nominal speed	2965 rpm	Rated voltage	400 V		Spacer length	mm	3			
47	Frame size	200 L	Service factor	1		Weight	kg	5.2			
48	Weight	kg	216.1	Degree of protection	IP55	Coupling protection	COUPLGUARD 190KS95-16 4571			0.7 kg	

Base plate				Remarks			
49	Name	BASE 7C 1400X610 BLU					
50	Weight	kg	54.6				

# NSCF 80-250/370/L25VCC4

## Performance curve

Company name  
Contact  
Phone number  
e-mail address

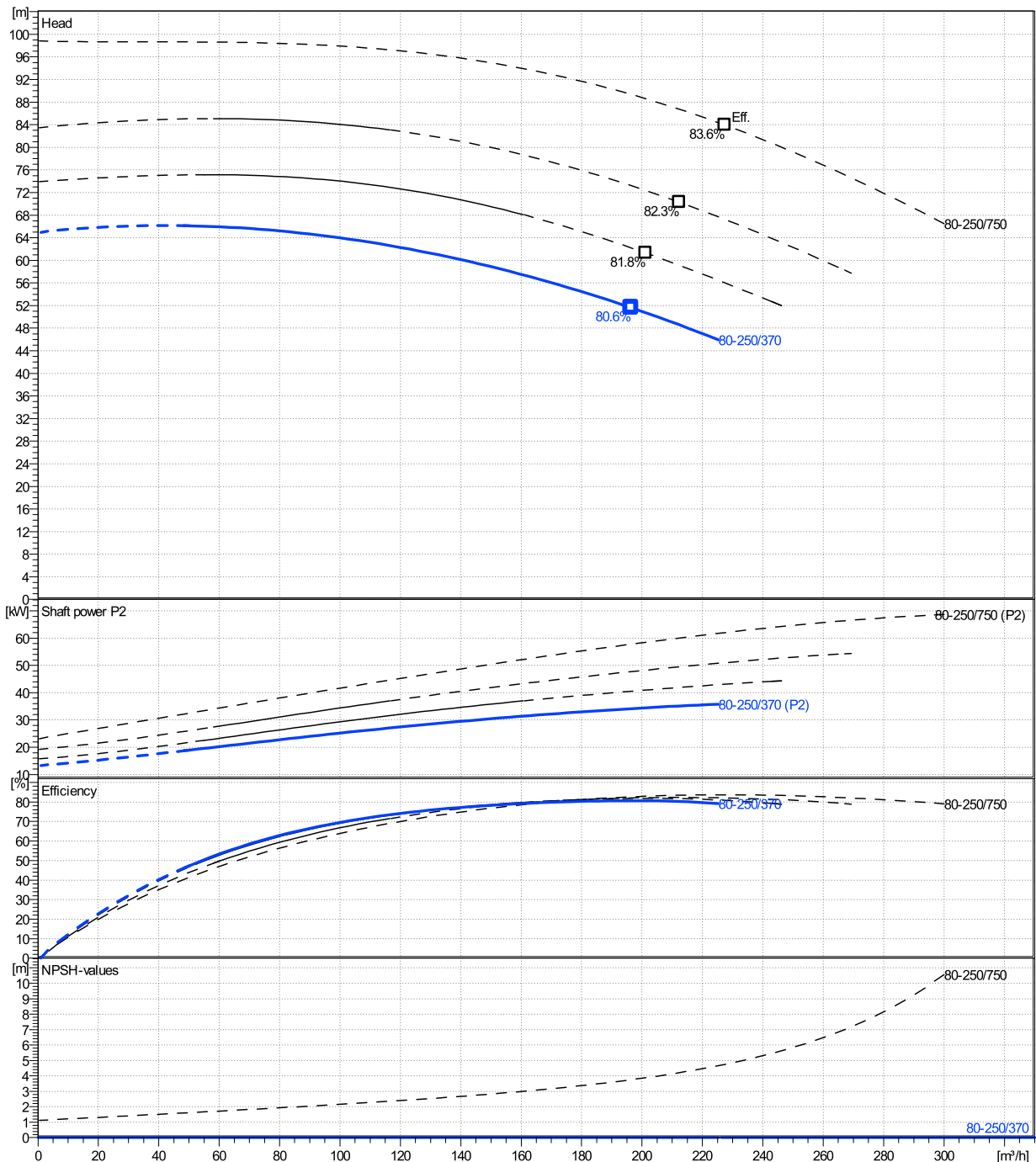
	Ø mm	Pump capacity			Pump head		Shaft power P2			Frequency	Hz	50
		Operating range Min. m³/h	Max. m³/h	η Max. m³/h	H(Q=0) m	η Max. m	P2(Q=0) kW	Max. kW	η Max. kW	Operating speed	rpm	2900
actual	214	50.3	225	196	65	51.6		35.8	34.1	Nominal flow	m³/h	0
Min.	0	/	/	196	65	51.6		/	34.1	Nominal head	m	0
Max.	259	/	/	227	98.8	83.9		/	62.1	Inlet pressure	kPa	0
										Static head	m	0

**Power datas referred to:**

hydr. Performance acceptance acc. To EN ISO 9906 Class Grade 3B

Water, pure [100%] ; 4°C; 1000kg/m³; 1.57mm²/s

MEI: >=0,4



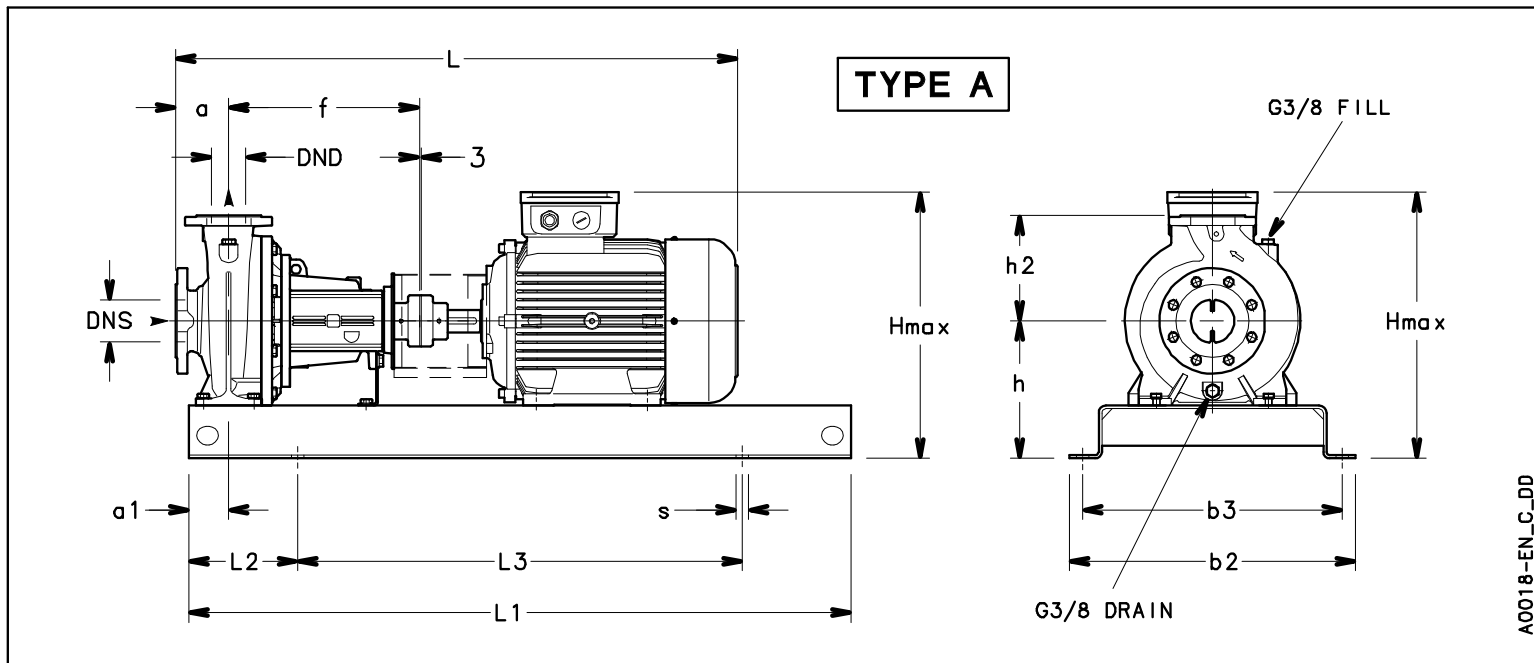
# NSCF 80-250/370/L25VCC4

## Dimensions

Company name  
Contact  
Phone number  
e-mail address

Frame mounted  
[F] = 2 poles motor unit with standard coupling  
3MAS 200 L B3 37 kW

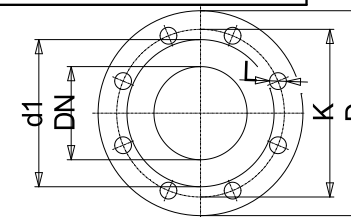
Electrical and dimensional data refer to IE3 motor



Dimensions		[ mm ]
a	125	
a1	90	
AD	300	
b2	610	
b3	550	
DND	80	
DNS	100	
f	470	
Guard	193	
h	310	
h2	280	
Hmax	610	
L	1379	
L1	1400	
L2	230	
L3	940	
s	4xØ28	
Type	A	
Volumen	0.51313	
x	3	

Weight	
Total weight	362.6 kg

Connections			
Suction nozzle		Discharge nozzle	
DN 100		DN 80	
PN 16		PN 16	
EN1092-2		EN1092-2	
C	24	C	22
D	230	D	200
df	157	df	132
DN	100	DN	80
K	180	K	160
L	8 x 19	L	8 x 19



### Dimensions and weight without obligation

Project	Xylect-20101351	Created by		Last update	12/15/2024
Block	NSCF 80-250/750/L25VCC4 E4	Created on	12/15/2024		