

NSCF 80-400/370/L45VCC4

Technical data

Company name
Contact
Phone number
e-mail address

| Operating data | | | | |
|----------------|---------------------------|------------------|--|--------------|
| 1 | Pumpe type | Single head pump | Fluid | Water, pure |
| 2 | No. of pumps | 1 | Operating temperature t A | °C 4 |
| 3 | Nominal flow | m³/h 0 | Max / Min Operating Temperature mech. Seal | °C 120 / -25 |
| 4 | Nominal head | m 0 | pH-value at t A | 7 |
| 5 | Static head | m 0 | Density at t A | kg/m³ 1000 |
| 6 | Inlet pressure | kPa 0 | Kin. viscosity at t A | mm²/s 1.569 |
| 7 | Environmental temperature | °C 20 | Vapor pressure at t A | kPa 100 |
| 8 | Available system NPSH | m 0 | Altitude | 0 |

| Pump data | | | | | |
|-----------|-----------------------|------------------------------------|-------------|---------------|------------|
| 9 | Lubrication | Standard, Grease lubrication [Std] | | | |
| 10 | Execution | Standard coupling | | | |
| 11 | Design | Horizontal | | | |
| 12 | Operating speed | 1480 rpm | Stages | 1 | |
| 13 | Suction nozzle | DN100 / PN10/16 / EN1092-2 | Impeller Ø | Max. designed | mm 418 |
| 14 | Discharge nozzle | DN80 / PN10/16 / EN1092-2 | | Min. | mm 338 |
| 15 | Max. casing pressure | kPa | Flow | Nominal | m³/h |
| 16 | Max. working pressure | kPa 614 | | Max- | m³/h 221.5 |
| 17 | Impeller type | Radial impeller | | Min- | m³/h 22.1 |
| 18 | Head H(Q=0) | m 63 | Head | Nominal | m |
| 19 | Max. shaft power | kW 36.8 | | at Qmax | m 36.6 |
| 20 | Pump weight | kg 154 | Shaft power | at Qmin | m 62 |
| 21 | Total weight | kg 551.4 | | Efficiency | % |
| | | | NPSH 3% | m | |

| Materials | | | | |
|-----------|------------------------------|---|-------------------|---|
| 22 | | Pump | Shaft Seal | |
| 23 | Volute Casing | Cast Iron, EN 1561 - GJL-250, ASTM Class 35 | | Single mechanical seal, without shaft sleeve |
| 24 | Impeller | Cast Iron, EN 1561 - GJL-200, ASTM Class 30 | | eMG12 - Ø48mm BQ7EGG-WA |
| 25 | Casing Cover | Cast Iron, EN 1561 - GJL-250, ASTM Class 35 | | Mechanical seal diameter 48 mm |
| 26 | Shaft | Stainless steel, 1.4057, AISI 431 | | 1. Rotating ring Carbon graphite resin impregnated |
| 27 | Wear ring | Stainless steel, 1.4301, AISI 304 | | 2. Stationary ring SiC, silicon carbide, sintered press. less |
| 28 | Impeller lock nut and washer | A4 (1.4401) | | 3. Secondary seal Ethylene propylene rubber (EPDM) |
| 29 | Impeller key | Stainless steel, 1.4571, AISI 316Ti | | 4. Springs CrNiMo - Steel |
| 30 | Fill and drain plugs | Galvanized carbon steel, EN 10277-3, AISI 1213 / 1215 | | 5. Others EPDM - WRAS |
| 31 | Bearing bracket | Cast Iron, EN 1561 - GJL-250, ASTM Class 35 | | Gaskets of the pump Ethylene propylene rubber (EPDM) |
| 32 | | | | |
| 33 | | | | |
| 34 | | | | |
| 35 | | | | |
| 36 | | | | |
| 37 | | | | |
| 38 | | | | |
| 39 | | | | |
| 40 | | | | |
| 41 | | | | |

| Motor data | | | | Coupling | | | |
|------------|-----------------|--|---------------------------|---------------------|--------------------------------------|-------------|--------|
| 42 | Manufacturer | Lowara | | Manufacturer | Flender | | |
| 43 | Specific design | IE3 3ph Surface Motor - Premium Efficiency | | Series | Standard Coupling - N-EUPEX - Type B | | |
| 44 | Type | 3MAS 225 S B3 37 kW | | Shaft diameter | Pump 42 mm | Motor 60 mm | |
| 45 | Rated power | 37 kW | Rated current 66.6 A | Frame size | 140 | | |
| 46 | Nominal speed | 1480 rpm | Rated voltage 400 V | Spacer length | mm 4 | | |
| 47 | Frame size | 225 S | Service factor 1 | Weight | kg 5.6 | | |
| 48 | Weight | kg 241.2 | Degree of protection IP55 | Coupling protection | GR.COUPLGUARD ES42-230-23 A4 | | 3.4 kg |

| Base plate | | | Remarks | | |
|------------|--------|-----------------------|---------|--|--|
| 49 | Name | BASEFRAME_NSC80-7_C00 | | | |
| 50 | Weight | kg 147.2 | | | |

NSCF 80-400/370/L45VCC4

Performance curve

Company name
Contact
Phone number
e-mail address

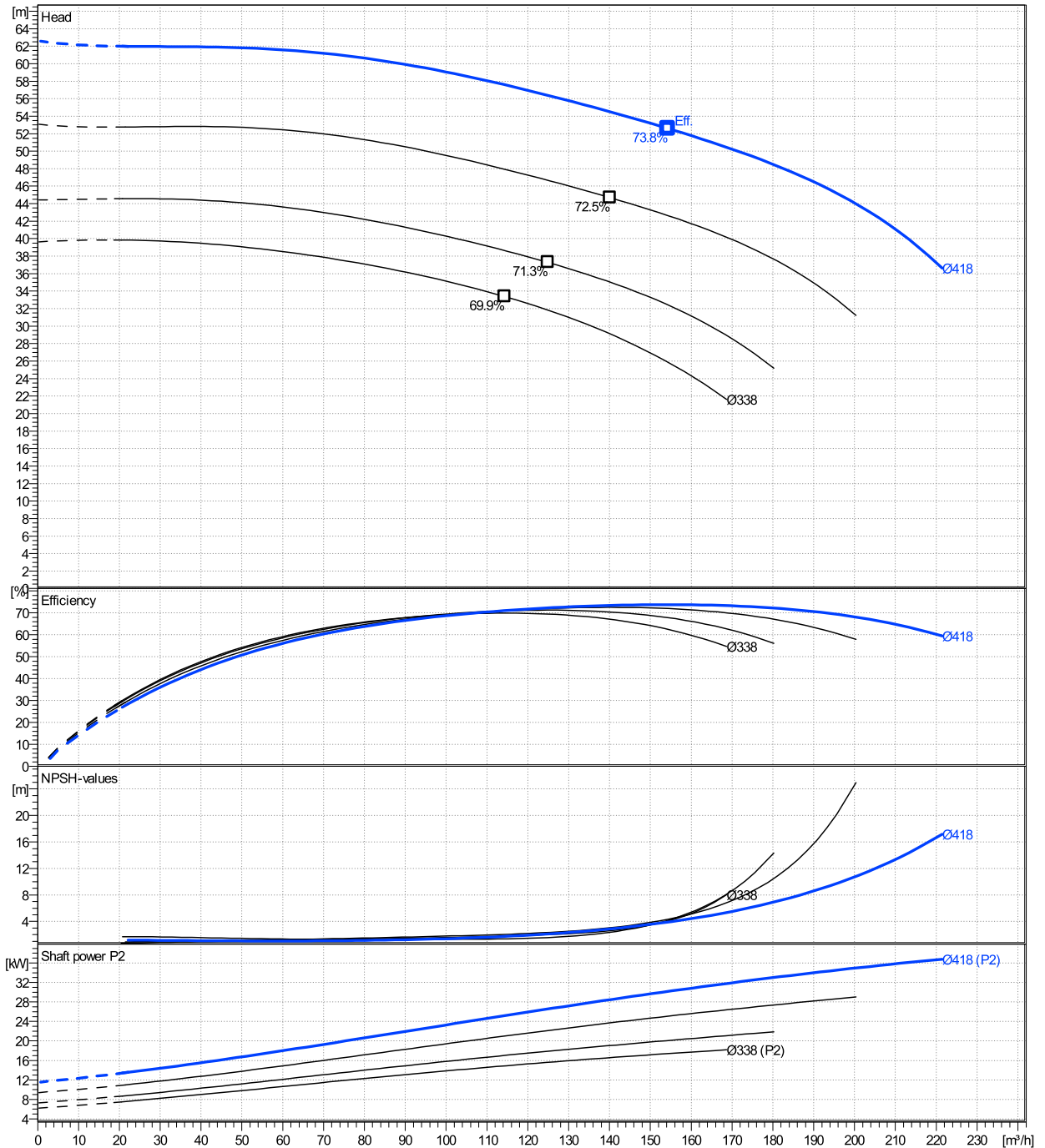
| | Ø mm | Pump capacity | | | Pump head | | Shaft power P2 | | | Frequency | Hz | 50 |
|--------|---------|------------------------------|-----------|----------------|-------------|-------------|----------------|---------|----------------|-----------------|-----|------|
| | | Operating range Min. m³/h | Max. m³/h | η Max. m³/h | H(Q=0) m | η Max. m | P2(Q=0) kW | Max. kW | η Max. kW | Operating speed | rpm | 1480 |
| actual | 418 | 22.1 | 221 | 154 | 62.6 | 52.6 | 36.8 | 30.2 | Nominal flow | m³/h | 0 | |
| Min. | 0 | / | / | 114 | 39.6 | 33.4 | / | 14.9 | Nominal head | m | 0 | |
| Max. | 418 | / | / | 154 | 62.6 | 52.6 | / | 30.2 | Inlet pressure | kPa | 0 | |
| | | | | | | | | | Static head | m | 0 | |

Power datas referred to:

hydr. Performance acceptance acc. To EN ISO 9906 Class Grade 3B

Water, pure [100%] ; 4°C; 1000kg/m³; 1.57mm²/s

MEI: >=0,70 - according to Ecodesign Directive 2009/125/EC and Regulation (EU) No.547/2012



NSCF 80-400/370/L45VCC4

Dimensions

Company name
Contact
Phone number
e-mail address

Frame mounted
Standard coupling
3MAS 225 S B3 37 kW

Electrical and dimensional data refer to IE3 motor

Dimensions [mm]

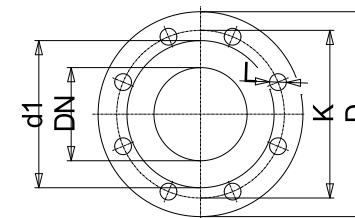
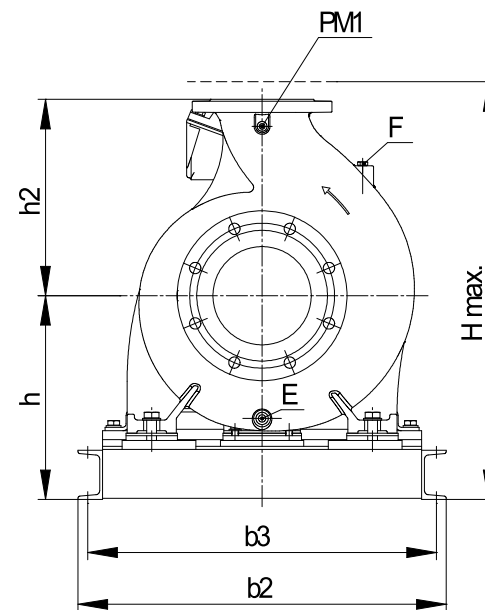
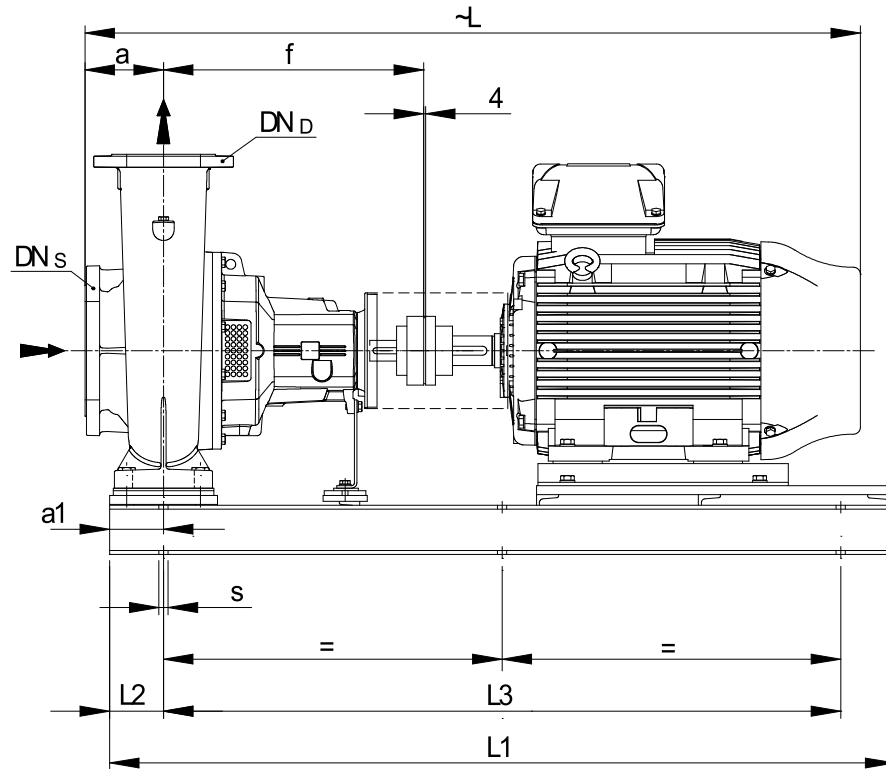
| | |
|---------|---------|
| a | 125 |
| a1 | 110 |
| b2 | 750 |
| b3 | 710 |
| CTO | 0 |
| DNd | 80 |
| DNs | 100 |
| E | 3/8" |
| F | 3/8" |
| f | 530 |
| Guard | 254 |
| h | 415 |
| h2 | 355 |
| Hmax | 770 |
| L | 1500 |
| L1 | 1600 |
| L2 | 110 |
| L3 | 1380 |
| PM1 | 1/4" |
| s | 6xØ19 |
| Trim | 0 |
| Volumen | 0.86625 |

Weight

| | |
|---------------------|-----------------|
| Total weight | 551.4 kg |
|---------------------|-----------------|

Connections

| Suction nozzle | | Discharge nozzle | |
|----------------|-----|------------------|-----|
| DN100 | | DN80 | |
| PN10/16 | | PN10/16 | |
| EN1092-2 | | EN1092-2 | |
| C | 24 | C | 22 |
| D | 230 | D | 200 |
| d1 | 157 | d1 | 132 |
| K | 180 | K | 160 |
| L | 19 | L | 19 |
| z | 8 | z | 8 |



Value C, D may vary from Standard

Dimensions and weight without obligation

| | |
|---------|-------------------------|
| Project | Xylect-20101285 |
| Block | NSCF 80-400/370/L45VCC4 |

| | |
|------------|------------|
| Created by | |
| Created on | 12/15/2024 |

| | |
|-------------|------------|
| Last update | 12/15/2024 |
|-------------|------------|