

# NSCF100-200/55/P46PCC4

## Technical data

Company name  
Contact  
Phone number  
e-mail address

| Operating data |                           |                  |  |                |
|----------------|---------------------------|------------------|--|----------------|
| 1              | Pumpe type                | Single head pump | Fluid                                      | Water, pure    |
| 2              | No. of pumps              | 1                | Operating temperature t A                  | °F 39.2        |
| 3              | Nominal flow              | US g.p.m. 0      | Max / Min Operating Temperature mech. Seal | °F 120 / -25   |
| 4              | Nominal head              | ft 0             | pH-value at t A                            | 7              |
| 5              | Static head               | ft 0             | Density at t A                             | lb/ft³ 62.4    |
| 6              | Inlet pressure            | psi 0            | Kin. viscosity at t A                      | ft²/s 1.689E-5 |
| 7              | Environmental temperature | °F 68            | Vapor pressure at t A                      | psi 14.5       |
| 8              | Available system NPSH     | ft 0             | Altitude                                   | 0              |

| Pump data |                       |                                    |                 |                      |
|-----------|-----------------------|------------------------------------|-----------------|----------------------|
| 9         | Lubrication           | Standard, Grease lubrication [Std] |                 |                      |
| 10        | Execution             | Standard coupling                  |                 |                      |
| 11        | Design                | Horizontal                         |                 |                      |
| 12        | Operating speed       | 1758 rpm                           | Stages          | 1                    |
| 13        | Suction nozzle        | DN125 / PN10/16 / EN1092-2         | Impeller Ø      | Max. inch 9 1/32     |
| 14        | Discharge nozzle      | DN100 / PN10/16 / EN1092-2         |                 | designed inch 7 1/16 |
| 15        | Max. casing pressure  | psi                                | Flow            | Min. inch 7 1/16     |
| 16        | Max. working pressure | psi 20.8                           |                 | Nominal US g.p.m.    |
| 17        | Impeller type         | Radial impeller                    |                 | Max- US g.p.m. 833.2 |
| 18        | Head H(Q=0)           | ft 48                              | Head            | Min- US g.p.m. 122.8 |
| 19        | Max. shaft power      | hp 7                               |                 | Nominal ft           |
| 20        | Pump weight           | kg 198.4                           |                 | at Qmax ft 18.7      |
| 21        | Total weight          | lb 574.5                           | at Qmin ft 47.8 | Shaft power hp       |
|           |                       |                                    |                 | Efficiency %         |
|           |                       |                                    |                 | NPSH 3% ft           |

| Materials |                              |   |                   |  |
|-----------|------------------------------|---|-------------------|--|
| 22        |                              | <b>Pump</b>   | <b>Shaft Seal</b> |  |
| 23        | Volute Casing                | Cast Iron, EN 1561 - GJL-250, ASTM Class 35           |                   | Single mechanical seal, without shaft sleeve                 |
| 24        | Impeller                     | Cast Iron, EN 1561 - GJL-200, ASTM Class 30           |                   | eMG12 - Ø38mm BQ7EGG-WA                                      |
| 25        | Casing Cover                 | Cast Iron, EN 1561 - GJL-250, ASTM Class 35           |                   | Mechanical seal diameter 1 1/2 inch                          |
| 26        | Shaft                        | Stainless steel, 1.4057, AISI 431                     |                   | 1. Rotating ring Carbon graphite resin impregnated           |
| 27        | Wear ring                    | Stainless steel, 1.4301, AISI 304                     |                   | 2. Stationary ring SiC, silicon carbide, sintered press.less |
| 28        | Impeller lock nut and washer | A4 (1.4401)   |                   | 3. Secondary seal Ethylene propylene rubber (EPDM)           |
| 29        | Impeller key                 | Stainless steel, 1.4571, AISI 316Ti                   |                   | 4. Springs CrNiMo - Steel                                    |
| 30        | Fill and drain plugs         | Galvanized carbon steel, EN 10277-3, AISI 1213 / 1215 |                   | 5. Others EPDM - WRAS  |
| 31        | Bearing bracket              | Cast Iron, EN 1561 - GJL-250, ASTM Class 35           |                   | Gaskets of the pump Ethylene propylene rubber (EPDM)         |
| 32        |                              |   |                   |  |
| 33        |                              |   |                   |  |
| 34        |                              |   |                   |  |
| 35        |                              |   |                   |  |
| 36        |                              |   |                   |  |
| 37        |                              |   |                   |  |
| 38        |                              |   |                   |  |
| 39        |                              |   |                   |  |
| 40        |                              |   |                   |  |
| 41        |                              |   |                   |  |

| Motor data |                 |  |                           | Electrical and dimensional data refer to IE3 motor |                                      | Coupling         |  |
|------------|-----------------|--|---------------------------|--|--------------------------------------|------------------|--|
| 42         | Manufacturer    | Lowara                                     |                           | Manufacturer                                       | Flender                              |                  |  |
| 43         | Specific design | IE3 3ph Surface Motor - Premium Efficiency |                           | Series   | Standard Coupling - N-EUPEX - Type B |                  |  |
| 44         | Type            | PLM 132 B3 5,5 kW                          |                           | Shaft diameter                                     | Pump 1 1/4 inch                      | Motor 1 1/2 inch |  |
| 45         | Rated power     | 7.3756 hp                                  | Rated current 11.6 A      | Frame size   | 95                                   |                  |  |
| 46         | Nominal speed   | 1758 rpm                                   | Rated voltage 380 V       | Spacer length                                      | inch 3/16                            |                  |  |
| 47         | Frame size      | 132  | Service factor 1          | Weight   | lb 4.9                               |                  |  |
| 48         | Weight          | lb 138.4                                   | Degree of protection IP55 | Coupling protection                                | GR.COUPLGUARD ES32-190-16 A4         | 3.9683 lb        |  |

| Base plate |        |                       | Remarks |  |
|------------|--------|-----------------------|---------|--|
| 49         | Name   | BASEFRAME_NSC80-1_C00 |         |  |
| 50         | Weight | lb 228.8              |         |  |

# NSCF100-200/55/P46PCC4

## Performance curve

Company name  
Contact  
Phone number  
e-mail address

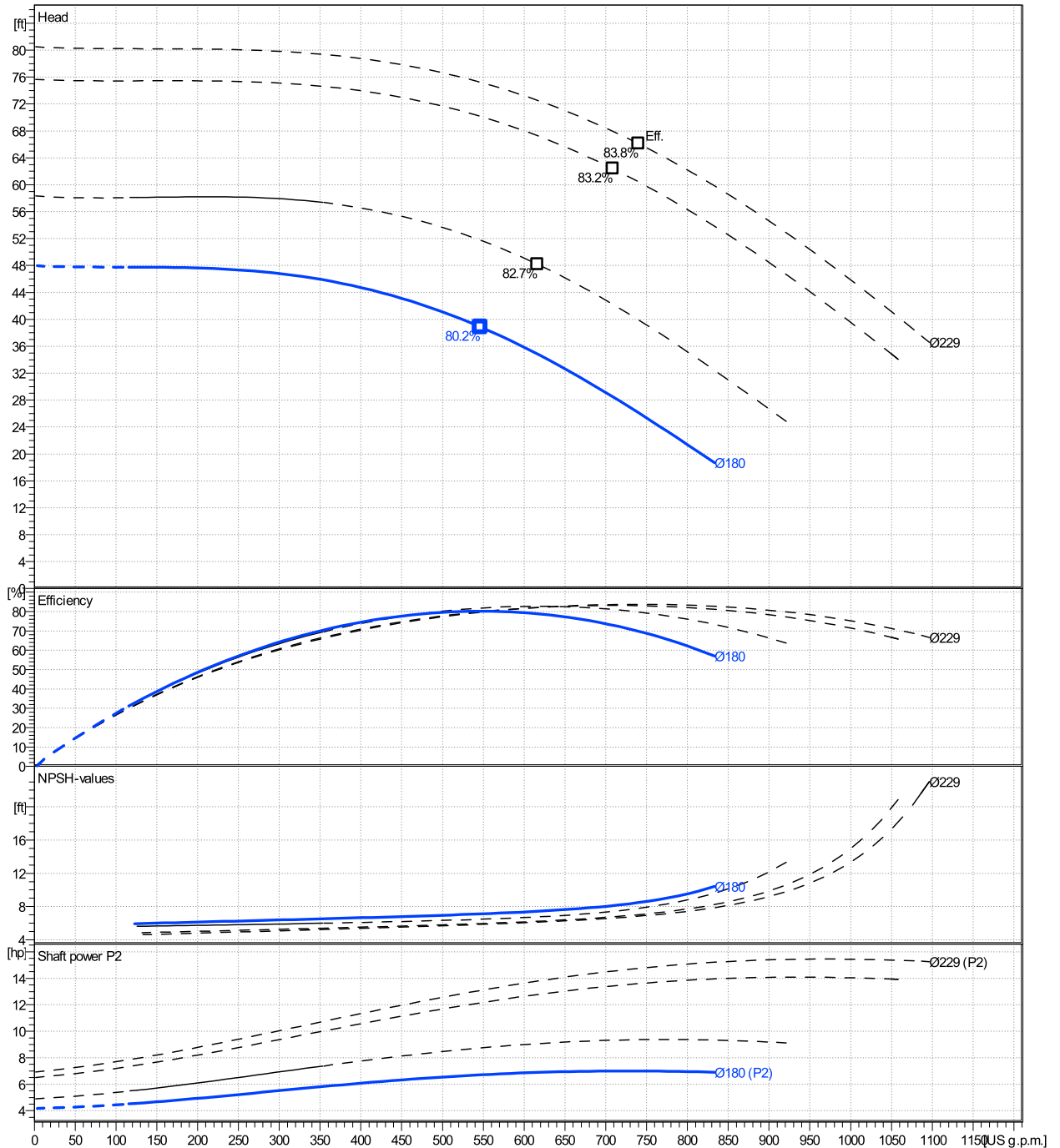
|        | Ø<br>mm | Pump capacity                        |                   |                        | Pump head    |                 | Shaft power P2 |            |                 | Frequency       | Hz        |   |
|--------|---------|--------------------------------------|-------------------|------------------------|--------------|-----------------|----------------|------------|-----------------|-----------------|-----------|---|
|        |         | Operating range<br>Min.<br>US g.p.m. | Max.<br>US g.p.m. | η<br>Max.<br>US g.p.m. | H(Q=0)<br>ft | η<br>Max.<br>ft | P2(Q=0)<br>hp  | Max.<br>hp | η<br>Max.<br>hp | Operating speed | rpm       |   |
| actual | 7 1/16  | 123                                  | 833               | 546                    | 48           | 38.9            | 7              | 6.71       |                 |                 | 1758      |   |
| Min.   | 0       | /                                    | /                 | 546                    | 48           | 38.9            | /              | 6.71       |                 |                 |           | 0 |
| Max.   | 9 1/32  | /                                    | /                 | 740                    | 80.5         | 66.1            | /              | 14.8       |                 |                 |           | 0 |
|        |         |                                      |                   |                        |              |                 |                |            |                 | Nominal flow    | US g.p.m. | 0 |
|        |         |                                      |                   |                        |              |                 |                |            |                 | Nominal head    | ft        | 0 |
|        |         |                                      |                   |                        |              |                 |                |            |                 | Inlet pressure  | psi       | 0 |
|        |         |                                      |                   |                        |              |                 |                |            |                 | Static head     | ft        | 0 |

**Power datas referred to:**

hydr. Performance acceptance acc. To EN ISO 9906 Class Grade 3B

Water, pure [100%] ; 39.2°F; 62.4lb/ft³; 1.69E-5ft²/s

MEI: 0,64 - according to Ecodesign Directive 2009/125/EC and Regulation (EU) No.547/2012



# NSCF100-200/55/P46PCC4

## Dimensions

Company name  
Contact  
Phone number  
e-mail address

Frame mounted  
Standard coupling  
PLM 132 B3 5,5 kW

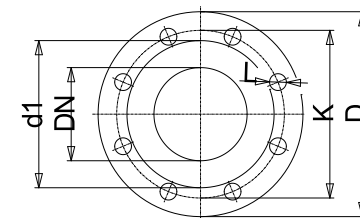
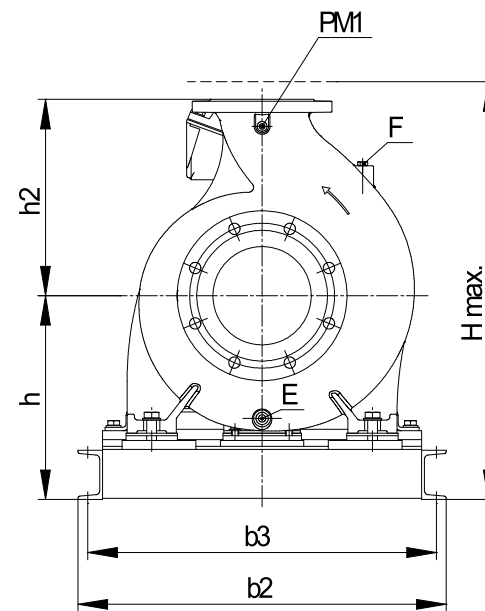
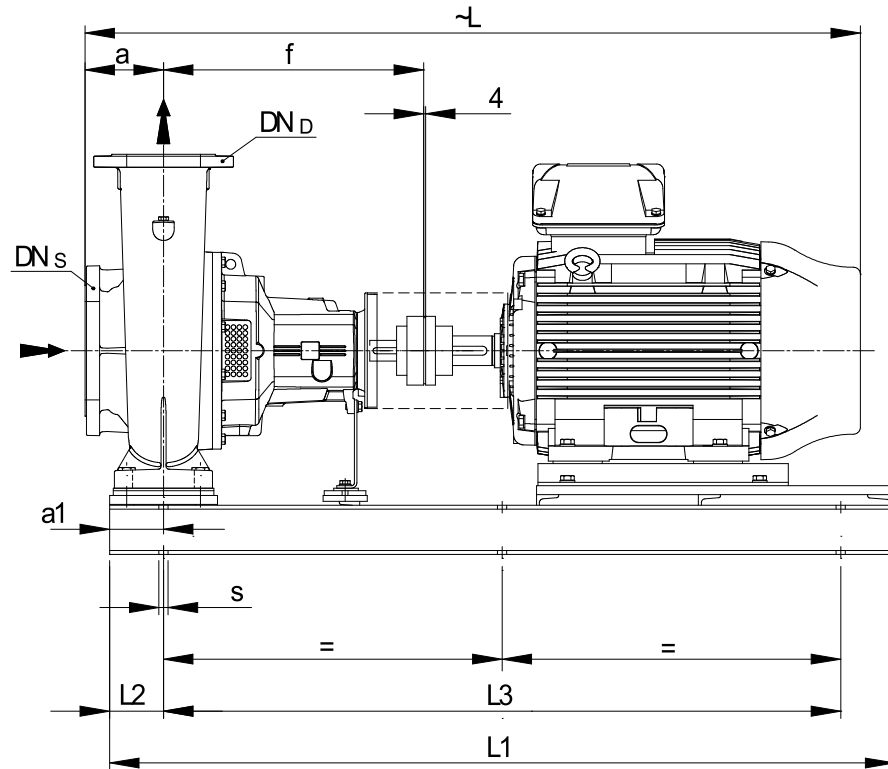
Electrical and dimensional data refer to IE3 motor

### Dimensions [ inch ]

|         |                                  |  |  |
|---------|----------------------------------|--|--|
| a       | 4 <sup>15</sup> / <sub>16</sub>  |  |  |
| a1      | 4 <sup>5</sup> / <sub>16</sub>   |  |  |
| b2      | 26 <sup>3</sup> / <sub>8</sub>   |  |  |
| b3      | 24 <sup>13</sup> / <sub>16</sub> |  |  |
| CTO     |                                  |  |  |
| DNd     | 3 <sup>15</sup> / <sub>16</sub>  |  |  |
| DNs     | 4 <sup>15</sup> / <sub>16</sub>  |  |  |
| E       | 3/8"                             |  |  |
| F       | 3/8"                             |  |  |
| f       | 18 <sup>1</sup> / <sub>2</sub>   |  |  |
| Guard   | 6 <sup>7</sup> / <sub>16</sub>   |  |  |
| h       | 15 <sup>3</sup> / <sub>16</sub>  |  |  |
| h2      | 11 <sup>1</sup> / <sub>32</sub>  |  |  |
| Hmax    | 26 <sup>3</sup> / <sub>16</sub>  |  |  |
| L       | 42 <sup>11</sup> / <sub>16</sub> |  |  |
| L1      | 43 <sup>5</sup> / <sub>16</sub>  |  |  |
| L2      | 4 <sup>5</sup> / <sub>16</sub>   |  |  |
| L3      | 34 <sup>5</sup> / <sub>8</sub>   |  |  |
| PM1     | 1/4"                             |  |  |
| s       | 6xØ19                            |  |  |
| Trim    |                                  |  |  |
| Volumen | 1 <sup>1</sup> / <sub>32</sub>   |  |  |

| Weight       |          |
|--------------|----------|
| Total weight | 260.6 kg |

| Connections    |                                 |                  |                                |
|----------------|---------------------------------|------------------|--------------------------------|
| Suction nozzle |                                 | Discharge nozzle |                                |
| DN125          |                                 | DN100            |                                |
| PN10/16        |                                 | PN10/16          |                                |
| EN1092-2       |                                 | EN1092-2         |                                |
| C              | 1 <sup>1</sup> / <sub>32</sub>  | C                | 1 <sup>5</sup> / <sub>16</sub> |
| D              | 10 <sup>1</sup> / <sub>16</sub> | D                | 9 <sup>1</sup> / <sub>16</sub> |
| d1             | 7 <sup>1</sup> / <sub>4</sub>   | d1               | 6 <sup>3</sup> / <sub>16</sub> |
| K              | 8 <sup>1</sup> / <sub>4</sub>   | K                | 7 <sup>1</sup> / <sub>16</sub> |
| L              | 3 <sup>3</sup> / <sub>4</sub>   | L                | 3 <sup>3</sup> / <sub>4</sub>  |
| Z              | 5 <sup>5</sup> / <sub>16</sub>  | Z                | 5 <sup>5</sup> / <sub>16</sub> |



Value C, D may vary from Standard

Note:  
Weight and Dimensions of selected Hydrovar are NOT considered.  
Please refer to additional datasheet.

### Dimensions and weight without obligation

|         |                             |            |           |             |           |
|---------|-----------------------------|------------|-----------|-------------|-----------|
| Project | Xylect-20182283             | Created by |           | Last update | 1/11/2025 |
| Block   | NSCF100-200/1100/L26UCC4 E4 | Created on | 1/11/2025 |             |           |