

# NSCF100-250/1100/L26UCC4 E4

## Technical data

Company name  
Contact  
Phone number  
e-mail address

Operating data				
1	Pumpe type	Single head pump	Fluid	Water, pure
2	No. of pumps	1	Operating temperature t A	°F 39.2
3	Nominal flow	US g.p.m. 0	Max / Min Operating Temperature mech. Seal	°F 120 / -25
4	Nominal head	ft 0	pH-value at t A	7
5	Static head	ft 0	Density at t A	lb/ft³ 62.4
6	Inlet pressure	psi 0	Kin. viscosity at t A	ft²/s 1.689E-5
7	Environmental temperature	°F 68	Vapor pressure at t A	psi 14.5
8	Available system NPSH	ft 0	Altitude	0

Pump data				
9	Lubrication	Standard, Grease lubrication [Std]		
10	Execution	Standard coupling		
11	Design	Horizontal		
12	Operating speed	3588 rpm	Stages	1
13	Suction nozzle	DN125 / PN10/16 / EN1092-2	Impeller Ø	Max. inch 9 5/16
14	Discharge nozzle	DN100 / PN10/16 / EN1092-2		designed inch 9 5/16
15	Max. casing pressure	psi	Flow	Min. inch 8 3/4
16	Max. working pressure	psi 153.6		Nominal US g.p.m.
17	Impeller type	Radial impeller		Max- US g.p.m. 2069.2
18	Head H(Q=0)	ft 350	Head	Min- US g.p.m. 336.3
19	Max. shaft power	hp 148.8		Nominal ft
20	Pump weight	kg 220.5	at Qmax ft 219.7	Shaft power hp
21	Total weight	lb On demand	at Qmin ft 355	
			Efficiency %	
			NPSH 3%	

Materials				
22		<b>Pump</b>	<b>Shaft Seal</b>	
23	Volute Casing	Cast Iron, EN 1561 - GJL-250, ASTM Class 35		Single mechanical seal, without shaft sleeve
24	Impeller	Cast Iron, EN 1561 - GJL-200, ASTM Class 30		eMG12 - Ø38mm BQ7EGG-WA
25	Casing Cover	Cast Iron, EN 1561 - GJL-250, ASTM Class 35		Mechanical seal diameter 1 1/2 inch
26	Shaft	Stainless steel, 1.4057, AISI 431		1. Rotating ring Carbon graphite resin impregnated
27	Wear ring	Stainless steel, 1.4301, AISI 304		2. Stationary ring SiC, silicon carbide, sintered press. less
28	Impeller lock nut and washer	A4 (1.4401)		3. Secondary seal Ethylene propylene rubber (EPDM)
29	Impeller key	Stainless steel, 1.4571, AISI 316Ti		4. Springs CrNiMo - Steel
30	Fill and drain plugs	Galvanized carbon steel, EN 10277-3, AISI 1213 / 1215		5. Others EPDM - WRAS
31	Bearing bracket	Cast Iron, EN 1561 - GJL-250, ASTM Class 35		Gaskets of the pump Ethylene propylene rubber (EPDM)
32				
33				
34				
35				
36				
37				
38				
39				
40				
41				

Motor data				Electrical and dimensional data refer to IE4 motor		Coupling	
42	Manufacturer	Lowara		Manufacturer	Flender		
43	Specific design	IE4 3ph Surface Motor - Super Premium Efficiency		Series	Standard Coupling - N-EUPEX - Type B		
44	Type	3MGS 315 S B3 110 kW E4		Shaft diameter	Pump 1 1/4 inch	Motor 2 9/16 inch	
45	Rated power	147.51 hp	Rated current 195 A	Frame size	160		
46	Nominal speed	3588 rpm	Rated voltage 380 V	Spacer length	inch 3/16		
47	Frame size	315 S	Service factor 1	Weight	lb 17.2		
48	Weight	lb 1,998.9	Degree of protection IP55	Coupling protection	GR.COUPLGUARD ES32-190-23 A4		5.291 lb

Base plate			Remarks	
49	Name	FRAME - N/A		
50	Weight	lb 0.0		

# NSCF100-250/1100/L26UCC4 E4

## Performance curve

Company name  
Contact  
Phone number  
e-mail address

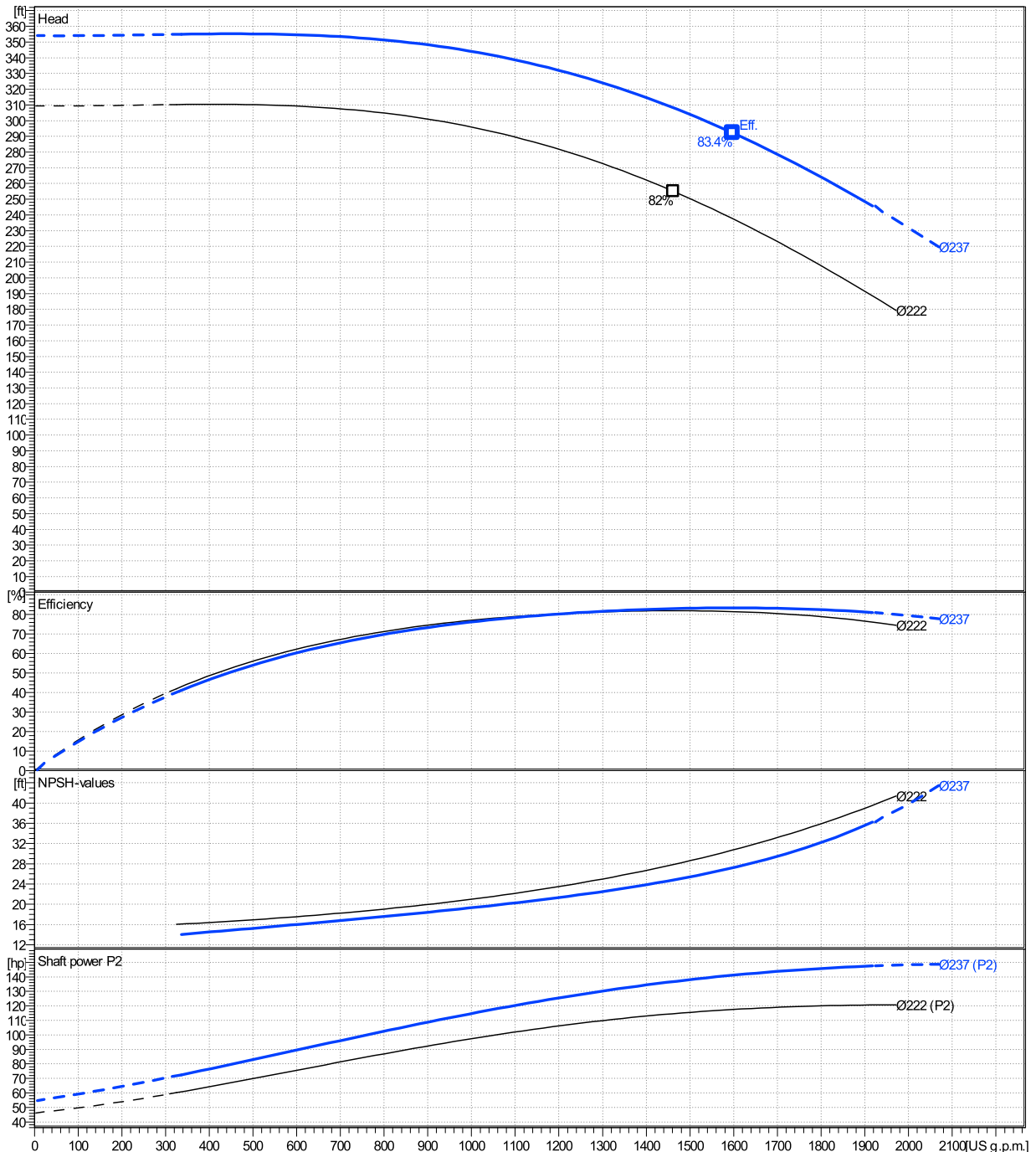
	Ø mm	Pump capacity Operating range η			Pump head H(Q=0) η		Shaft power P2 P2(Q=0) η			Frequency Hz	
		Min. US g.p.m.	Max. US g.p.m.	Max. US g.p.m.	ft	ft	hp	Max. hp	η hp	rpm	
actual	9 5/16	336	1920	1600	354	292	149	141	3588	0	
Min.	0	/	/	1460	309	255	/	115	0	0	
Max.	9 5/16	/	/	1600	354	292	/	141	0	0	

**Power datas referred to:**

hydr. Performance acceptance acc. To EN ISO 9906 Class Grade 3B

Water, pure [100%] ; 39.2°F; 62.4lb/ft³; 1.69E-5ft²/s

MEI: >=0,70 - according to Ecodesign Directive 2009/125/EC and Regulation (EU) No.547/2012



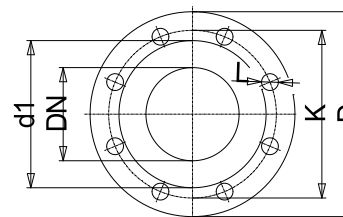
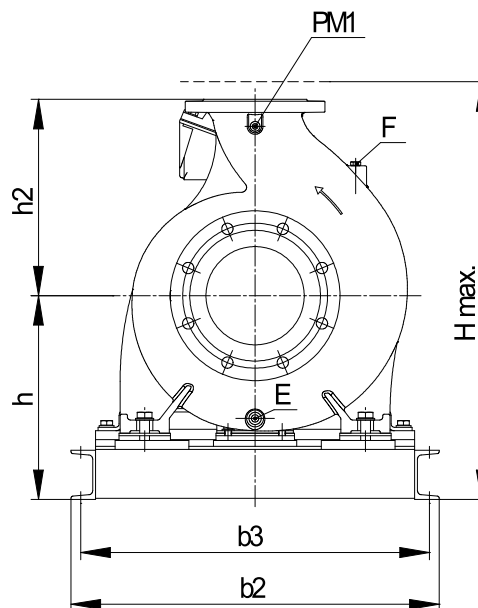
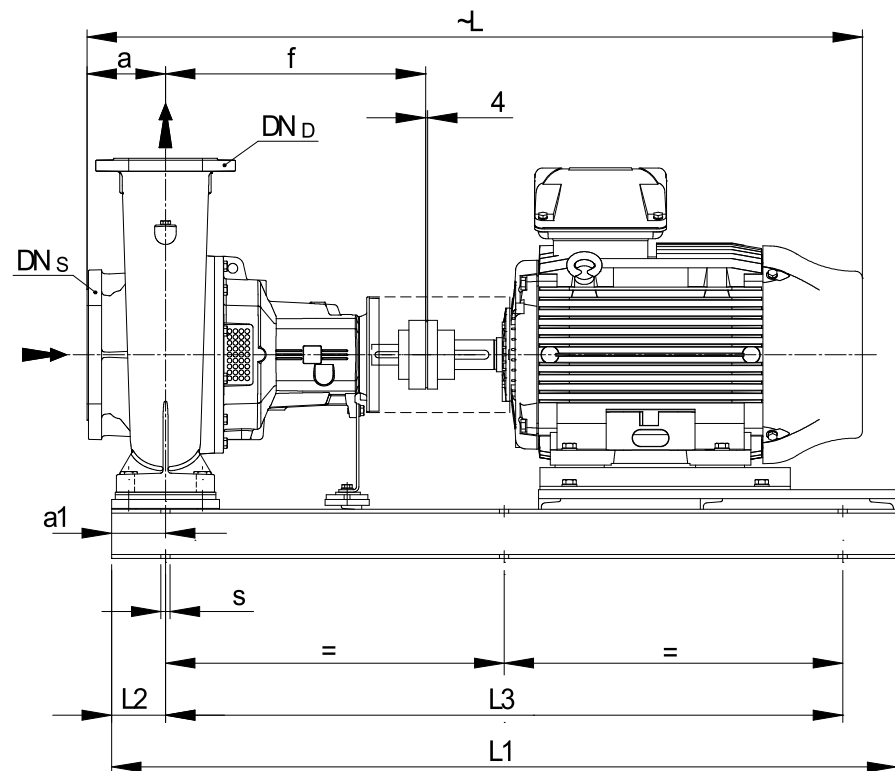
# NSCF100-250/1100/L26UCC4 E4

## Dimensions

Company name  
Contact  
Phone number  
e-mail address

Frame mounted  
Standard coupling  
3MGS 315 S B3 110 kW E4

Electrical and dimensional data refer to IE4 motor



Value C, D may vary from Standard

Dimensions [ inch ]	
a	5 <sup>1</sup> / <sub>2</sub>
a1	
b2	
b3	
CTO	
DNd	3 <sup>15</sup> / <sub>16</sub>
DNs	4 <sup>15</sup> / <sub>16</sub>
E	3/8"
F	3/8"
f	18 <sup>1</sup> / <sub>2</sub>
Guard	8 <sup>13</sup> / <sub>16</sub>
h2	11 <sup>1</sup> / <sub>32</sub>
L1	
L2	
L3	
PM1	1/4"
s	on request
Trim	

Weight	
Total weight	On demand kg

Connections			
Suction nozzle		Discharge nozzle	
DN125		DN100	
PN10/16		PN10/16	
EN1092-2		EN1092-2	
C	1 <sup>1</sup> / <sub>32</sub>	C	1 <sup>5</sup> / <sub>16</sub>
D	10 <sup>1</sup> / <sub>16</sub>	D	9 <sup>1</sup> / <sub>16</sub>
d1	7 <sup>1</sup> / <sub>4</sub>	d1	6 <sup>3</sup> / <sub>16</sub>
K	8 <sup>1</sup> / <sub>4</sub>	K	7 <sup>1</sup> / <sub>16</sub>
L	3/4	L	3/4
Z	5/16	Z	5/16

### Dimensions and weight without obligation

Project Xylect-20182283  
Block NSCF100-250/1100/L26UCC4 E4

Created by  
Created on 1/11/2025

Last update 1/11/2025