

NSCF150-200/185/L46UCC4

Technical data

Company name
Contact
Phone number
e-mail address

Operating data					
1	Pumpe type	Single head pump	Fluid	Water, pure	
2	No. of pumps	1	Operating temperature at t A	°F	39.2
3	Nominal flow	US g.p.m. 0	Max / Min Operating Temperature mech. Seal	°F	120 / -25
4	Nominal head	ft 0	pH-value at t A		7
5	Static head	ft 0	Density at t A	lb/ft ³	62.4
6	Inlet pressure	psi 0	Kin. viscosity at t A	ft ² /s	1.689E-5
7	Environmental temperature	°F 68	Vapor pressure at t A	psi	14.5
8	Available system NPSH	ft 0	Altitude		0

Pump data					
9	Lubrication	Standard, Grease lubrication [Std]			
10	Execution	Standard coupling			
11	Design	Horizontal			
12	Operating speed	1764 rpm	Stages	1	
13	Suction nozzle	DN200 / PN16 / EN1092-2	Impeller Ø	Max.	inch 9 5/16
14	Discharge nozzle	DN150 / PN10/16 / EN1092-2		designed	inch 8 5/16
15	Max. casing pressure	psi	Flow	Min.	inch 7 1/2
16	Max. working pressure	psi 27.8		Nominal US g.p.m.	
17	Impeller type	Radial impeller		Max-	US g.p.m. 2501.1
18	Head H(Q=0)	ft 64	Head	Min-	US g.p.m. 300.6
19	Max. shaft power	hp 24.1		Nominal	ft
20	Pump weight	kg 366		at Qmax	ft 24.3
21	Total weight	lb 876.1	Shaft power	hp	
			Efficiency	%	
			NPSH 3%	ft	

Materials					
22		Pump	Shaft Seal		
23	Volute Casing	Cast Iron, EN 1561 - GJL-250, ASTM Class 35		Single mechanical seal, without shaft sleeve	
24	Impeller	Cast Iron, EN 1561 - GJL-200, ASTM Class 30		eMG12 - Ø38mm	BQ7EGG-WA
25	Casing Cover	Cast Iron, EN 1561 - GJL-250, ASTM Class 35		Mechanical seal diameter	1 1/2 inch
26	Shaft	Stainless steel, 1.4057, AISI 431		1. Rotating ring	Carbon graphite resin impregnated
27	Wear ring	Stainless steel, 1.4301, AISI 304		2. Stationary ring	SiC, silicon carbide, sintered press.less
28	Impeller lock nut and washer	A4 (1.4401)		3. Secondary seal	Ethylene propylene rubber (EPDM)
29	Impeller key	Stainless steel, 1.4571, AISI 316Ti		4. Springs	CrNiMo - Steel
30	Fill and drain plugs	Galvanized carbon steel, EN 10277-3, AISI 1213 / 1215		5. Others	EPDM - WRAS
31	Bearing bracket	Cast Iron, EN 1561 - GJL-250, ASTM Class 35		Gaskets of the pump	Ethylene propylene rubber (EPDM)
32					
33					
34					
35					
36					
37					
38					
39					
40					
41					

Motor data				Electrical and dimensional data refer to IE3 motor		Coupling	
42	Manufacturer	Lowara		Manufacturer	Flender		
43	Specific design	IE3 3ph Surface Motor - Premium Efficiency		Series	Standard Coupling - N-EUPEX - Type B		
44	Type	3MAS 180 M B3 18,5 kW		Shaft diameter	Pump 1 1/4 inch	Motor 1 7/8 inch	
45	Rated power	24.809 hp	Rated current	37.3 A	Frame size	110	
46	Nominal speed	1764 rpm	Rated voltage	380 V	Spacer length	inch	3/16
47	Frame size	180 M	Service factor	1	Weight	lb	7.3
48	Weight	lb 280.4	Degree of protection	IP55	Coupling protection	GR.COUPLGUARD ES32-190-16 A4	3.9683 lb

Base plate			Remarks	
49	Name	BASEFRAME_NSC80-2_C00		
50	Weight	lb 218.5		

NSCF150-200/185/L46UCC4

Performance curve

Company name
Contact
Phone number
e-mail address

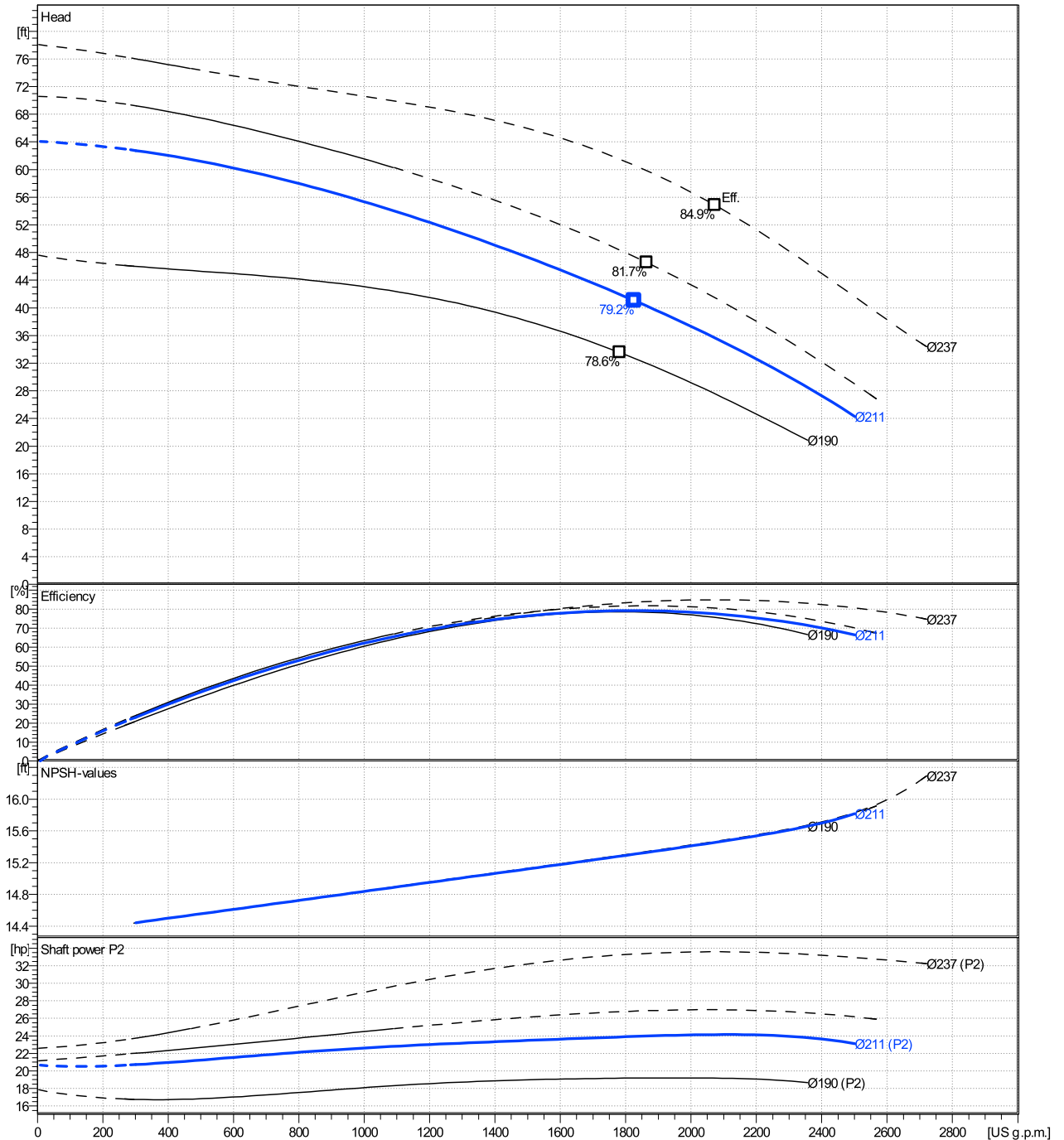
	Ø mm	Pump capacity Operating range η			Pump head H(Q=0) η		Shaft power P2 P2(Q=0) Max. η			Frequency Hz	
		Min. US g.p.m.	Max. US g.p.m.	Max. US g.p.m.	ft	ft	hp	hp	hp	rpm	
actual	8 5/16	301	2500	1830	64.1	41.1	24.1	23.9	60	1764	
Min.	0	/	/	1780	47.6	33.5	/	19.2		0	
Max.	9 5/16	/	/	2070	78.1	54.8	/	33.6		0	

Power datas referred to:

hydr. Performance acceptance acc. To EN ISO 9906 Class Grade 3B

Water, pure [100%] ; 39.2°F; 62.4lb/ft³; 1.69E-5ft²/s

MEI: 0,69 - according to Ecodesign Directive 2009/125/EC and Regulation (EU) No.547/2012



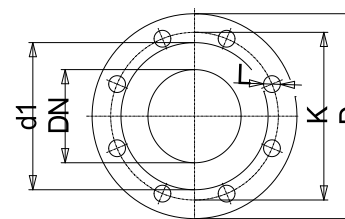
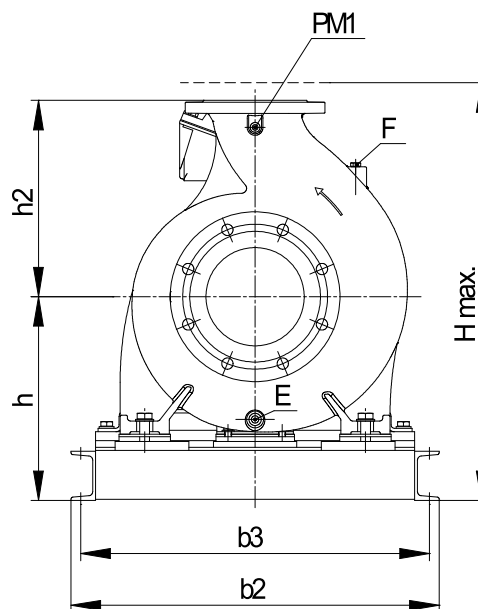
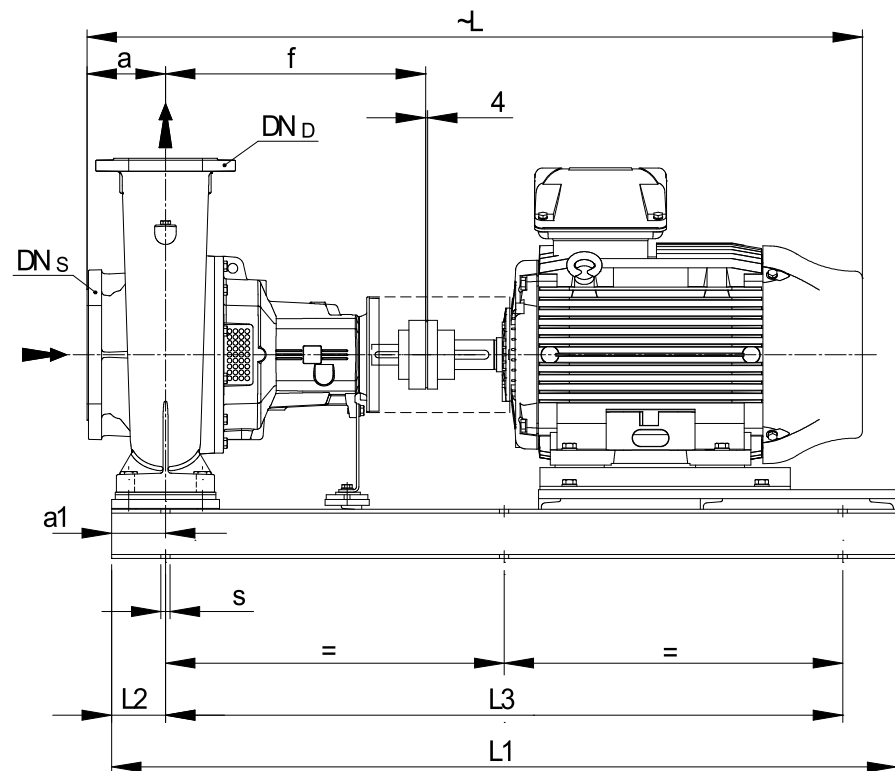
NSCF150-200/185/L46UCC4

Dimensions

Company name
Contact
Phone number
e-mail address

Frame mounted
Standard coupling
3MAS 180 M B3 18,5 kW

Electrical and dimensional data refer to IE3 motor



Value C, D may vary from Standard

Dimensions		[inch]	
a	6 ⁵ / ₁₆		
a1	4 ⁵ / ₁₆		
b2	26 ³ / ₈		
b3	24 ¹³ / ₁₆		
CTO			
DNd	5 ⁷ / ₈		
DNs	7 ⁷ / ₈		
E	3/8"		
F	3/8"		
f	18 ¹ / ₂		
Guard	7 ⁵ / ₈		
h	15 ³ / ₁₆		
h2	15 ³ / ₄		
Hmax	30 ⁹ / ₈		
L	52 ⁹ / ₁₆		
L1	52 ³ / ₈		
L2	4 ⁵ / ₁₆		
L3	43 ¹¹ / ₁₆		
PM1	1/4"		
s	6xØ19		
Trim			
Volumen	1/32		

Weight	
Total weight	397.4 kg

Connections			
Suction nozzle		Discharge nozzle	
DN200		DN150	
PN16		PN10/16	
EN1092-2		EN1092-2	
C	1 ³ / ₁₆	C	1 ¹ / ₃₂
D	13 ⁹ / ₁₆	D	11 ¹ / ₄
d1	10 ¹ / ₂	d1	8 ⁵ / ₁₆
K	11 ⁵ / ₈	K	9 ⁷ / ₁₆
L	7 ⁷ / ₈	L	7 ⁷ / ₈
Z	1/2	Z	5 ⁵ / ₁₆

Note:
Weight and Dimensions of selected Hydrovar are NOT considered.
Please refer to additional datasheet.

Dimensions and weight without obligation

Project Xylect-20182283
Block NSCF150-200/300/L46UCC4

Created by
Created on 1/11/2025

Last update 1/11/2025