

NSCF150-315/185/L66UCC4

Technical data

Company name
Contact
Phone number
e-mail address

Operating data				
1	Pumpe type	Single head pump	Fluid	Water, pure
2	No. of pumps	1	Operating temperature t A	°F 39.2
3	Nominal flow	US g.p.m. 0	Max / Min Operating Temperature mech. Seal	°F 120 / -25
4	Nominal head	ft 0	pH-value at t A	7
5	Static head	ft 0	Density at t A	lb/ft ³ 62.4
6	Inlet pressure	psi 0	Kin. viscosity at t A	ft ² /s 1.689E-5
7	Environmental temperature	°F 68	Vapor pressure at t A	psi 14.5
8	Available system NPSH	ft 0	Altitude	0

Pump data				
9	Lubrication	Standard, Grease lubrication [Std]		
10	Execution	Standard coupling		
11	Design	Horizontal		
12	Operating speed	1170 rpm	Stages	1
13	Suction nozzle	DN200 / PN16	EN1092-2	
14	Discharge nozzle	DN150 / PN10/16	EN1092-2	
15	Max. casing pressure	psi	Impeller Ø	Max. inch 13 1/8
16	Max. working pressure	psi 28.4		designed inch 12 3/16
17	Impeller type	Radial impeller		
18	Head H(Q=0)	ft 65	Flow	Min. inch 10 3/8
19	Max. shaft power	hp 23.8		Nominal US g.p.m.
20	Pump weight	kg 410.1		Max- US g.p.m. 2016.7
21	Total weight	lb 1,047.6	Min- US g.p.m. 254.3	
			Head	Nominal ft
				at Qmax ft 31.1
				at Qmin ft 65.3
			Shaft power	hp
			Efficiency	%
			NPSH 3%	ft

Materials				
22		Pump	Shaft Seal	
23	Volute Casing	Cast Iron, EN 1561 - GJL-250, ASTM Class 35		Single mechanical seal, without shaft sleeve
24	Impeller	Cast Iron, EN 1561 - GJL-200, ASTM Class 30		eMG12 - Ø48mm BQ7EGG-WA
25	Casing Cover	Cast Iron, EN 1561 - GJL-250, ASTM Class 35		Mechanical seal diameter 1 7/8 inch
26	Shaft	Stainless steel, 1.4057, AISI 431		1. Rotating ring Carbon graphite resin impregnated
27	Wear ring	Stainless steel, 1.4301, AISI 304		2. Stationary ring SiC, silicon carbide, sintered press. less
28	Impeller lock nut and washer	A4 (1.4401)		3. Secondary seal Ethylene propylene rubber (EPDM)
29	Impeller key	Stainless steel, 1.4571, AISI 316Ti		4. Springs CrNiMo - Steel
30	Fill and drain plugs	Galvanized carbon steel, EN 10277-3, AISI 1213 / 1215		5. Others EPDM - WRAS
31	Bearing bracket	Cast Iron, EN 1561 - GJL-250, ASTM Class 35		Gaskets of the pump Ethylene propylene rubber (EPDM)
32				
33				
34				
35				
36				
37				
38				
39				
40				
41				

Motor data				Electrical and dimensional data refer to IE3 motor		Coupling	
42	Manufacturer	Lowara		Manufacturer	Flender		
43	Specific design	IE3 3ph Surface Motor - Premium Efficiency		Series	Standard Coupling - N-EUPEX - Type B		
44	Type	3MAS 200 L B3 18,5 kW		Shaft diameter	Pump 1 5/8 inch	Motor 2 3/16 inch	
45	Rated power	24.809 hp	Rated current	37.7 A	Frame size	125	
46	Nominal speed	1170 rpm	Rated voltage	380 V	Spacer length	inch	3/16
47	Frame size	200 L	Service factor	1	Weight	lb	11.5
48	Weight	lb 370.1	Degree of protection	IP55	Coupling protection	GR.COUPLGUARD ES42-230-16 A4	3.7478 lb

Base plate			Remarks	
49	Name	BASEFRAME_NSC80-4_C00		
50	Weight	lb 252.2		

Project	Xylect-20182283	Created by		Last update	1/11/2025
Block	NSCF150-315/900/L46UCC4 E4	Created on	1/11/2025		

NSCF150-315/185/L66UCC4

Performance curve

Company name
Contact
Phone number
e-mail address

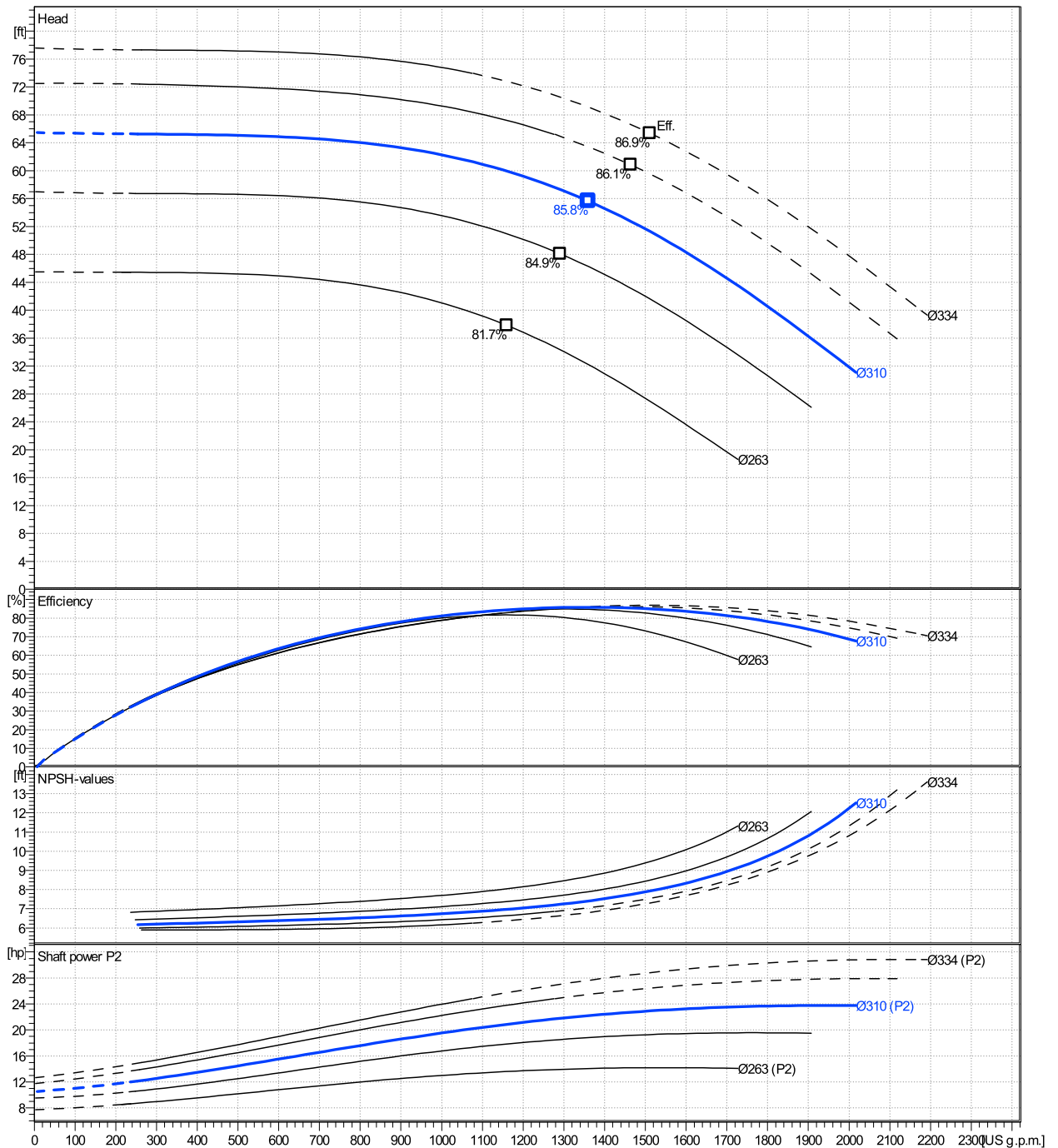
	Ø mm	Pump capacity Operating range η			Pump head η		Shaft power P2 η			Frequency	Hz	
		Min. US g.p.m.	Max. US g.p.m.	Max. US g.p.m.	H(Q=0) ft	Max. ft	P2(Q=0) hp	Max. hp	Max. hp	Operating speed	rpm	
actual	12 3/16	254	2020	1360	65.5	55.6		23.8	22.2	Nominal flow	US g.p.m.	0
Min.	0	/	/	1160	45.5	37.8		/	13.6	Nominal head	ft	0
Max.	13 1/8	/	/	1510	77.6	65.4		/	28.8	Inlet pressure	psi	0
										Static head	ft	0

Power datas referred to:

hydr. Performance acceptance acc. To EN ISO 9906 Class Grade 3B

Water, pure [100%] ; 39.2°F; 62.4lb/ft³; 1.69E-5ft²/s

MEI: N.A - according to Ecodesign Directive 2009/125/EC and Regulation (EU) No.547/2012



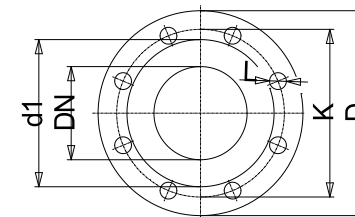
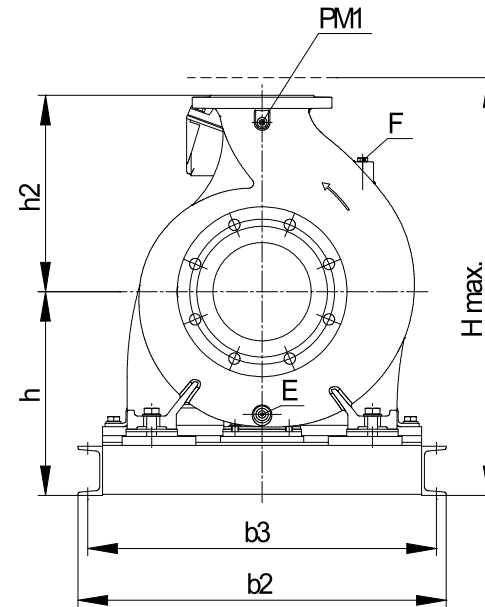
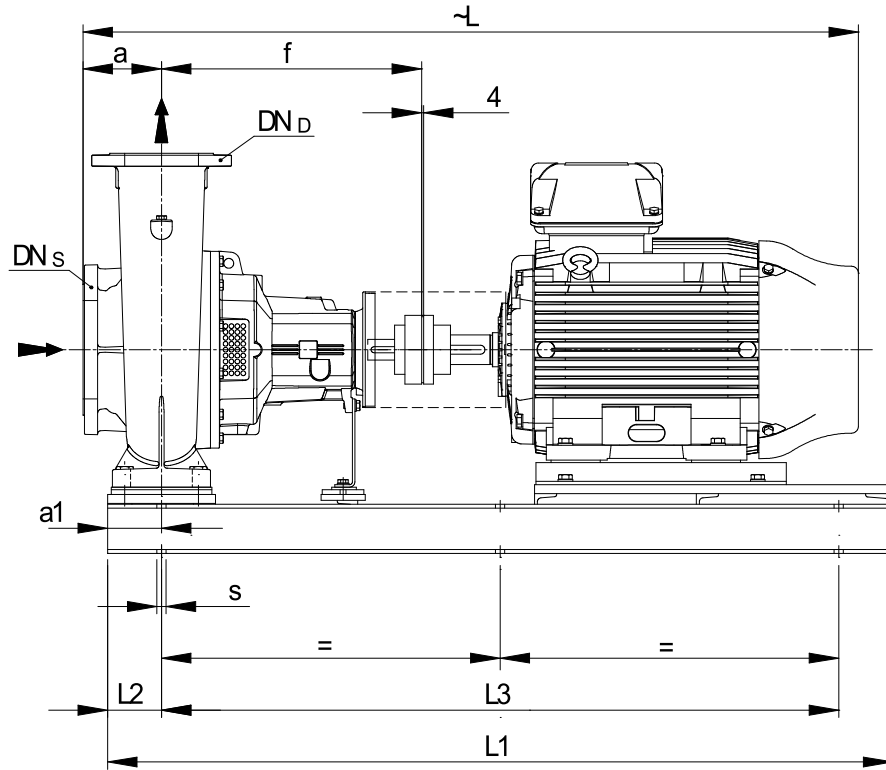
NSCF150-315/185/L66UCC4

Dimensions

Company name
Contact
Phone number
e-mail address

Frame mounted
Standard coupling
3MAS 200 L B3 18,5 kW

Electrical and dimensional data refer to IE3 motor



Value C, D may vary from Standard

Dimensions [inch]	
a	6 ⁵ / ₁₆
a1	4 ⁵ / ₁₆
b2	26 ³ / ₈
b3	24 ¹³ / ₁₆
CTO	
DNd	5 ⁷ / ₈
DNs	7 ⁷ / ₈
E	3/8"
F	3/8"
f	20 ⁷ / ₈
Guard	8 ¹³ / ₁₆
h	16 ⁹ / ₁₆
h2	15 ³ / ₄
Hmax	32 ⁹ / ₁₆
L	58 ¹ / ₁₆
L1	56 ⁵ / ₁₆
L2	4 ⁵ / ₁₆
L3	47 ⁵ / ₈
PM1	1/4"
s	6xØ19
Trim	
Volumen	1/16

Weight	
Total weight	475.2 kg

Connections			
Suction nozzle		Discharge nozzle	
DN200		DN150	
PN16		PN10/16	
EN1092-2		EN1092-2	
C	1 ³ / ₁₆	C	1 ¹ / ₃₂
D	13 ⁹ / ₁₆	D	11 ¹ / ₄
d1	10 ¹ / ₂	d1	8 ⁵ / ₁₆
K	11 ⁵ / ₈	K	9 ⁷ / ₁₆
L	7 ⁷ / ₈	L	7 ⁷ / ₈
Z	1/2	Z	5 ⁵ / ₁₆

Note:
Weight and Dimensions of selected Hydrovar are NOT considered.
Please refer to additional datasheet.

Dimensions and weight without obligation

Project	Xylect-20182283	Created by		Last update	1/11/2025
Block	NSCF150-315/900/L46UCC4 E4	Created on	1/11/2025		