

NSCF200-315/150/L66UDC4

Technical data

Company name
Contact
Phone number
e-mail address

Operating data					
1	Pumpe type	Single head pump		Fluid	Water, pure
2	No. of pumps	1		Operating temperature at A	°F 39.2
3	Nominal flow	US g.p.m.	0	Max / Min Operating Temperature mech. Seal	°F 120 / -25
4	Nominal head	ft	0	pH-value at t A	7
5	Static head	ft	0	Density at t A	lb/ft ³ 62.4
6	Inlet pressure	psi	0	Kin. viscosity at t A	ft ² /s 1.689E-5
7	Environmental temperature	°F	68	Vapor pressure at t A	psi 14.5
8	Available system NPSH	ft	0	Altitude	0

Pump data					
9	Lubrication	Standard, Grease lubrication [Std]			
10	Execution	Standard coupling			
11	Design	Horizontal			
12	Operating speed	1164 rpm	Stages	1	
13	Suction nozzle	DN250 /	PN16 /	EN1092-2	
14	Discharge nozzle	DN200 /	PN16 /	EN1092-2	
15	Max. casing pressure	psi			
16	Max. working pressure	psi	19.7		
17	Impeller type	Radial impeller			
18	Head H(Q=0)	ft	45		
19	Max. shaft power	hp	19.3		
20	Pump weight	kg	515.9		
21	Total weight	lb	1,049.6		

		Impeller Ø		Flow		Head		Shaft power		Efficiency		NPSH 3%	
	Max.	inch	13 1/8		Max-	US g.p.m.	2608.3		hp		%		ft
	designed	inch	10 9/16		Min-	US g.p.m.	401.3						
	Min.	inch	10 9/16		Nominal	ft							
					at Qmax	ft	14.6						
					at Qmin	ft	44.4						

Materials						
Pump			Shaft Seal			
23	Volute Casing	Ductile Iron, EN-GJS-400-15, ASTM A536 40-60-18			Single mechanical seal, without shaft sleeve	
24	Impeller	Cast Iron, EN 1561 - GJL-200, ASTM Class 30			eMG12 - Ø48mm	BQ7EGG-WA
25	Casing Cover	Ductile Iron, EN-GJS-400-15, ASTM A536 40-60-18			Mechanical seal diameter	1 7/8 inch
26	Shaft	Stainless steel, 1.4057, AISI 431			1. Rotating ring	Carbon graphite resin impregnated
27	Wear ring	Stainless steel, 1.4301, AISI 304			2. Stationary ring	SiC, silicon carbide, sintered press.less
28	Impeller lock nut and washer	A4 (1.4401)			3. Secondary seal	Ethylene propylene rubber (EPDM)
29	Impeller key	Stainless steel, 1.4571, AISI 316Ti			4. Springs	CrNiMo - Steel
30	Fill and drain plugs	Galvanized carbon steel, EN 10277-3, AISI 1213 / 1215			5. Others	EPDM - WRAS
31	Bearing bracket	Cast Iron, EN 1561 - GJL-250, ASTM Class 35			Gaskets of the pump	Ethylene propylene rubber (EPDM)
32						
33						
34						
35						
36						
37						
38						
39						
40						
41						

Motor data				Coupling			
42	Manufacturer	Lowara		Manufacturer	Flender		
43	Specific design	IE3 3ph Surface Motor - Premium Efficiency		Series	Standard Coupling - N-EUPEX - Type B		
44	Type	3MAS 180 L B3 15 kW		Shaft diameter	Pump 1 5/8 inch	Motor 1 7/8 inch	
45	Rated power	20.115 hp	Rated current	31.3 A	Frame size	110	
46	Nominal speed	1164 rpm	Rated voltage	380 V	Spacer length	inch	3/16
47	Frame size	180 L	Service factor	1	Weight	lb	7.3
48	Weight	lb	276.9	Degree of protection	IP55	Coupling protection	GR.COUPLGUARD ES42-230-16 A4 3.7478 lb

Base plate			Remarks		
49	Name	BASEFRAME_NSC80-5_C00			
50	Weight	lb	245.8		

NSCF200-315/150/L66UDC4

Performance curve

Company name
Contact
Phone number
e-mail address

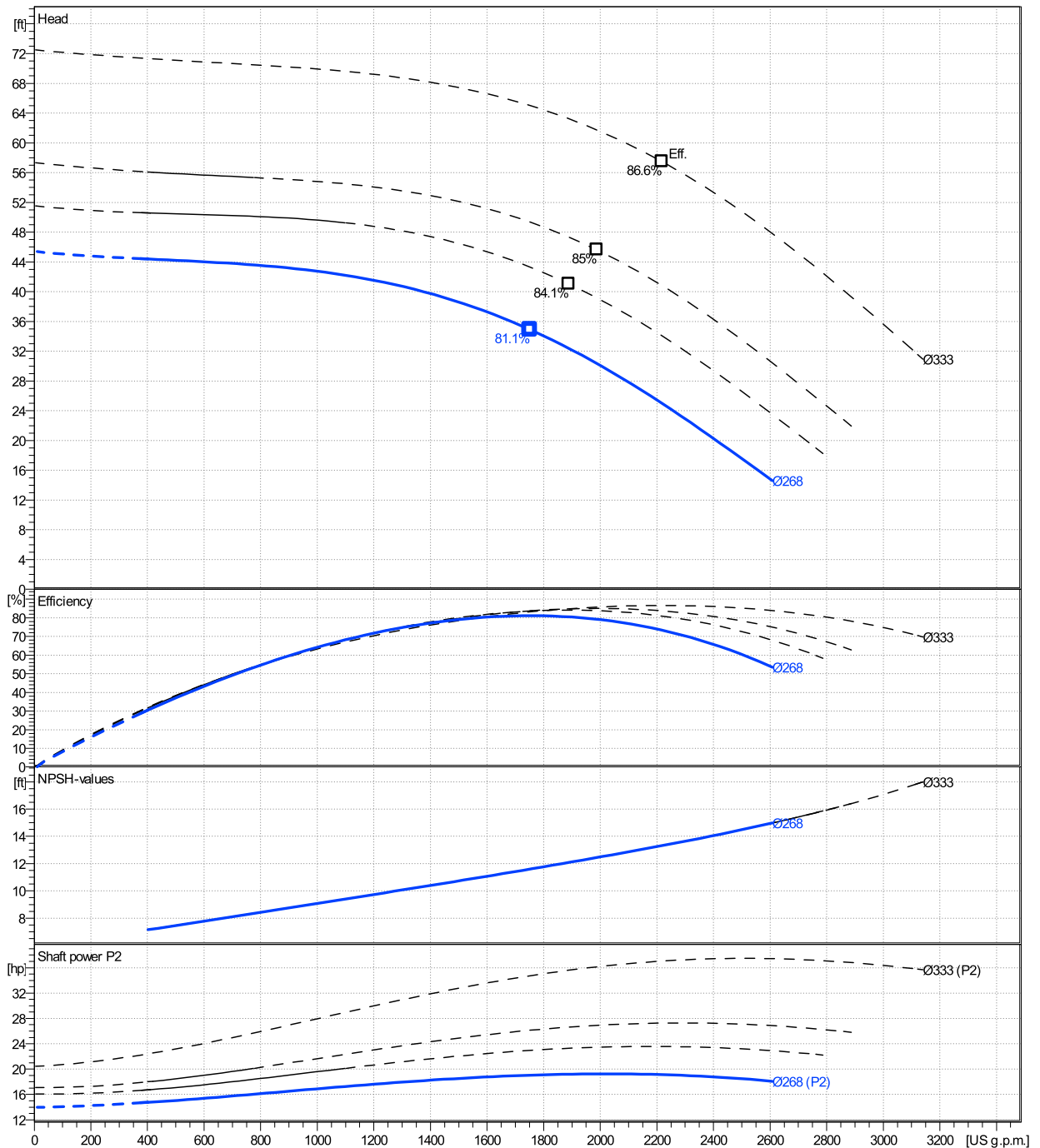
	Ø mm	Pump capacity Operating range η			Pump head η		Shaft power P2 η			Frequency Hz		
		Min. US g.p.m.	Max. US g.p.m.	Max. US g.p.m.	H(Q=0) ft	Max. ft	P2(Q=0) hp	Max. hp	Max. hp	Operating speed rpm		
actual	10 9/16	401	2610	1750	45.4	34.9		19.3	19	Nominal flow	US g.p.m.	0
Min.	0	/	/	1750	45.4	34.9		/	19	Nominal head	ft	0
Max.	13 1/8	/	/	2220	72.5	57.5		/	37.1	Inlet pressure	psi	0
										Static head	ft	0

Power datas referred to:

hydr. Performance acceptance acc. To EN ISO 9906 Class Grade 2B

Water, pure [100%]; 39.2°F; 62.4lb/ft³; 1.69E-5ft²/s

MEI: N.A - according to Ecodesign Directive 2009/125/EC and Regulation (EU) No.547/2012



NSCF200-315/150/L66UDC4

Dimensions

Company name
Contact
Phone number
e-mail address

Frame mounted
Standard coupling
3MAS 180 L B3 15 kW

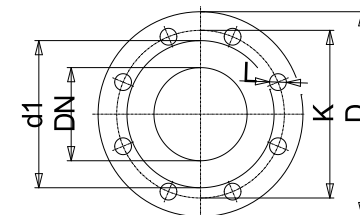
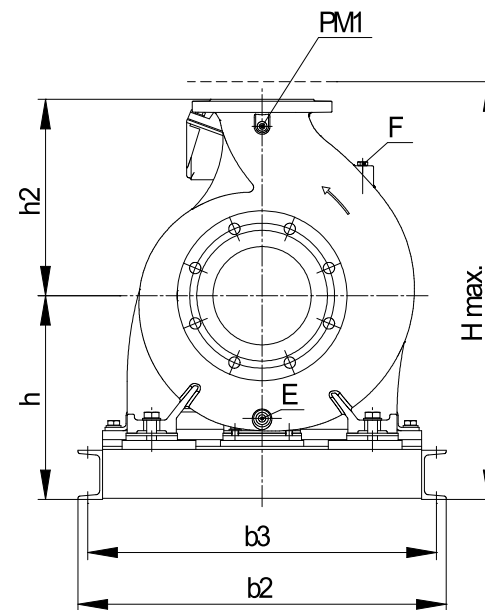
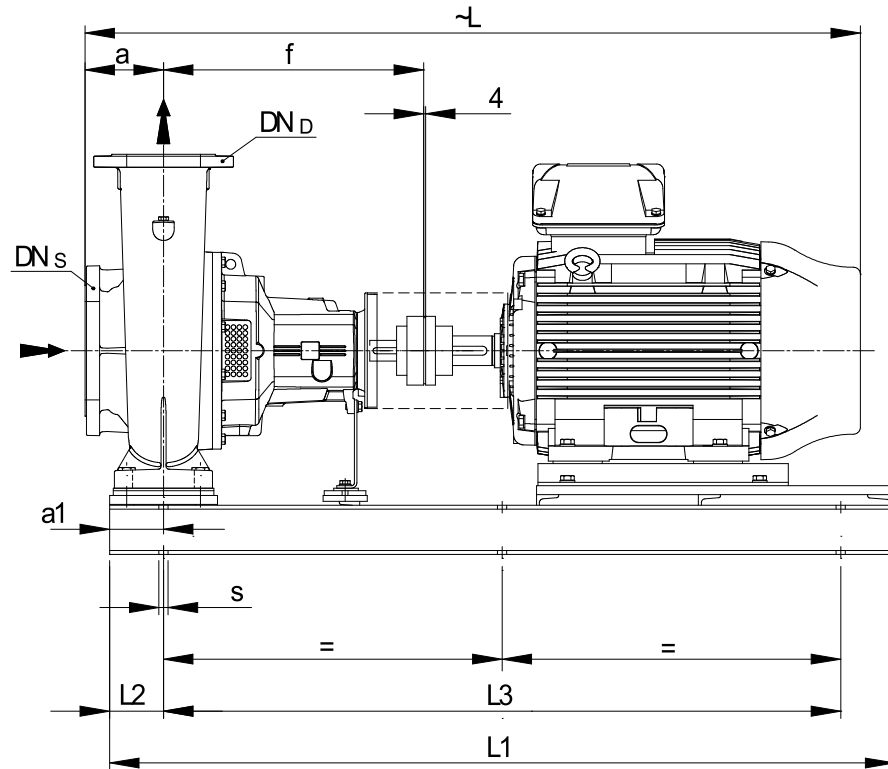
Electrical and dimensional data refer to IE3 motor

Dimensions [inch]

a	7 ¹ / ₁₆		
a1	4 ⁵ / ₁₆		
b2	26 ³ / ₈		
b3	24 ¹³ / ₁₆		
CTO			
DNd	7 ⁷ / ₈		
DNs	9 ¹³ / ₁₆		
E	1/2"		
F	-		
f	20 ⁷ / ₈		
Guard	8 ¹³ / ₁₆		
h	18 ¹ / ₈		
h2	17 ¹¹ / ₁₆		
Hmax	35 ¹³ / ₁₆		
L	55 ¹¹ / ₁₆		
L1	57 ¹ / ₁₆		
L2	4 ⁵ / ₁₆		
L3	48 ⁷ / ₁₆		
PM1	1/2"		
s	6xØ19		
Trim			
Volumen	1 ¹ / ₁₆		

Weight	
Total weight	476.1 kg

Connections			
Suction nozzle		Discharge nozzle	
DN250		DN200	
PN16		PN16	
EN1092-2		EN1092-2	
C	1 ¹ / ₄	C	1 ³ / ₁₆
D	15 ¹⁵ / ₁₆	D	13 ⁹ / ₁₆
d1	12 ⁹ / ₁₆	d1	10 ¹ / ₂
K	14	K	11 ⁵ / ₈
L	1 ¹ / ₈	L	7 ⁷ / ₈
z	1 ¹ / ₂	z	1 ¹ / ₂



Value C, D may vary from Standard

Note:
Weight and Dimensions of selected Hydrovar are NOT considered.
Please refer to additional datasheet.

Dimensions and weight without obligation

Project	Xylect-20182283	Created by		Last update	1/11/2025
Block	NSCF200-315/1100/L46UDC4 E4	Created on	1/11/2025		