

# NSCF32-250/40/P46PCS4

## Technical data

Company name  
Contact  
Phone number  
e-mail address

Operating data						
1	Pumpe type	Single head pump		Fluid	Water, pure	
2	No. of pumps	1		Operating temperature t A	°F	39.2
3	Nominal flow	US g.p.m.	0	Max / Min Operating Temperature mech. Seal	°F	120 / -25
4	Nominal head	ft	0	pH-value at t A		7
5	Static head	ft	0	Density at t A	lb/ft³	62.4
6	Inlet pressure	psi	0	Kin. viscosity at t A	ft²/s	1.689E-5
7	Environmental temperature	°F	68	Vapor pressure at t A	psi	14.5
8	Available system NPSH	ft	0	Altitude		0

Pump data										
9	Lubrication	Standard, Grease lubrication [Std]								
10	Execution	[F] = 4 poles motor unit with standard cuopling								
11	Design	Horizontal		Impeller Ø	Max.	inch	10 3/16			
12	Operating speed	1750 rpm	Stages		1	designed	inch	10 3/16		
13	Suction nozzle	DN 50	/		PN 16	/	EN1092-2	Min.	inch	8 7/8
14	Discharge nozzle	DN 32	/	PN 16	/	EN1092-2	Flow	Nominal US g.p.m.		
15	Max. casing pressure	psi						Max-	US g.p.m.	110.1
16	Max. working pressure	psi	48.1				Min-	US g.p.m.	39.6	
17	Impeller type	Radial impeller		Head	Nominal	ft				
18	Head H(Q=0)	ft	110		at Qmax	ft	60.8			
19	Max. shaft power	hp	4.3		at Qmin	ft	108.9			
20	Pump weight	kg	130.1	Shaft power	hp					
21	Total weight	lb	322.3	Efficiency	%					
				NPSH 3%	ft					

Materials					
Pump			Shaft Seal		
23	Volute Casing	Cast Iron		Single mechanical seal, without shaft sleeve	
24	Casing Cover	Cast Iron		eMG12 - Ø28mm	BQ7EGG-WA
25	Impeller	Fabricated Stainless Steel		Mechanical seal diameter	1 1/8 inch
26	Shaft	Stainless steel		1. Rotating ring	Carbon graphite resin impregnated
27	Wear ring	Stainless steel		2. Stationary ring	SiC, silicon carbide, sintered press. less
28	Impeller lock nut and washer	Stainless steel		3. Secondary seal	Ethylene propylene rubber (EPDM)
29	Impeller key	Stainless steel		4. Springs	CrNiMo - Steel
30	Fill and drain plugs	Stainless steel		5. Others	EPDM - WRAS
31				Gaskets of the pump	Ethylene propylene rubber (EPDM)
32					
33					
34					
35					
36					
37					
38					
39					
40					
41					

Motor data				Electrical and dimensional data refer to IE3 motor		Coupling	
42	Manufacturer	Lowara		Manufacturer	Flender		
43	Specific design	IE3 3ph Surface Motor - Premium Efficiency		Series	Standard Coupling - N-EUPEX - Type B		
44	Type	PLM 112 B3 4 kW		Shaft diameter	Pump 15/16 inch	Motor 1 1/8 inch	
45	Rated power	5.3641 hp	Rated current	8.52 A	Frame size	68	
46	Nominal speed	1740 rpm	Rated voltage	380 V	Spacer length	inch	1/8
47	Frame size	112	Service factor	1	Weight	lb 1.2	
48	Weight	lb 126.8	Degree of protection	IP55	Coupling protection	COUPLGUARD 175x102PNTD	0.5291 lb

Base plate			Remarks	
49	Name	BASE 4A 1000X450 BLU		
50	Weight	lb	63.7	

# NSCF32-250/40/P46PCS4

## Performance curve

Company name  
Contact  
Phone number  
e-mail address

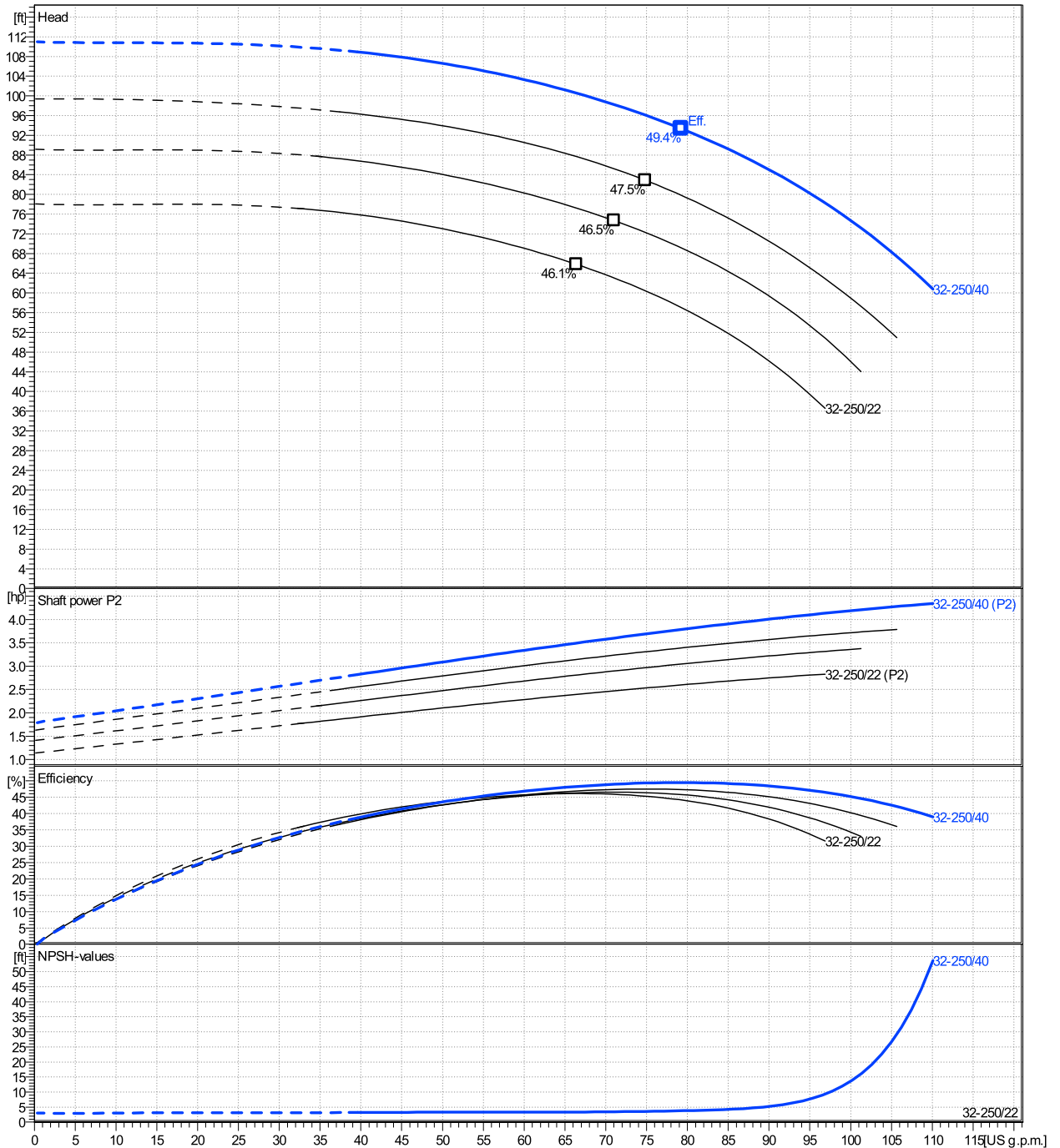
	Ø mm	Pump capacity			Pump head		Shaft power P2			Frequency	Hz	
		Operating range Min. US g.p.m.	Max. US g.p.m.	η Max. US g.p.m.	H(Q=0) ft	η Max. ft	P2(Q=0) hp	Max. hp	η Max. hp	Operating speed	rpm	
actual	10 3/16	39.6	110	79.2	111	93.4		4.34	3.78	Nominal flow	US g.p.m.	0
Min.	0	/	/	66.4	78.1	65.8		/	2.4	Nominal head	ft	0
Max.	10 3/16	/	/	79.2	111	93.4		/	3.78	Inlet pressure	psi	0
										Static head	ft	0

**Power datas referred to:**

hydr. Performance acceptance acc. To EN ISO 9906 Class Grade 3B

Water, pure [100%] ; 39.2°F; 62.4lb/ft³; 1.69E-5ft²/s

MEI: N.A - according to Ecodesign Directive 2009/125/EC and Regulation (EU) No.547/2012



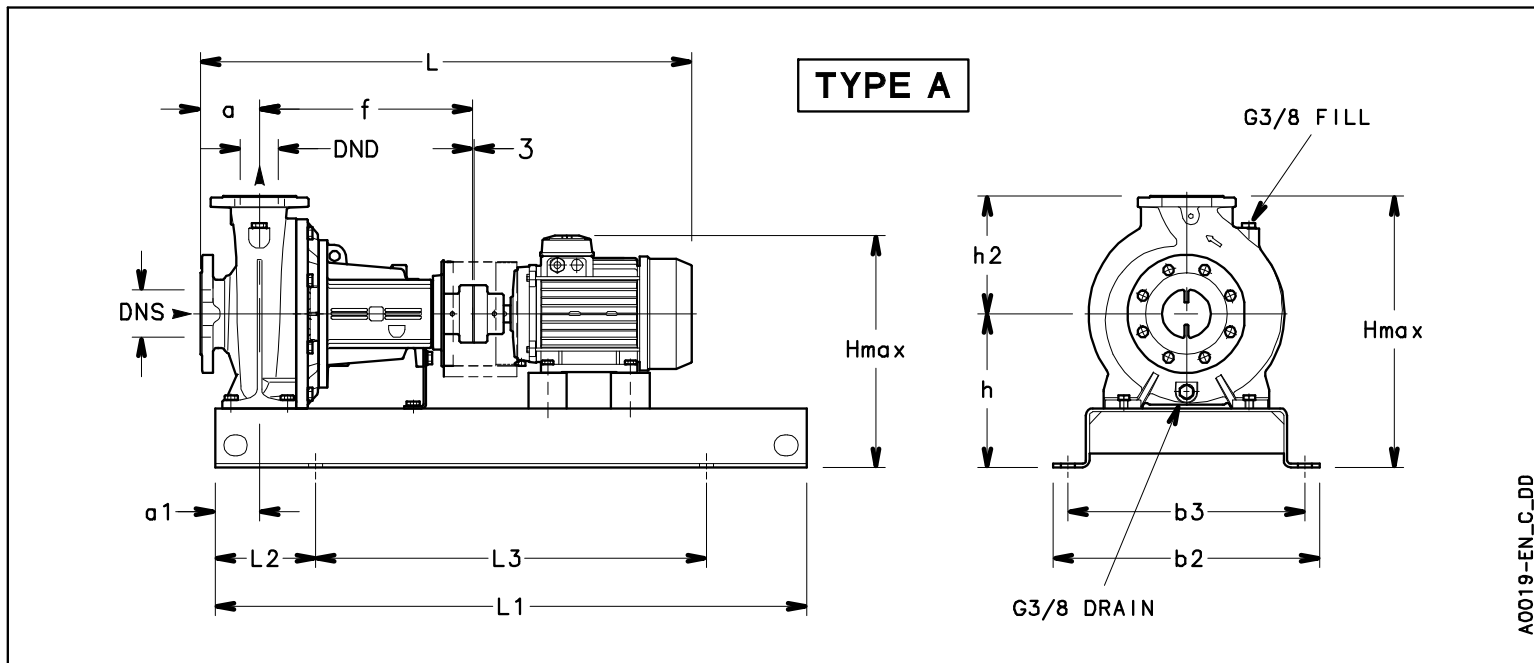
**NSCF32-250/40/P46PCS4**

**Dimensions**

Company name  
Contact  
Phone number  
e-mail address

Frame mounted  
[F] = 4 poles motor unit with standard coupling  
PLM 112 B3 4 kW

Electrical and dimensional data refer to IE3 motor



**Dimensions [ inch ]**

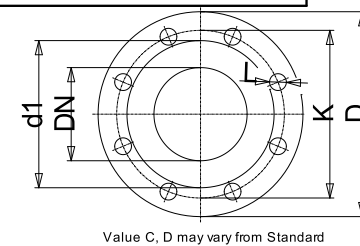
a	3 <sup>15</sup> / <sub>16</sub>		
a1	2 <sup>15</sup> / <sub>16</sub>		
AD	6 <sup>5</sup> / <sub>8</sub>		
b2	17 <sup>11</sup> / <sub>16</sub>		
b3	15 <sup>3</sup> / <sub>4</sub>		
DND	1 <sup>1</sup> / <sub>4</sub>		
DNS	1 <sup>15</sup> / <sub>16</sub>		
f	14 <sup>3</sup> / <sub>16</sub>		
Guard	4 <sup>7</sup> / <sub>16</sub>		
h	11 <sup>1</sup> / <sub>32</sub>		
h2	8 <sup>7</sup> / <sub>8</sub>		
Hmax	19 <sup>7</sup> / <sub>8</sub>		
L	36 <sup>1</sup> / <sub>4</sub>		
L1	39 <sup>3</sup> / <sub>8</sub>		
L2	6 <sup>11</sup> / <sub>16</sub>		
L3	26		
s	4xØ24		
Type	A		
Volumen	1 <sup>1</sup> / <sub>64</sub>		
x	1 <sup>1</sup> / <sub>8</sub>		

**Weight**

Total weight	146.18 kg
--------------	-----------

**Connections**

<b>Suction nozzle</b>		<b>Discharge nozzle</b>	
DN 50		DN 32	
PN 16		PN 16	
EN1092-2		EN1092-2	
C	1 <sup>3</sup> / <sub>16</sub>	C	1 <sup>1</sup> / <sub>16</sub>
D	6 <sup>1</sup> / <sub>2</sub>	D	5 <sup>1</sup> / <sub>2</sub>
df	3 <sup>7</sup> / <sub>8</sub>	df	3
DN	1 <sup>15</sup> / <sub>16</sub>	DN	1 <sup>1</sup> / <sub>4</sub>
K	4 <sup>15</sup> / <sub>16</sub>	K	3 <sup>15</sup> / <sub>16</sub>
L	4 x 19	L	4 x 19



Value C, D may vary from Standard

Note:  
Weight and Dimensions of selected Hydrovar are NOT considered.  
Please refer to additional datasheet.

**Dimensions and weight without obligation**

Project	Xylect-20182283	Created by		Last update	1/11/2025
Block	NSCF32-250/220/L26UCS4	Created on	1/11/2025		