

NSCF40-125/07/X46RCS4

Technical data

Company name
Contact
Phone number
e-mail address

Operating data					
1	Pumpe type	Single head pump		Fluid	Water, pure
2	No. of pumps	1		Operating temperature t A	°F 39.2
3	Nominal flow	US g.p.m.	0	Max / Min Operating Temperature mech. Seal	°F 120 / -25
4	Nominal head	ft	0	pH-value at t A	7
5	Static head	ft	0	Density at t A	lb/ft³ 62.4
6	Inlet pressure	psi	0	Kin. viscosity at t A	ft²/s 1.689E-5
7	Environmental temperature	°F	68	Vapor pressure at t A	psi 14.5
8	Available system NPSH	ft	0	Altitude	0

Pump data					
9	Lubrication	Standard, Grease lubrication [Std]			
10	Execution	[F] = 4 poles motor unit with standard cuopling			
11	Design	Horizontal		Impeller Ø	Max. inch 5 5/16
12	Operating speed	1750 rpm	Stages 1		designed inch 5 1/8
13	Suction nozzle	DN 65 /	PN 16 /		EN1092-2
14	Discharge nozzle	DN 40 /	PN 16 /	EN1092-2	Flow
15	Max. casing pressure	psi			Nominal US g.p.m.
16	Max. working pressure	psi	12.1		Max- US g.p.m. 147.5
17	Impeller type	Radial impeller		Head	Min- US g.p.m. 34.8
18	Head H(Q=0)	ft	28		Nominal ft
19	Max. shaft power	hp	.9		at Qmax ft 16
20	Pump weight	kg	68.3	at Qmin ft 27.7	Shaft power hp
21	Total weight	lb	94.2		Efficiency %
					NPSH 3% ft

Materials					
22		Pump		Shaft Seal	
23	Volute Casing	Cast Iron		Single mechanical seal, without shaft sleeve	
24	Casing Cover	Cast Iron		eMG12 - Ø22mm	BQ7EGG-WA
25	Impeller	Fabricated Stainless Steel		Mechanical seal diameter	7/8 inch
26	Shaft	Stainless steel		1. Rotating ring	Carbon graphite resin impregnated
27	Wear ring	Stainless steel		2. Stationary ring	SiC, silicon carbide, sintered press. less
28	Impeller lock nut and washer	Stainless steel		3. Secondary seal	Ethylene propylene rubber (EPDM)
29	Impeller key	Stainless steel		4. Springs	CrNiMo - Steel
30	Fill and drain plugs	Stainless steel		5. Others	EPDM - WRAS
31				Gaskets of the pump	Ethylene propylene rubber (EPDM)
32					
33					
34					
35					
36					
37					
38					
39					
40					
41					

Motor data				Coupling		
42	Manufacturer	Xylem		Manufacturer	Flender	
43	Specific design	IE3 3ph Surface Motor - Premium Efficiency		Series	Standard Coupling - N-EUPEX - Type B	
44	Type	LLM480B3/307		Shaft diameter	Pump 15/16 inch	Motor 3/4 inch
45	Rated power	1.0058 hp	Rated current 2.6 A	Frame size	68	
46	Nominal speed	1735 rpm	Rated voltage 265 V	Spacer length	inch 1/8	
47	Frame size	80	Service factor 1	Weight	lb 1.2	
48	Weight	lb 24.3	Degree of protection IP55	Coupling protection	COUPLGUARD 160x92PNTD	0.44092 lb

Base plate			Remarks			
49	Name	FRAME - N/A				
50	Weight	lb	0.0			

NSCF40-125/07/X46RCS4

Performance curve

Company name
Contact
Phone number
e-mail address

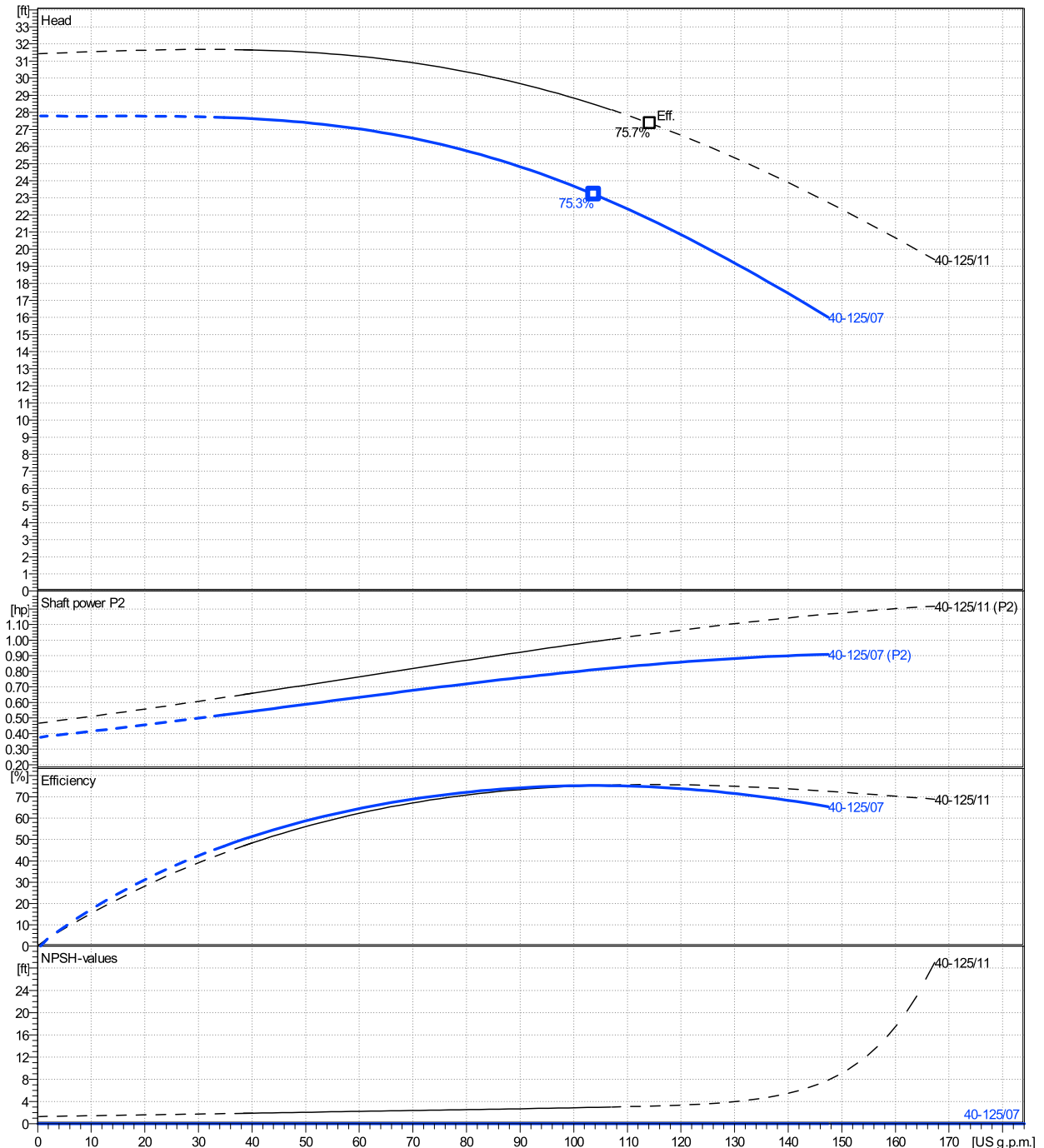
	Ø mm	Pump capacity			Pump head		Shaft power P2			Frequency	Hz	
		Operating range Min. US g.p.m.	Max. US g.p.m.	η Max. US g.p.m.	H(Q=0) ft	η Max. ft	P2(Q=0) hp	Max. hp	η Max. hp	Operating speed	rpm	
actual	5 1/8	34.8	147	104	27.8	23.2	0.909	0.81	Nominal flow	US g.p.m.	0	
Min.	0	/	/	104	27.8	23.2	/	0.81	Nominal head	ft	0	
Max.	5 5/16	/	/	114	31.4	27.4	/	1.04	Inlet pressure	psi	0	
									Static head	ft	0	

Power datas referred to:

hydr. Performance acceptance acc. To EN ISO 9906 Class Grade 3B

Water, pure [100%] ; 39.2°F; 62.4lb/ft³; 1.69E-5ft²/s

MEI: N.A - according to Ecodesign Directive 2009/125/EC and Regulation (EU) No.547/2012

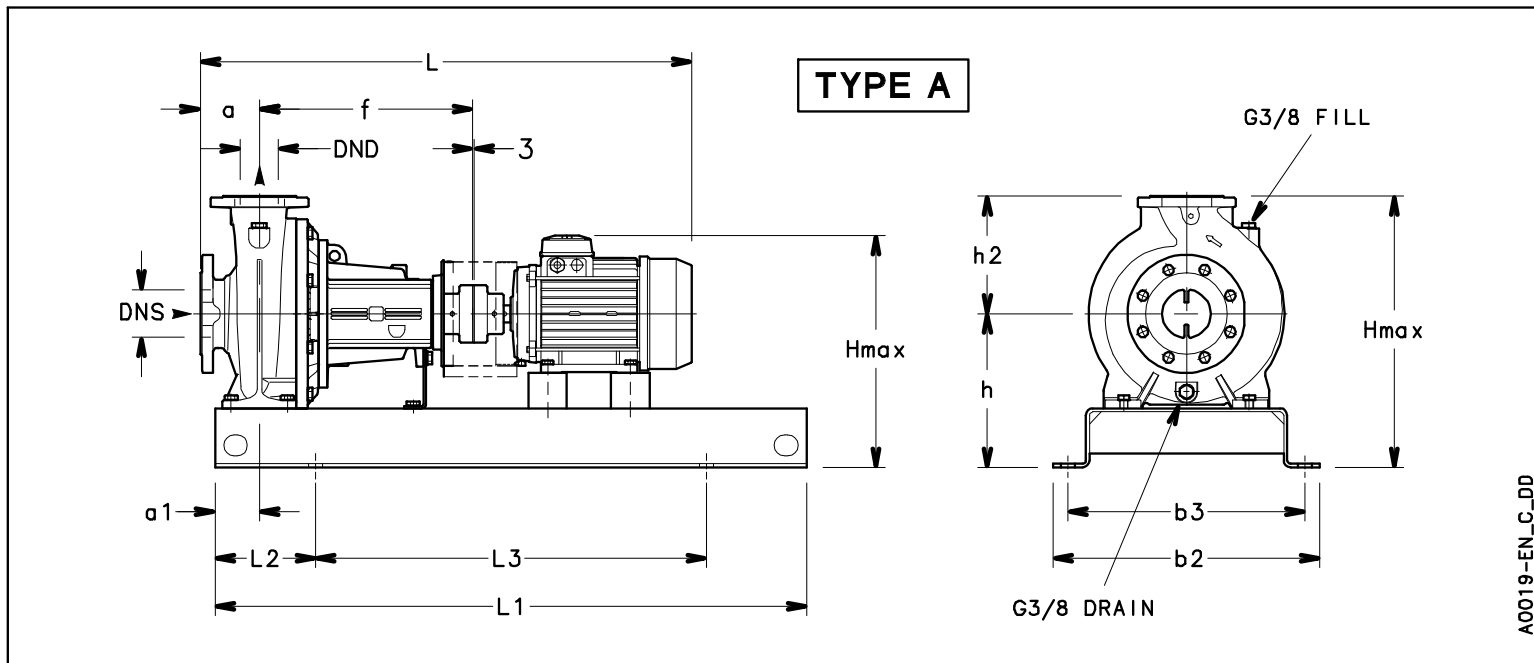


NSCF40-125/07/X46RCS4

Dimensions

Company name
Contact
Phone number
e-mail address

Frame mounted
[F] = 4 poles motor unit with standard coupling
LLM480B3/307

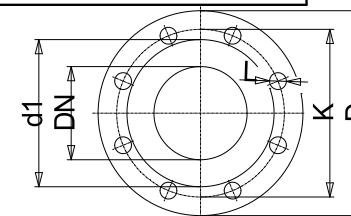


Dimensions [inch]

a	3 ¹ / ₈		
a1			
AD	5 ¹ / ₂		
b2			
b3			
DND	1 ⁹ / ₁₆		
DNS	2 ⁹ / ₁₆		
f	14 ³ / ₁₆		
Guard	3 ¹¹ / ₁₆		
h	8 ³ / ₈		
h2	5 ¹ / ₂		
Hmax	13 ⁷ / ₈		
L	28 ¹ / ₈		
L1			
L2			
L3			
s	on request		
Type	A		
Volumen			
x	1 ¹ / ₈		

Weight	
Total weight	42.74 kg

Connections			
Suction nozzle		Discharge nozzle	
DN 65		DN 40	
PN 16		PN 16	
EN1092-2		EN1092-2	
C	1 ³ / ₁₆	C	1 ¹ / ₁₆
D	7 ⁵ / ₁₆	D	5 ⁷ / ₈
df	4 ⁵ / ₈	df	3 ⁵ / ₁₆
DN	2 ⁹ / ₁₆	DN	1 ⁹ / ₁₆
K	5 ¹¹ / ₁₆	K	4 ⁵ / ₁₆
L	4 x 19	L	4 x 19



Value C, D may vary from Standard

Note:
Weight and Dimensions of selected Hydrovar are NOT considered.
Please refer to additional datasheet.

Dimensions and weight without obligation

Project	Xylect-20182283	Created by		Last update	1/11/2025
Block	NSCF40-125/75/P26PCS4	Created on	1/11/2025		