

# NSCF40-160/11/P46PCS4

## Technical data

Company name  
Contact  
Phone number  
e-mail address

Operating data				
1	Pumpe type	Single head pump	Fluid	Water, pure
2	No. of pumps	1	Operating temperature at A	°F 39.2
3	Nominal flow	US g.p.m. 0	Max / Min Operating Temperature mech. Seal	°F 120 / -25
4	Nominal head	ft 0	pH-value at t A	7
5	Static head	ft 0	Density at t A	lb/ft³ 62.4
6	Inlet pressure	psi 0	Kin. viscosity at t A	ft²/s 1.689E-5
7	Environmental temperature	°F 68	Vapor pressure at t A	psi 14.5
8	Available system NPSH	ft 0	Altitude	0

Pump data				
9	Lubrication	Standard, Grease lubrication [Std]		
10	Execution	[F] = 4 poles motor unit with standard coupling		
11	Design	Horizontal	Impeller Ø	Max. inch 6 7/16
12	Operating speed	1750 rpm	Stages	1
13	Suction nozzle	DN 65 / PN 16 / EN1092-2	designed	inch 5 1/2
14	Discharge nozzle	DN 40 / PN 16 / EN1092-2	Min.	inch 5
15	Max. casing pressure	psi	Flow	Nominal US g.p.m.
16	Max. working pressure	psi 13.8	Max-	US g.p.m. 145.3
17	Impeller type	Radial impeller	Min-	US g.p.m. 29.9
18	Head H(Q=0)	ft 32	Head	Nominal ft
19	Max. shaft power	hp 1.2	at Qmax	ft 20
20	Pump weight	kg 70.5	at Qmin	ft 32.5
21	Total weight	lb 161.1	Shaft power	hp
			Efficiency	%
			NPSH 3%	ft

Materials				
22		<b>Pump</b>	<b>Shaft Seal</b>	
23	Volute Casing	Cast Iron	Single mechanical seal, without shaft sleeve	
24	Casing Cover	Cast Iron	eMG12 - Ø22mm	BQ7EGG-WA
25	Impeller	Fabricated Stainless Steel	Mechanical seal diameter	7/8 inch
26	Shaft	Stainless steel	1. Rotating ring	Carbon graphite resin impregnated
27	Wear ring	Stainless steel	2. Stationary ring	SiC, silicon carbide, sintered press.less
28	Impeller lock nut and washer	Stainless steel	3. Secondary seal	Ethylene propylene rubber (EPDM)
29	Impeller key	Stainless steel	4. Springs	CrNiMo - Steel
30	Fill and drain plugs	Stainless steel	5. Others	EPDM - WRAS
31			Gaskets of the pump	Ethylene propylene rubber (EPDM)
32				
33				
34				
35				
36				
37				
38				
39				
40				
41				

Motor data				Electrical and dimensional data refer to IE3 motor		Coupling	
42	Manufacturer	Lowara		Manufacturer	Flender		
43	Specific design	IE3 3ph Surface Motor - Premium Efficiency		Series	Standard Coupling - N-EUPEX - Type B		
44	Type	PLM 90 B3 1,1 kW		Shaft diameter	Pump 15/16 inch	Motor 15/16 inch	
45	Rated power	1.4751 hp	Rated current	4.61 A	Frame size	68	
46	Nominal speed	1740 rpm	Rated voltage	220 V	Spacer length	inch	1/8
47	Frame size	90	Service factor	1	Weight	lb 1.2	
48	Weight	lb 36.6	Degree of protection	IP55	Coupling protection	COUPLGUARD 160x102PNTD	0.48501 lb

Base plate			Remarks	
49	Name	BASE 3A 900X390 BLU		
50	Weight	lb	52.2	

Project	Xylect-20182283	Created by		Last update	1/11/2025
Block	NSCF40-160/110/P26PCS4	Created on	1/11/2025		

# NSCF40-160/11/P46PCS4

## Performance curve

Company name  
Contact  
Phone number  
e-mail address

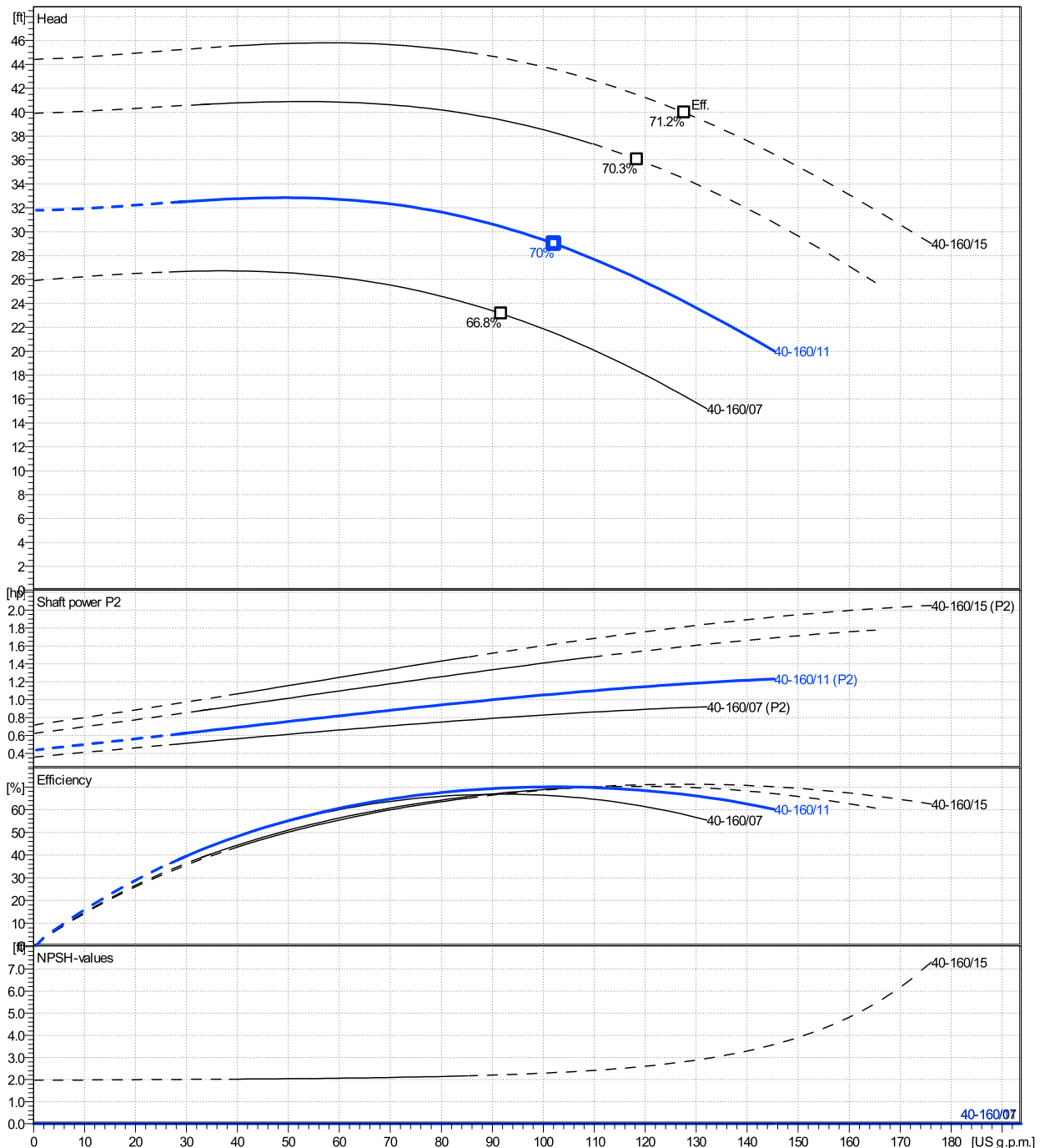
	Ø mm	Pump capacity Operating range η			Pump head η		Shaft power P2 η			Frequency	Hz	
		Min. US g.p.m.	Max. US g.p.m.	Max. US g.p.m.	H(Q=0) ft	Max. ft	P2(Q=0) hp	Max. hp	Max. hp	Operating speed	rpm	
actual	5 1/2	29.9	145	102	31.8	29	1.23	1.06			60	1750
Min.	0	/	/	91.8	25.9	23.1	/	0.798				0
Max.	6 7/16	/	/	128	44.4	40	/	1.81				0

**Power datas referred to:**

hydr. Performance acceptance acc. To EN ISO 9906 Class Grade 3B

Water, pure [100%] ; 39.2°F; 62.4lb/ft³; 1.69E-5ft²/s

MEI: N.A - according to Ecodesign Directive 2009/125/EC and Regulation (EU) No.547/2012



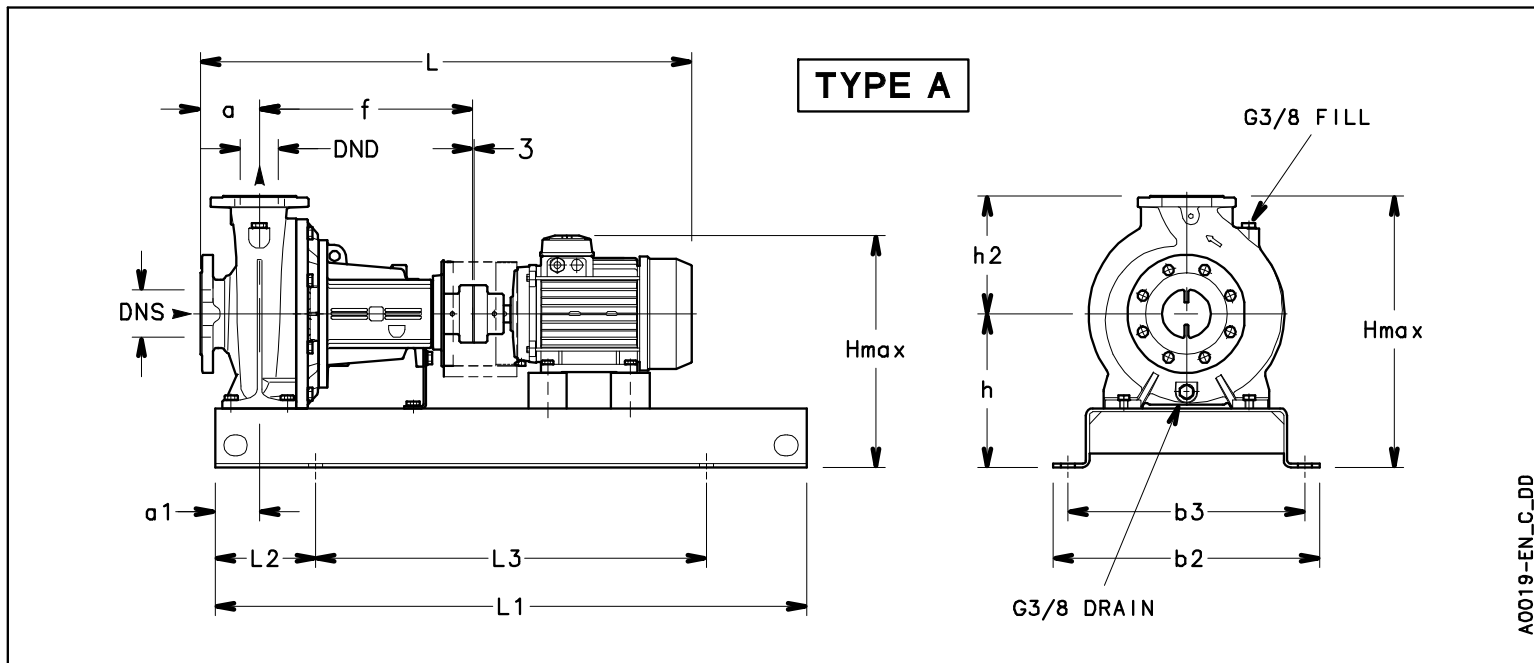
# NSCF40-160/11/P46PCS4

## Dimensions

Company name  
Contact  
Phone number  
e-mail address

Frame mounted  
[F] = 4 poles motor unit with standard coupling  
PLM 90 B3 1,1 kW

Electrical and dimensional data refer to IE3 motor



### Dimensions [ inch ]

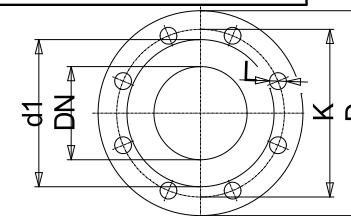
a	3 <sup>1</sup> / <sub>8</sub>
a1	2 <sup>3</sup> / <sub>8</sub>
AD	5 <sup>1</sup> / <sub>4</sub>
b2	15 <sup>3</sup> / <sub>8</sub>
b3	13 <sup>3</sup> / <sub>4</sub>
DND	1 <sup>9</sup> / <sub>16</sub>
DNS	2 <sup>9</sup> / <sub>16</sub>
f	14 <sup>3</sup> / <sub>16</sub>
Guard	4 <sup>1</sup> / <sub>16</sub>
h	9 <sup>1</sup> / <sub>8</sub>
h2	6 <sup>5</sup> / <sub>16</sub>
Hmax	15 <sup>7</sup> / <sub>16</sub>
L	31 <sup>1</sup> / <sub>8</sub>
L1	35 <sup>7</sup> / <sub>16</sub>
L2	5 <sup>7</sup> / <sub>8</sub>
L3	23 <sup>9</sup> / <sub>8</sub>
s	4xØ19
Type	A
Volumen	1 <sup>1</sup> / <sub>128</sub>
x	1 <sup>1</sup> / <sub>8</sub>

### Weight

Total weight	73.06 kg
--------------	----------

### Connections

Suction nozzle		Discharge nozzle	
DN 65		DN 40	
PN 16		PN 16	
EN1092-2		EN1092-2	
C	1 <sup>3</sup> / <sub>16</sub>	C	1 <sup>1</sup> / <sub>16</sub>
D	7 <sup>5</sup> / <sub>16</sub>	D	5 <sup>7</sup> / <sub>8</sub>
df	4 <sup>5</sup> / <sub>8</sub>	df	3 <sup>5</sup> / <sub>16</sub>
DN	2 <sup>9</sup> / <sub>16</sub>	DN	1 <sup>9</sup> / <sub>16</sub>
K	5 <sup>11</sup> / <sub>16</sub>	K	4 <sup>5</sup> / <sub>16</sub>
L	4 x 19	L	4 x 19



Value C, D may vary from Standard

Note:  
Weight and Dimensions of selected Hydrovar are NOT considered.  
Please refer to additional datasheet.

### Dimensions and weight without obligation

Project	Xylect-20182283	Created by		Last update	1/11/2025
Block	NSCF40-160/110/P26PCS4	Created on	1/11/2025		