

NSCF50-315/110/P46PCC4

Technical data

Company name
Contact
Phone number
e-mail address

Operating data					
1	Pumpe type	Single head pump		Fluid	Water, pure
2	No. of pumps	1		Operating temperature at t A	°F 39.2
3	Nominal flow	US g.p.m.	0	Max / Min Operating Temperature mech. Seal	°F 120 / -25
4	Nominal head	ft	0	pH-value at t A	7
5	Static head	ft	0	Density at t A	lb/ft³ 62.4
6	Inlet pressure	psi	0	Kin. viscosity at t A	ft²/s 1.689E-5
7	Environmental temperature	°F	68	Vapor pressure at t A	psi 14.5
8	Available system NPSH	ft	0	Altitude	0

Pump data					
9	Lubrication	Standard, Grease lubrication [Std]			
10	Execution	Standard coupling			
11	Design	Horizontal			
12	Operating speed	1758 rpm	Stages	1	
13	Suction nozzle	DN65	/	PN10/16	/ EN1092-2
14	Discharge nozzle	DN50	/	PN10/16	/ EN1092-2
15	Max. casing pressure	psi			
16	Max. working pressure	psi	60.8		
17	Impeller type	Radial impeller			
18	Head H(Q=0)	ft	140		
19	Max. shaft power	hp	13.8		
20	Pump weight	kg	207.2		
21	Total weight	lb	729.5		

	Impeller Ø	Max.	inch	12 11/16
		designed	inch	11 5/16
		Min.	inch	10 1/4
		Nominal US g.p.m.		
	Flow	Max-	US g.p.m.	326.3
		Min-	US g.p.m.	49.1
	Head	Nominal		
		at Qmax	ft	93.3
		at Qmin	ft	139
		Shaft power	hp	
		Efficiency	%	
		NPSH 3%	ft	

Materials						
	Pump			Shaft Seal		
23	Volute Casing	Cast Iron, EN 1561 - GJL-250, ASTM Class 35			Single mechanical seal, without shaft sleeve	
24	Impeller	Cast Iron, EN 1561 - GJL-200, ASTM Class 30			eMG12 - Ø38mm	BQ7EGG-WA
25	Casing Cover	Cast Iron, EN 1561 - GJL-250, ASTM Class 35			Mechanical seal diameter	1 1/2 inch
26	Shaft	Stainless steel, 1.4057, AISI 431			1. Rotating ring	Carbon graphite resin impregnated
27	Wear ring	Stainless steel, 1.4301, AISI 304			2. Stationary ring	SiC, silicon carbide, sintered press.less
28	Impeller lock nut and washer	A4 (1.4401)			3. Secondary seal	Ethylene propylene rubber (EPDM)
29	Impeller key	Stainless steel, 1.4571, AISI 316Ti			4. Springs	CrNiMo - Steel
30	Fill and drain plugs	Galvanized carbon steel, EN 10277-3, AISI 1213 / 1215			5. Others	EPDM - WRAS
31	Bearing bracket	Cast Iron, EN 1561 - GJL-250, ASTM Class 35			Gaskets of the pump	Ethylene propylene rubber (EPDM)
32						
33						
34						
35						
36						
37						
38						
39						
40						
41						

Motor data				Electrical and dimensional data refer to IE3 motor		Coupling	
42	Manufacturer	Lowara		Manufacturer	Flender		
43	Specific design	IE3 3ph Surface Motor - Premium Efficiency		Series	Standard Coupling - N-EUPEX - Type B		
44	Type	PLM 160 B3 11 kW		Shaft diameter	Pump 1 1/4 inch	Motor 1 5/8 inch	
45	Rated power	14.751 hp	Rated current	38.3 A	Frame size	95	
46	Nominal speed	1758 rpm	Rated voltage	220 V	Spacer length	inch	3/16
47	Frame size	160	Service factor	1	Weight	lb	4.9
48	Weight	lb	272.0	Degree of protection	IP55	Coupling protection	GR.COUPLGUARD ES32-190-16 A4 3.9683 lb

Base plate			Remarks	
49	Name	BASEFRAME_NSC80-2_C00		
50	Weight	lb	241.4	

Project	Xylect-20182283	Created by		Last update	1/11/2025
Block	NSCF50-315/150/P46PCC4	Created on	1/11/2025		

NSCF50-315/110/P46PCC4

Performance curve

Company name
Contact
Phone number
e-mail address

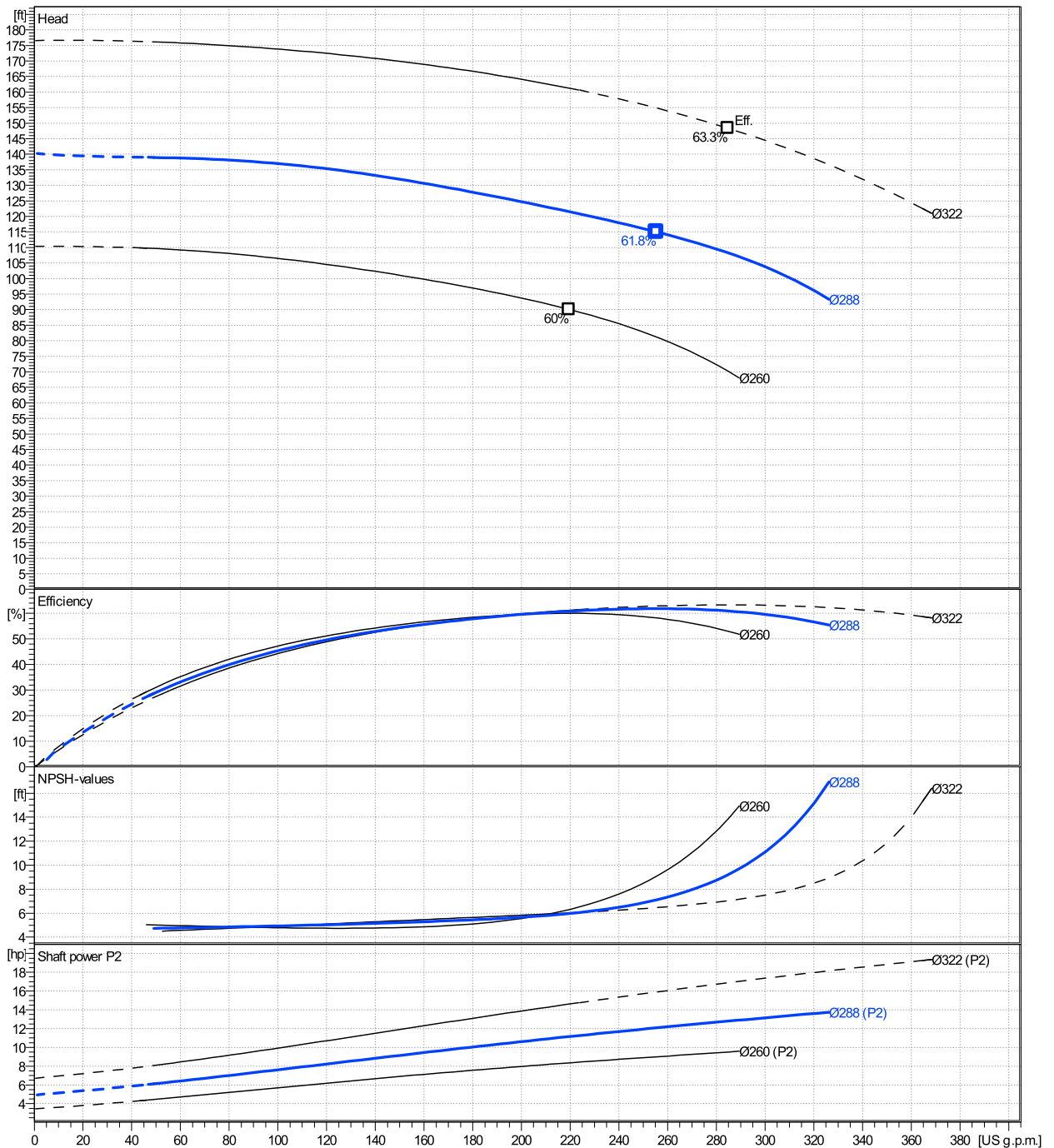
	Ø mm	Pump capacity η			Pump head η		Shaft power P2 η			Frequency Hz		
		Min. US g.p.m.	Max. US g.p.m.	Max. US g.p.m.	H(Q=0) ft	Max. ft	P2(Q=0) hp	Max. hp	Max. hp	Operating speed rpm	1758	
actual	11 5/16	49.1	326	255	140	115		13.8	12.1	Nominal flow	US g.p.m.	0
Min.	0	/	/	220	110	90.1		/	8.35	Nominal head	ft	0
Max.	12 11/16	/	/	285	177	148		/	16.9	Inlet pressure	psi	0
										Static head	ft	0

Power datas referred to:

hydr. Performance acceptance acc. To EN ISO 9906 Class Grade 3B

Water, pure [100%] ; 39.2°F; 62.4lb/ft³; 1.69E-5ft²/s

MEI: 0,65 - according to Ecodesign Directive 2009/125/EC and Regulation (EU) No.547/2012



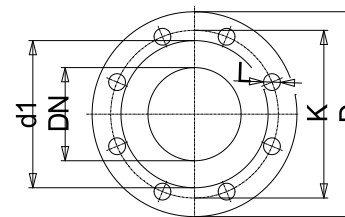
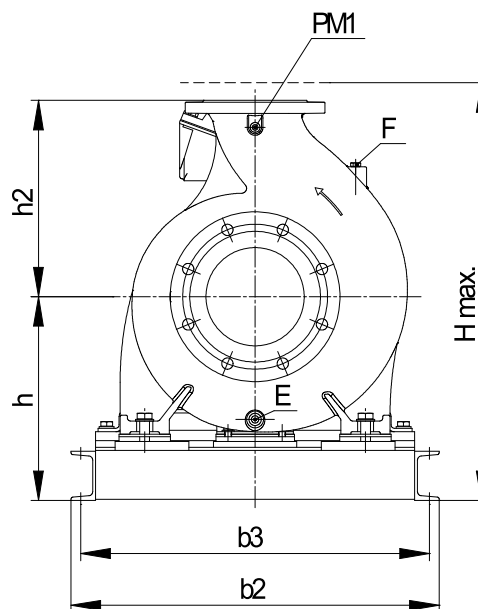
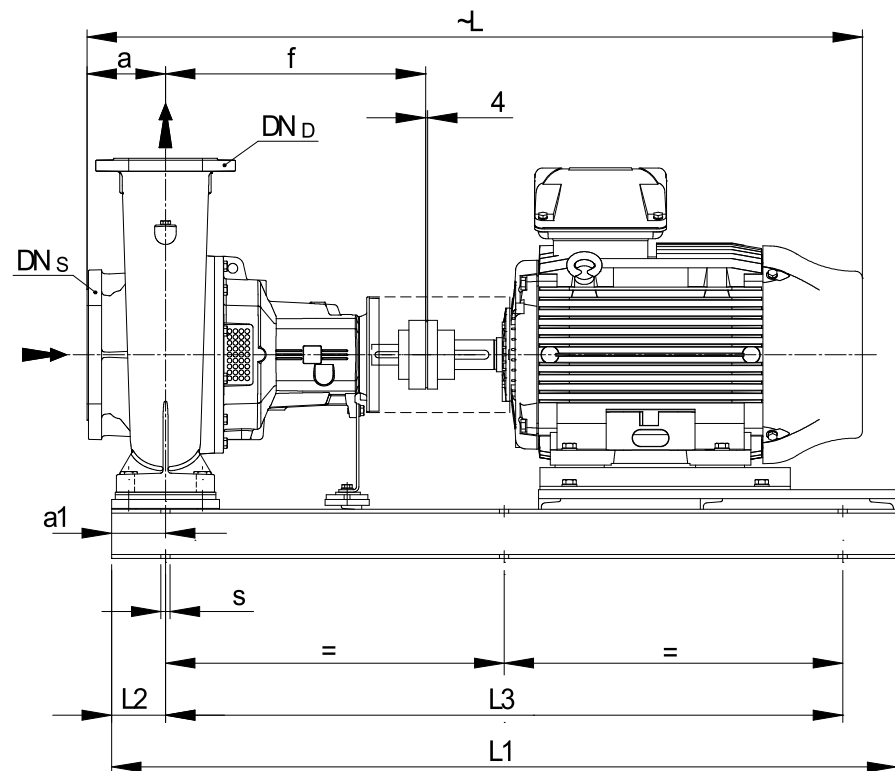
NSCF50-315/110/P46PCC4

Dimensions

Company name
Contact
Phone number
e-mail address

Frame mounted
Standard coupling
PLM 160 B3 11 kW

Electrical and dimensional data refer to IE3 motor



Value C, D may vary from Standard

Dimensions		[inch]	
a	4 ¹⁵ / ₁₆		
a1	4 ⁵ / ₁₆		
b2	26 ³ / ₈		
b3	24 ¹³ / ₁₆		
CTO			
DNd	1 ¹⁵ / ₁₆		
DNs	2 ⁹ / ₁₆		
E	3/8"		
F	3/8"		
f	18 ¹ / ₂		
Guard	7 ⁵ / ₈		
h	14 ³ / ₈		
h2	11 ¹ / ₃₂		
Hmax	25 ³ / ₈		
L	47 ³ / ₈		
L1	52 ³ / ₈		
L2	4 ⁵ / ₁₆		
L3	43 ¹¹ / ₁₆		
PM1	1/4"		
s	6xØ19		
Trim			
Volumen	1 ¹ / ₃₂		

Weight	
Total weight	330.9 kg

Connections			
Suction nozzle		Discharge nozzle	
DN65		DN50	
PN10/16		PN10/16	
EN1092-2		EN1092-2	
C	1 ³ / ₁₆	C	1 ³ / ₁₆
D	7 ⁵ / ₁₆	D	6 ¹ / ₂
d1	4 ⁵ / ₈	d1	3 ⁷ / ₈
K	5 ¹¹ / ₁₆	K	4 ¹⁵ / ₁₆
L	3/4	L	3/4
Z	3/16	Z	3/16

Note:
Weight and Dimensions of selected Hydrovar are NOT considered.
Please refer to additional datasheet.

Dimensions and weight without obligation

Project Xylect-20182283
Block NSCF50-315/150/P46PCC4

Created by
Created on 1/11/2025

Last update 1/11/2025