

# NSCF65-160/22/P46PCC4

## Technical data

Company name  
Contact  
Phone number  
e-mail address

Operating data				
1	Pumpe type	Single head pump	Fluid	Water, pure
2	No. of pumps	1	Operating temperature t A	°F 39.2
3	Nominal flow	US g.p.m. 0	Max / Min Operating Temperature mech. Seal	°F 120 / -25
4	Nominal head	ft 0	pH-value at t A	7
5	Static head	ft 0	Density at t A	lb/ft³ 62.4
6	Inlet pressure	psi 0	Kin. viscosity at t A	ft²/s 1.689E-5
7	Environmental temperature	°F 68	Vapor pressure at t A	psi 14.5
8	Available system NPSH	ft 0	Altitude	0

Pump data				
9	Lubrication	Standard, Grease lubrication [Std]		
10	Execution	[F] = 4 poles motor unit with standard cuopling		
11	Design	Horizontal	Impeller Ø	Max. inch 7 1/16 designed inch 6 1/4 Min. inch 5 15/16
12	Operating speed	1750 rpm	Stages	1
13	Suction nozzle	DN 80 / PN 16 / EN1092-2	Flow	Nominal US g.p.m.
14	Discharge nozzle	DN 65 / PN 16 / EN1092-2		Max- US g.p.m. 405.1 Min- US g.p.m. 79.3
15	Max. casing pressure	psi	Head	Nominal ft
16	Max. working pressure	psi 16.7		at Qmax ft 18.9 at Qmin ft 38.3
17	Impeller type	Radial impeller		
18	Head H(Q=0)	ft 39	Shaft power	hp
19	Max. shaft power	hp 2.9	Efficiency	%
20	Pump weight	kg 132.3	NPSH 3%	ft
21	Total weight	lb 285.4		

Materials				
22		<b>Pump</b>	<b>Shaft Seal</b>	
23	Volute Casing	Cast Iron	Single mechanical seal, without shaft sleeve	
24	Casing Cover	Cast Iron	eMG12 - Ø28mm	BQ7EGG-WA
25	Impeller	Cast Iron	Mechanical seal diameter	1 1/8 inch
26	Shaft	Stainless steel	1. Rotating ring	Carbon graphite resin impregnated
27	Wear ring	Stainless steel	2. Stationary ring	SiC, silicon carbide, sintered press.less
28	Impeller lock nut and washer	Stainless steel	3. Secondary seal	Ethylene propylene rubber (EPDM)
29	Impeller key	Stainless steel	4. Springs	CrNiMo - Steel
30	Fill and drain plugs	Stainless steel	5. Others	EPDM - WRAS
31			Gaskets of the pump	Ethylene propylene rubber (EPDM)
32				
33				
34				
35				
36				
37				
38				
39				
40				
41				

Motor data				Electrical and dimensional data refer to IE3 motor		Coupling	
42	Manufacturer	Lowara		Manufacturer	Flender		
43	Specific design	IE3 3ph Surface Motor - Premium Efficiency		Series	Standard Coupling - N-EUPEX - Type B		
44	Type	PLM 100 B3 2,2 kW		Shaft diameter	Pump 15/16 inch	Motor 1 1/8 inch	
45	Rated power	2.9502 hp	Rated current	4.73 A	Frame size	68	
46	Nominal speed	1740 rpm	Rated voltage	380 V	Spacer length	inch	1/8
47	Frame size	100	Service factor	1	Weight	lb 1.2	
48	Weight	lb 87.7	Degree of protection	IP55	Coupling protection	COUPLGUARD 175x102PNTD	0.5291 lb

Base plate			Remarks	
49	Name	BASE 4A 1000X450 BLU		
50	Weight	lb 63.7		

# NSCF65-160/22/P46PCC4

## Performance curve

Company name  
Contact  
Phone number  
e-mail address

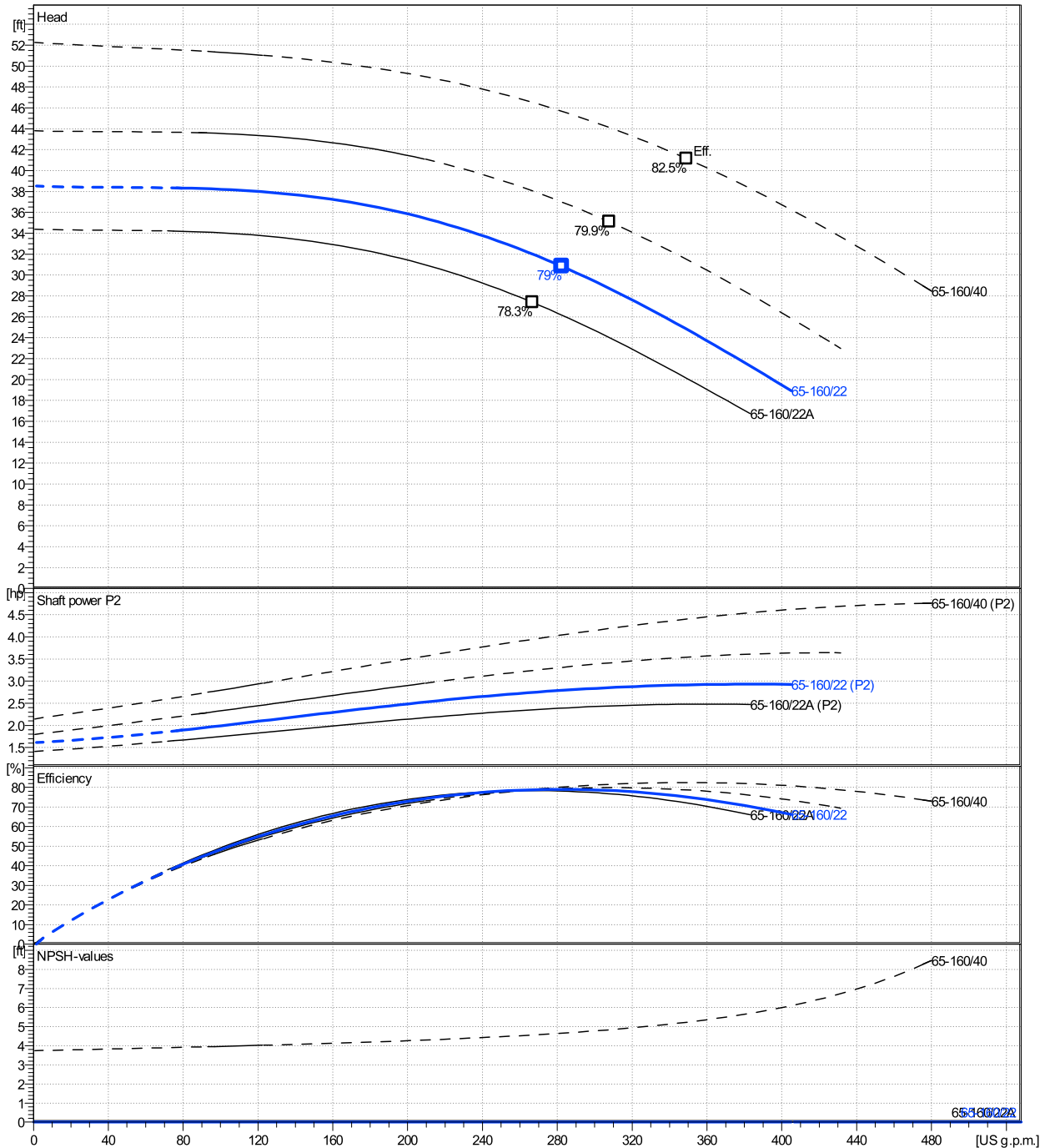
	Ø mm	Pump capacity Operating range η			Pump head η		Shaft power P2 η			Frequency	Hz	60
		Min. US g.p.m.	Max. US g.p.m.	Max. US g.p.m.	H(Q=0) ft	η ft	P2(Q=0) hp	Max. hp	η hp	Operating speed	rpm	1750
actual	6 1/4	79.3	405	282	38.5	30.8		2.93	2.79	Nominal flow	US g.p.m.	0
Min.	0	/	/	267	34.4	27.4		/	2.35	Nominal head	ft	0
Max.	7 1/16	/	/	349	52.3	41.1		/	4.4	Inlet pressure	psi	0
										Static head	ft	0

**Power datas referred to:**

hydr. Performance acceptance acc. To EN ISO 9906 Class Grade 3B

Water, pure [100%] ; 39.2°F; 62.4lb/ft³; 1.69E-5ft²/s

MEI: N.A - according to Ecodesign Directive 2009/125/EC and Regulation (EU) No.547/2012



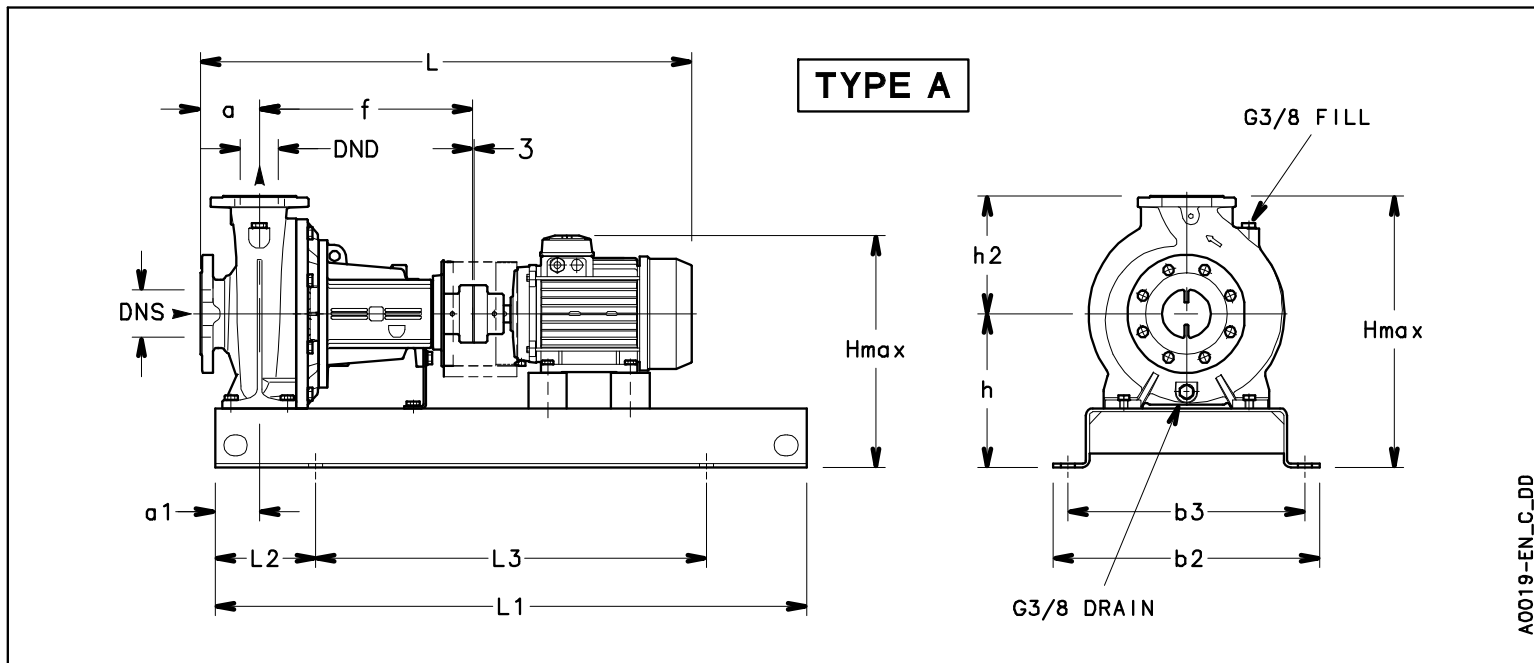
# NSCF65-160/22/P46PCC4

## Dimensions

Company name  
Contact  
Phone number  
e-mail address

Frame mounted  
[F] = 4 poles motor unit with standard coupling  
PLM 100 B3 2,2 kW

Electrical and dimensional data refer to IE3 motor



### Dimensions [ inch ]

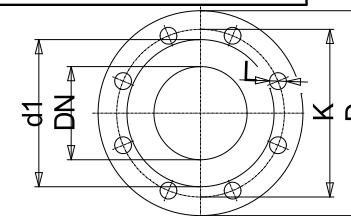
a	3 <sup>15</sup> / <sub>16</sub>
a1	2 <sup>15</sup> / <sub>16</sub>
AD	6 <sup>7</sup> / <sub>16</sub>
b2	17 <sup>11</sup> / <sub>16</sub>
b3	15 <sup>3</sup> / <sub>4</sub>
DND	2 <sup>9</sup> / <sub>16</sub>
DNS	3 <sup>1</sup> / <sub>8</sub>
f	14 <sup>3</sup> / <sub>16</sub>
Guard	4 <sup>7</sup> / <sub>16</sub>
h	10 <sup>1</sup> / <sub>4</sub>
h2	7 <sup>7</sup> / <sub>8</sub>
Hmax	18 <sup>1</sup> / <sub>8</sub>
L	34 <sup>15</sup> / <sub>16</sub>
L1	39 <sup>3</sup> / <sub>8</sub>
L2	6 <sup>11</sup> / <sub>16</sub>
L3	26
s	4xØ24
Type	A
Volumen	1 <sup>1</sup> / <sub>128</sub>
x	1 <sup>1</sup> / <sub>8</sub>

### Weight

Total weight	129.48 kg
--------------	-----------

### Connections

Suction nozzle		Discharge nozzle	
DN 80		DN 65	
PN 16		PN 16	
EN1092-2		EN1092-2	
C	7 <sup>7</sup> / <sub>8</sub>	C	13 <sup>1</sup> / <sub>16</sub>
D	7 <sup>7</sup> / <sub>8</sub>	D	7 <sup>5</sup> / <sub>16</sub>
df	5 <sup>3</sup> / <sub>16</sub>	df	4 <sup>5</sup> / <sub>8</sub>
DN	3 <sup>1</sup> / <sub>8</sub>	DN	2 <sup>9</sup> / <sub>16</sub>
K	6 <sup>5</sup> / <sub>16</sub>	K	5 <sup>11</sup> / <sub>16</sub>
L	8 x 19	L	4 x 19



Value C, D may vary from Standard

Note:  
Weight and Dimensions of selected Hydrovar are NOT considered.  
Please refer to additional datasheet.

### Dimensions and weight without obligation

Project	Xylect-20182283
Block	NSCF65-160/300/L26UCC4

Created by	
Created on	1/11/2025

Last update	1/11/2025
-------------	-----------