

# NSCF65-200/40/P46PCC4

## Technical data

Company name  
Contact  
Phone number  
e-mail address

| Operating data |                           |                  |  |                |
|----------------|---------------------------|------------------|--|----------------|
| 1              | Pumpe type                | Single head pump | Fluid                                      | Water, pure    |
| 2              | No. of pumps              | 1                | Operating temperature t A                  | °F 39.2        |
| 3              | Nominal flow              | US g.p.m. 0      | Max / Min Operating Temperature mech. Seal | °F 120 / -25   |
| 4              | Nominal head              | ft 0             | pH-value at t A                            | 7              |
| 5              | Static head               | ft 0             | Density at t A                             | lb/ft³ 62.4    |
| 6              | Inlet pressure            | psi 0            | Kin. viscosity at t A                      | ft²/s 1.689E-5 |
| 7              | Environmental temperature | °F 68            | Vapor pressure at t A                      | psi 14.5       |
| 8              | Available system NPSH     | ft 0             | Altitude                                   | 0              |

| Pump data |                       |   |             |  |
|-----------|-----------------------|---|-------------|--|
| 9         | Lubrication           | Standard, Grease lubrication [Std]              |             |  |
| 10        | Execution             | [F] = 4 poles motor unit with standard cuopling |             |  |
| 11        | Design                | Horizontal                                      | Impeller Ø  | Max. inch 8 11/16<br>designed inch 7 7/16<br>Min. inch 6 13/16 |
| 12        | Operating speed       | 1750 rpm  | Stages      | 1  |
| 13        | Suction nozzle        | DN 80 / PN 16 / EN1092-2                        | Flow        | Nominal US g.p.m.  |
| 14        | Discharge nozzle      | DN 65 / PN 16 / EN1092-2                        |             | Max- US g.p.m. 400.7<br>Min- US g.p.m. 79.3                    |
| 15        | Max. casing pressure  | psi   | Head        | Nominal ft   |
| 16        | Max. working pressure | psi 25.2  |             | at Qmax ft 29.8<br>at Qmin ft 58                               |
| 17        | Impeller type         | Radial impeller                                 |             |  |
| 18        | Head H(Q=0)           | ft 58   | Shaft power | hp   |
| 19        | Max. shaft power      | hp 4.9  | Efficiency  | %  |
| 20        | Pump weight           | kg 138.9  | NPSH 3%     | ft   |
| 21        | Total weight          | lb 344.8  |             |  |

| Materials |                              |                 |  |  |
|-----------|------------------------------|-----------------|--|--|
| 22        |                              | <b>Pump</b>     | <b>Shaft Seal</b>                            |  |
| 23        | Volute Casing                | Cast Iron       | Single mechanical seal, without shaft sleeve |  |
| 24        | Casing Cover                 | Cast Iron       | eMG12 - Ø28mm                                | BQ7EGG-WA                                  |
| 25        | Impeller                     | Cast Iron       | Mechanical seal diameter                     | 1 1/8 inch                                 |
| 26        | Shaft                        | Stainless steel | 1. Rotating ring                             | Carbon graphite resin impregnated          |
| 27        | Wear ring                    | Stainless steel | 2. Stationary ring                           | SiC, silicon carbide, sintered press. less |
| 28        | Impeller lock nut and washer | Stainless steel | 3. Secondary seal                            | Ethylene propylene rubber (EPDM)           |
| 29        | Impeller key                 | Stainless steel | 4. Springs                                   | CrNiMo - Steel                             |
| 30        | Fill and drain plugs         | Stainless steel | 5. Others                                    | EPDM - WRAS                                |
| 31        |                              |                 | Gaskets of the pump                          | Ethylene propylene rubber (EPDM)           |
| 32        |                              |                 |  |  |
| 33        |                              |                 |  |  |
| 34        |                              |                 |  |  |
| 35        |                              |                 |  |  |
| 36        |                              |                 |  |  |
| 37        |                              |                 |  |  |
| 38        |                              |                 |  |  |
| 39        |                              |                 |  |  |
| 40        |                              |                 |  |  |
| 41        |                              |                 |  |  |

| Motor data |                 |  |                      | Electrical and dimensional data refer to IE3 motor |                                      | Coupling               |           |
|------------|-----------------|--|----------------------|--|--------------------------------------|------------------------|-----------|
| 42         | Manufacturer    | Lowara                                     |                      | Manufacturer                                       | Flender                              |                        |           |
| 43         | Specific design | IE3 3ph Surface Motor - Premium Efficiency |                      | Series   | Standard Coupling - N-EUPEX - Type B |                        |           |
| 44         | Type            | PLM 112 B3 4 kW                            |                      | Shaft diameter                                     | Pump 15/16 inch                      | Motor 1 1/8 inch       |           |
| 45         | Rated power     | 5.3641 hp                                  | Rated current        | 8.52 A   | Frame size                           | 68                     |           |
| 46         | Nominal speed   | 1740 rpm                                   | Rated voltage        | 380 V  | Spacer length                        | inch                   | 1/8       |
| 47         | Frame size      | 112  | Service factor       | 1  | Weight                               | lb 1.2                 |           |
| 48         | Weight          | lb 126.8                                   | Degree of protection | IP55   | Coupling protection                  | COUPLGUARD 175x102PNTD | 0.5291 lb |

| Base plate |        |                      | Remarks |  |
|------------|--------|----------------------|---------|--|
| 49         | Name   | BASE 5B 1120X490 BLU |         |  |
| 50         | Weight | lb 77.4              |         |  |

|         |                        |            |           |             |           |
|---------|------------------------|------------|-----------|-------------|-----------|
| Project | Xylect-20182283        | Created by |           | Last update | 1/11/2025 |
| Block   | NSCF65-200/370/L26UCC4 | Created on | 1/11/2025 |             |           |

# NSCF65-200/40/P46PCC4

## Performance curve

Company name  
Contact  
Phone number  
e-mail address

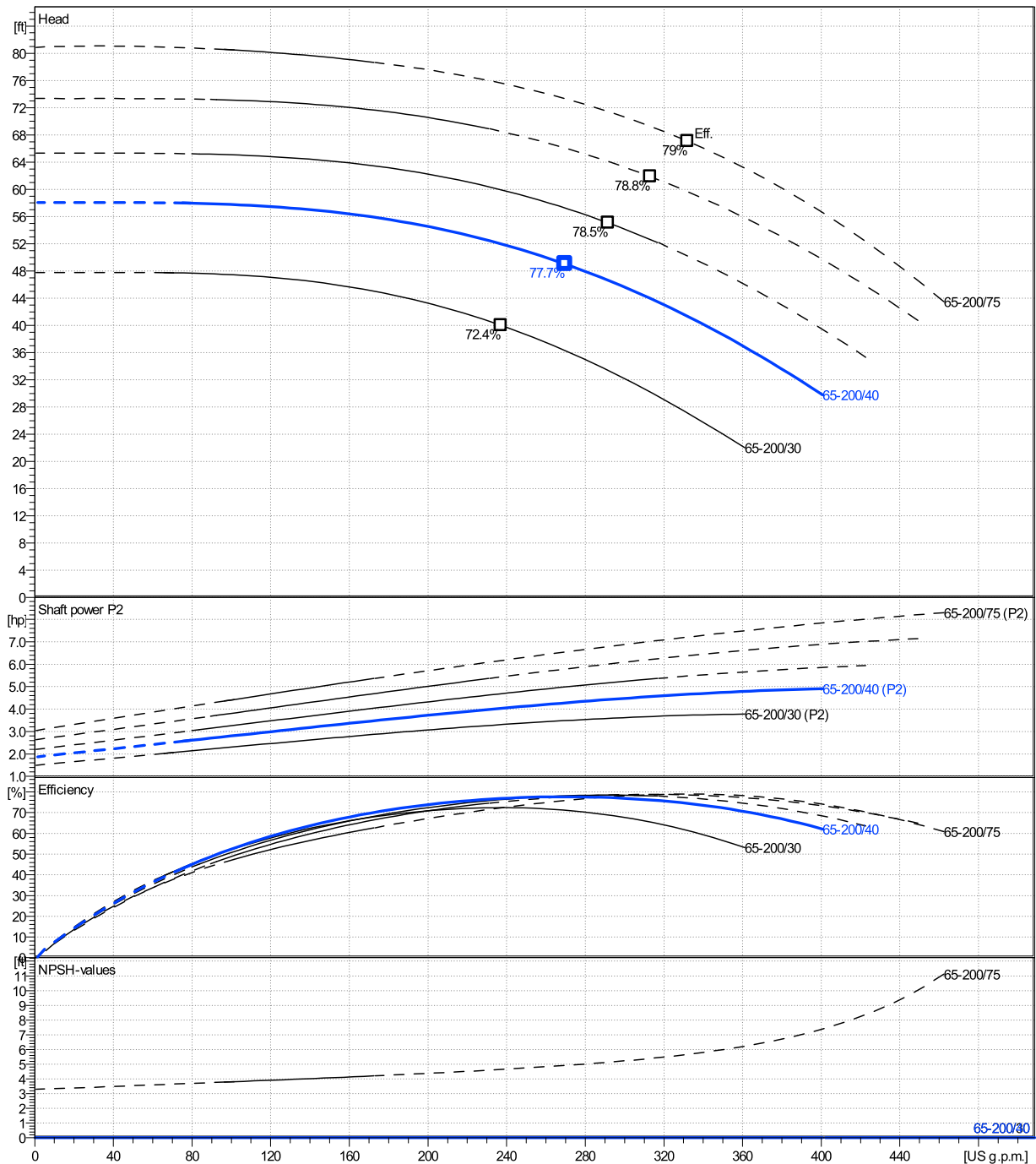
|        | Ø<br>mm | Pump capacity<br>Operating range<br>η |                   |                   | Pump head<br>η |            | Shaft power P2<br>η |            |            | Frequency<br>Hz        |   |
|--------|---------|---------------------------------------|-------------------|-------------------|----------------|------------|---------------------|------------|------------|------------------------|---|
|        |         | Min.<br>US g.p.m.                     | Max.<br>US g.p.m. | Max.<br>US g.p.m. | H(Q=0)<br>ft   | Max.<br>ft | P2(Q=0)<br>hp       | Max.<br>hp | Max.<br>hp | Operating speed<br>rpm |   |
| actual | 7 7/16  | 79.3                                  | 401               | 270               | 58.1           | 49         | 4.91                | 4.28       | 60         | 1750                   |   |
| Min.   | 0       | /                                     | /                 | 237               | 47.8           | 40         | /                   | 3.31       |            |                        | 0 |
| Max.   | 8 11/16 | /                                     | /                 | 332               | 80.9           | 67.1       | /                   | 7.21       |            |                        | 0 |

**Power datas referred to:**

hydr. Performance acceptance acc. To EN ISO 9906 Class Grade 3B

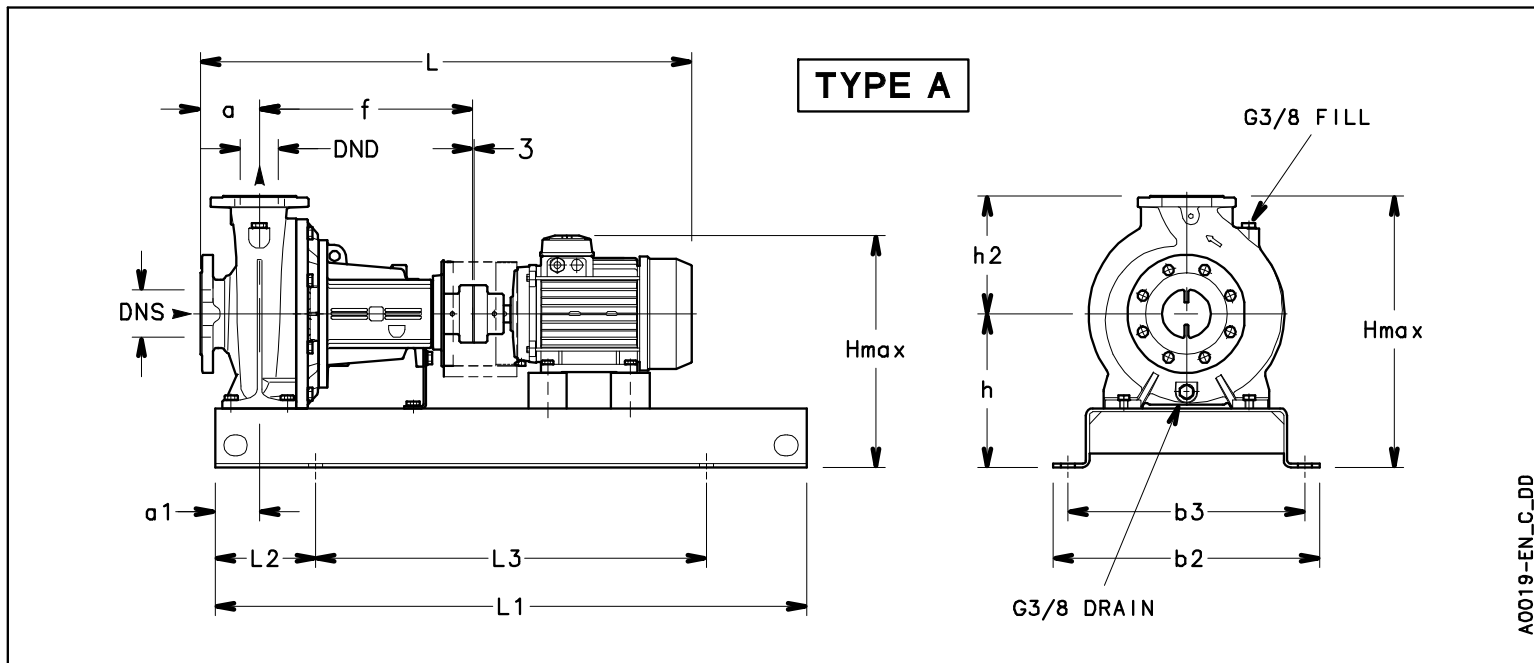
Water, pure [100%] ; 39.2°F; 62.4lb/ft³; 1.69E-5ft²/s

MEI: N.A - according to Ecodesign Directive 2009/125/EC and Regulation (EU) No.547/2012



Frame mounted  
[F] = 4 poles motor unit with standard coupling  
PLM 112 B3 4 kW

Electrical and dimensional data refer to IE3 motor



**Dimensions** [ inch ]

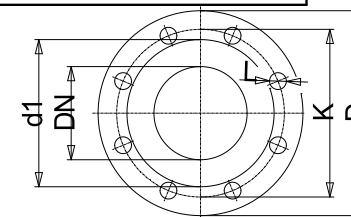
|         |                                 |  |  |
|---------|---------------------------------|--|--|
| a       | 3 <sup>15</sup> / <sub>16</sub> |  |  |
| a1      | 2 <sup>15</sup> / <sub>16</sub> |  |  |
| AD      | 6 <sup>5</sup> / <sub>8</sub>   |  |  |
| b2      | 19 <sup>5</sup> / <sub>16</sub> |  |  |
| b3      | 17 <sup>5</sup> / <sub>16</sub> |  |  |
| DND     | 2 <sup>9</sup> / <sub>16</sub>  |  |  |
| DNS     | 3 <sup>1</sup> / <sub>8</sub>   |  |  |
| f       | 14 <sup>3</sup> / <sub>16</sub> |  |  |
| Guard   | 4 <sup>7</sup> / <sub>16</sub>  |  |  |
| h       | 11 <sup>1</sup> / <sub>32</sub> |  |  |
| h2      | 8 <sup>7</sup> / <sub>8</sub>   |  |  |
| Hmax    | 19 <sup>7</sup> / <sub>8</sub>  |  |  |
| L       | 36 <sup>1</sup> / <sub>4</sub>  |  |  |
| L1      | 44 <sup>1</sup> / <sub>8</sub>  |  |  |
| L2      | 7 <sup>1</sup> / <sub>2</sub>   |  |  |
| L3      | 29 <sup>1</sup> / <sub>8</sub>  |  |  |
| s       | 4xØ24                           |  |  |
| Type    | A                               |  |  |
| Volumen | 1 <sup>1</sup> / <sub>64</sub>  |  |  |
| x       | 1 <sup>1</sup> / <sub>8</sub>   |  |  |

**Weight**

|              |           |
|--------------|-----------|
| Total weight | 156.38 kg |
|--------------|-----------|

**Connections**

|                       |                                |                         |                                 |
|-----------------------|--------------------------------|-------------------------|---------------------------------|
| <b>Suction nozzle</b> |                                | <b>Discharge nozzle</b> |                                 |
| DN 80                 |                                | DN 65                   |                                 |
| PN 16                 |                                | PN 16                   |                                 |
| EN1092-2              |                                | EN1092-2                |                                 |
| C                     | 7 <sup>7</sup> / <sub>8</sub>  | C                       | 13 <sup>1</sup> / <sub>16</sub> |
| D                     | 7 <sup>7</sup> / <sub>8</sub>  | D                       | 7 <sup>5</sup> / <sub>16</sub>  |
| df                    | 5 <sup>3</sup> / <sub>16</sub> | df                      | 4 <sup>5</sup> / <sub>8</sub>   |
| DN                    | 3 <sup>1</sup> / <sub>8</sub>  | DN                      | 2 <sup>9</sup> / <sub>16</sub>  |
| K                     | 6 <sup>5</sup> / <sub>16</sub> | K                       | 5 <sup>11</sup> / <sub>16</sub> |
| L                     | 8 x 19                         | L                       | 4 x 19                          |



Value C, D may vary from Standard

Note:  
Weight and Dimensions of selected Hydrovar are NOT considered.  
Please refer to additional datasheet.

**Dimensions and weight without obligation**

|         |                        |            |           |             |           |
|---------|------------------------|------------|-----------|-------------|-----------|
| Project | Xylect-20182283        | Created by |           | Last update | 1/11/2025 |
| Block   | NSCF65-200/370/L26UCC4 | Created on | 1/11/2025 |             |           |