

NSCF65-250/750/L26UCC4 E4

Technical data

Company name
Contact
Phone number
e-mail address

Operating data				
1	Pumpe type	Single head pump	Fluid	Water, pure
2	No. of pumps	1	Operating temperature at A	°F 39.2
3	Nominal flow	US g.p.m. 0	Max / Min Operating Temperature mech. Seal	°F 120 / -25
4	Nominal head	ft 0	pH-value at t A	7
5	Static head	ft 0	Density at t A	lb/ft³ 62.4
6	Inlet pressure	psi 0	Kin. viscosity at t A	ft²/s 1.689E-5
7	Environmental temperature	°F 68	Vapor pressure at t A	psi 14.5
8	Available system NPSH	ft 0	Altitude	0

Pump data				
9	Lubrication	Standard, Grease lubrication [Std]		
10	Execution	[F] = 2 poles motor unit with standard coupling		
11	Design	Horizontal	Impeller Ø	Max. inch 9 9/16
12	Operating speed	3500 rpm	designed	inch 9 9/16
13	Suction nozzle	DN 80 / PN 16 / EN1092-2	Min.	inch 8 1/4
14	Discharge nozzle	DN 65 / PN 16 / EN1092-2	Flow	Nominal US g.p.m.
15	Max. casing pressure	psi	Max-	US g.p.m. 1056.7
16	Max. working pressure	psi 162.6	Min-	US g.p.m. 199.4
17	Impeller type	Radial impeller	Head	Nominal ft
18	Head H(Q=0)	ft 380	at Qmax	ft 236.7
19	Max. shaft power	hp 92.9	at Qmin	ft 391
20	Pump weight	kg 178.6	Shaft power	hp
21	Total weight	lb On demand	Efficiency	%
			NPSH 3%	ft

Materials				
22		Pump	Shaft Seal	
23	Volute Casing	Cast Iron	Single mechanical seal, without shaft sleeve	
24	Casing Cover	Cast Iron	eMG12 - Ø38mm	BQ7EGG-WA
25	Impeller	Cast Iron	Mechanical seal diameter	1 1/2 inch
26	Shaft	Stainless steel	1. Rotating ring	Carbon graphite resin impregnated
27	Wear ring	Stainless steel	2. Stationary ring	SiC, silicon carbide, sintered press.less
28	Impeller lock nut and washer	Stainless steel	3. Secondary seal	Ethylene propylene rubber (EPDM)
29	Impeller key	Stainless steel	4. Springs	CrNiMo - Steel
30	Fill and drain plugs	Stainless steel	5. Others	EPDM - WRAS
31			Gaskets of the pump	Ethylene propylene rubber (EPDM)
32				
33				
34				
35				
36				
37				
38				
39				
40				
41				

Motor data				Coupling		
42	Manufacturer	Lowara		Manufacturer	Flender	
43	Specific design	IE4 3ph Surface Motor - Super Premium Efficiency		Series	Standard Coupling - N-EUPEX - Type B	
44	Type	3MGS 280 S B3 75 kW E4		Shaft diameter	Pump 1 1/4 inch Motor 2 9/16 inch	
45	Rated power	100.58 hp	Rated current	135 A	Frame size	160
46	Nominal speed	3582 rpm	Rated voltage	380 V	Spacer length	inch 1/8
47	Frame size	280 S	Service factor	1	Weight	lb 17.2
48	Weight	lb 1,313.5	Degree of protection	IP55	Coupling protection	COUPLGUARD 190KS95-16 4571 1.5432 lb

Base plate			Remarks	
49	Name	BASE 9A 1800X730 BLU		
50	Weight	lb 302.5		

NSCF65-250/750/L26UCC4 E4

Performance curve

Company name
Contact
Phone number
e-mail address

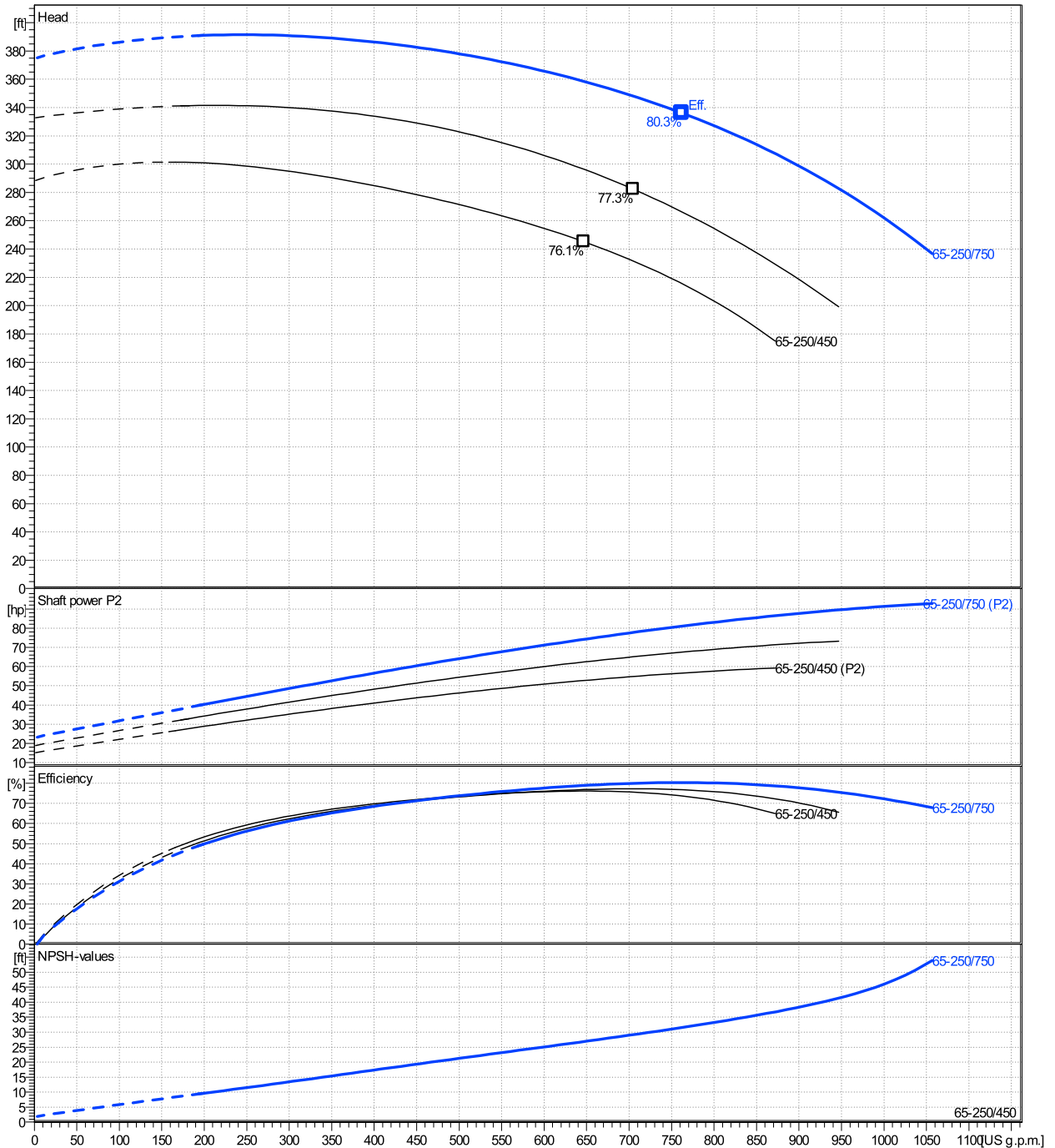
	Ø mm	Pump capacity Operating range η			Pump head η		Shaft power P2 η			Frequency Hz		60
		Min. US g.p.m.	Max. US g.p.m.	Max. US g.p.m.	H(Q=0) ft	Max. ft	P2(Q=0) hp	Max. hp	Max. hp	Operating speed rpm	3500	
actual	9 9/16	199	1060	762	375	336	92.9	81	81	Nominal flow US g.p.m.	0	
Min.	0	/	/	647	288	245	/	/	52.7	Nominal head ft	0	
Max.	9 9/16	/	/	762	375	336	/	/	81	Inlet pressure psi	0	
										Static head ft	0	

Power datas referred to:

hydr. Performance acceptance acc. To EN ISO 9906 Class Grade 3B

Water, pure [100%] ; 39.2°F; 62.4lb/ft³; 1.69E-5ft²/s

MEI: N.A - according to Ecodesign Directive 2009/125/EC and Regulation (EU) No.547/2012



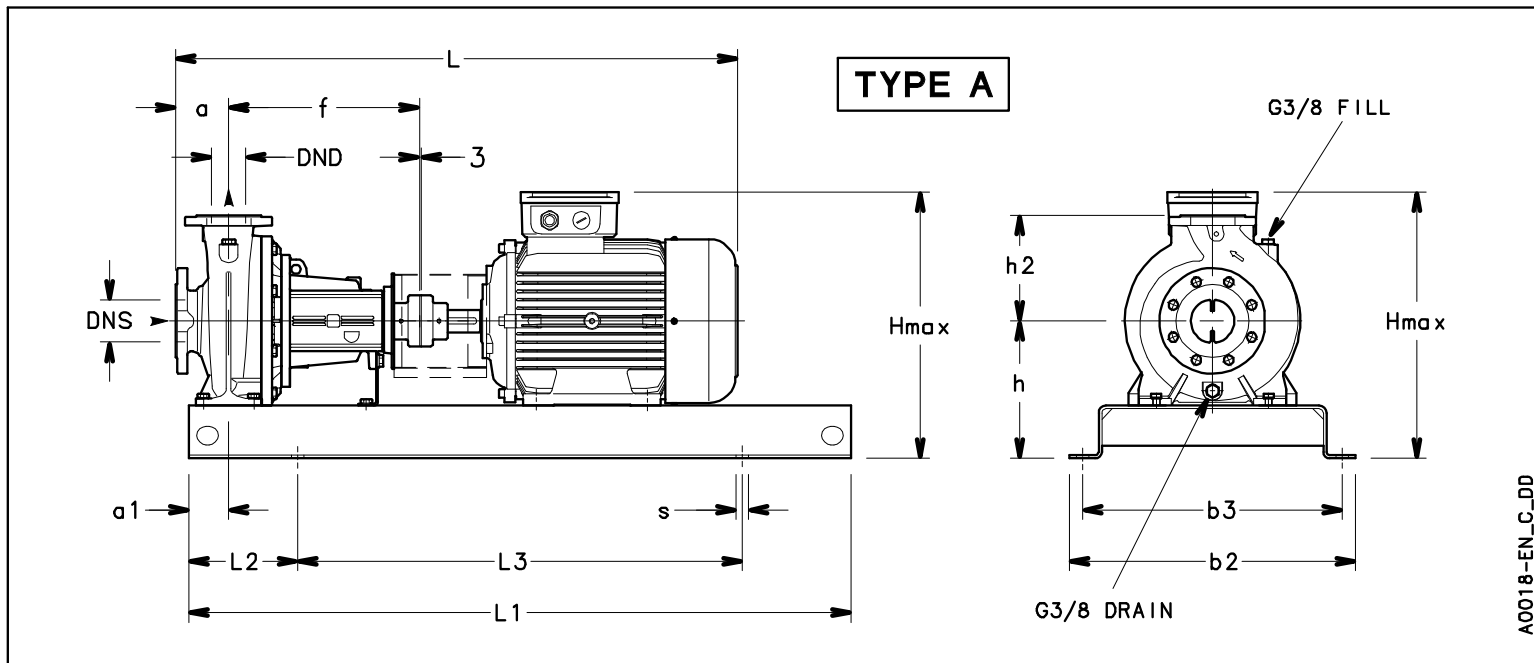
NSCF65-250/750/L26UCC4 E4

Dimensions

Company name
Contact
Phone number
e-mail address

Frame mounted
[F] = 2 poles motor unit with standard coupling
3MGS 280 S B3 75 kW E4

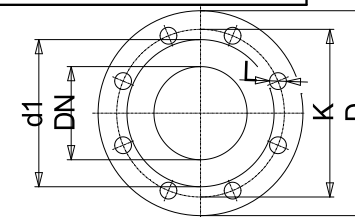
Electrical and dimensional data refer to IE4 motor



Dimensions		[inch]	
a	3 ¹⁵ / ₁₆		
a1	3 ⁹ / ₁₆		
AD	16 ¹ / ₄		
b2	28 ³ / ₄		
b3	26 ³ / ₈		
DND	2 ⁹ / ₁₆		
DNS	3 ¹ / ₈		
f	18 ¹ / ₂		
Guard	8 ³ / ₄		
h2	9 ¹³ / ₁₆		
L1	70 ⁷ / ₈		
L2	11 ¹³ / ₁₆		
L3	47 ¹ / ₄		
s	4xØ28		
Type	A		
x	1 ¹ / ₈		

Weight	
Total weight	On demand kg

Connections			
Suction nozzle		Discharge nozzle	
DN 80		DN 65	
PN 16		PN 16	
EN1092-2		EN1092-2	
C	7 ⁷ / ₈	C	13 ¹ / ₁₆
D	7 ⁷ / ₈	D	7 ⁵ / ₁₆
df	5 ³ / ₁₆	df	4 ⁵ / ₈
DN	3 ¹ / ₈	DN	2 ⁹ / ₁₆
K	6 ⁵ / ₁₆	K	5 ¹¹ / ₁₆
L	8 x 19	L	4 x 19



Value C, D may vary from Standard

Dimensions and weight without obligation

Project	Xylect-20182283	Created by		Last update	1/11/2025
Block	NSCF65-250/750/L26UCC4 E4	Created on	1/11/2025		