

# NSCF80-200/55/P46PCC4

## Technical data

Company name  
Contact  
Phone number  
e-mail address

Operating data				
1	Pumpe type	Single head pump	Fluid	Water, pure
2	No. of pumps	1	Operating temperature at A	°F 39.2
3	Nominal flow	US g.p.m. 0	Max / Min Operating Temperature mech. Seal	°F 120 / -25
4	Nominal head	ft 0	pH-value at t A	7
5	Static head	ft 0	Density at t A	lb/ft³ 62.4
6	Inlet pressure	psi 0	Kin. viscosity at t A	ft²/s 1.689E-5
7	Environmental temperature	°F 68	Vapor pressure at t A	psi 14.5
8	Available system NPSH	ft 0	Altitude	0

Pump data				
9	Lubrication	Standard, Grease lubrication [Std]		
10	Execution	[F] = 4 poles motor unit with standard coupling		
11	Design	Horizontal		
12	Operating speed	1750 rpm	Stages	1
13	Suction nozzle	DN 100 / PN 16 / EN1092-2	Impeller Ø	Max. inch 8 5/8
14	Discharge nozzle	DN 80 / PN 16 / EN1092-2		designed inch 7 3/8
15	Max. casing pressure	psi	Flow	Min. inch 7 3/8
16	Max. working pressure	psi 24.8		Nominal US g.p.m.
17	Impeller type	Radial impeller		Max- US g.p.m. 651.6
18	Head H(Q=0)	ft 57	Head	Min- US g.p.m. 145.3
19	Max. shaft power	hp 7.2		Nominal ft
20	Pump weight	kg 183		at Qmax ft 31.4
21	Total weight	lb 405.4	Shaft power hp	at Qmin ft 56.7
			Efficiency %	
			NPSH 3%	ft

Materials				
22		<b>Pump</b>	<b>Shaft Seal</b>	
23	Volute Casing	Cast Iron	Single mechanical seal, without shaft sleeve	
24	Casing Cover	Cast Iron	eMG12 - Ø38mm	BQ7EGG-WA
25	Impeller	Cast Iron	Mechanical seal diameter	1 1/2 inch
26	Shaft	Stainless steel	1. Rotating ring	Carbon graphite resin impregnated
27	Wear ring	Stainless steel	2. Stationary ring	SiC, silicon carbide, sintered press.less
28	Impeller lock nut and washer	Stainless steel	3. Secondary seal	Ethylene propylene rubber (EPDM)
29	Impeller key	Stainless steel	4. Springs	CrNiMo - Steel
30	Fill and drain plugs	Stainless steel	5. Others	EPDM - WRAS
31			Gaskets of the pump	Ethylene propylene rubber (EPDM)
32				
33				
34				
35				
36				
37				
38				
39				
40				
41				

Motor data				Electrical and dimensional data refer to IE3 motor		Coupling	
42	Manufacturer	Lowara		Manufacturer	Flender		
43	Specific design	IE3 3ph Surface Motor - Premium Efficiency		Series	Standard Coupling - N-EUPEX - Type B		
44	Type	PLM 132 B3 5,5 kW		Shaft diameter	Pump 1 1/4 inch	Motor 1 1/2 inch	
45	Rated power	7.3756 hp	Rated current	11.6 A	Frame size	95	
46	Nominal speed	1758 rpm	Rated voltage	380 V	Spacer length	inch	1/8
47	Frame size	132	Service factor	1	Weight	lb 4.9	
48	Weight	lb 138.4	Degree of protection	IP55	Coupling protection	COUPLGUARD 190KS95-16 4571	1.5432 lb

Base plate			Remarks	
49	Name	BASE 5D 1120X490 BLU		
50	Weight	lb 77.6		

# NSCF80-200/55/P46PCC4

## Performance curve

Company name  
Contact  
Phone number  
e-mail address

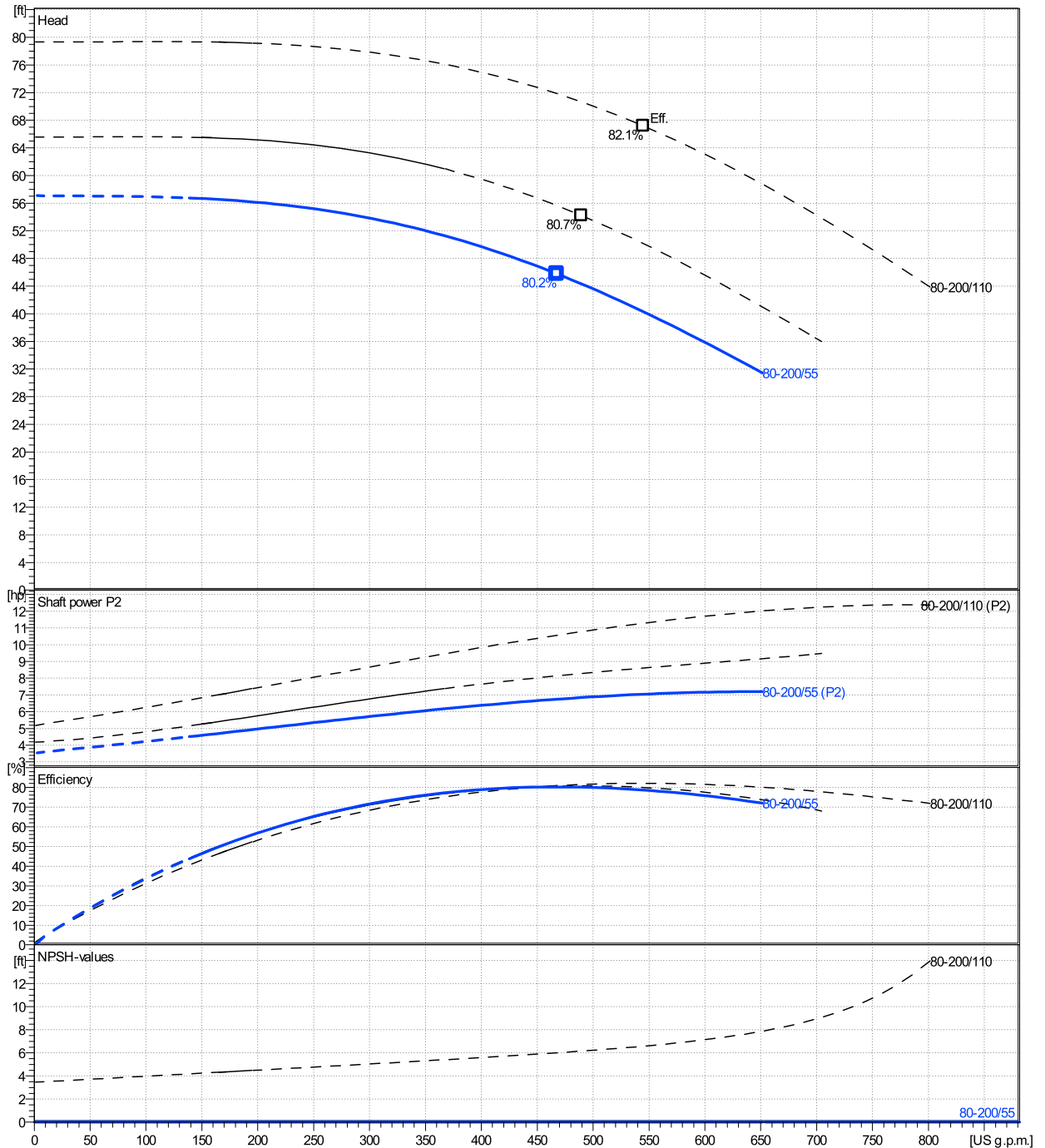
	Ø mm	Pump capacity Operating range η			Pump head H(Q=0) η		Shaft power P2 P2(Q=0) η			Frequency Hz	
		Min. US g.p.m.	Max. US g.p.m.	Max. US g.p.m.	ft	ft	hp	Max. hp	η hp	rpm	
actual	7 3/8	145	652	468	57.1	45.8	7.19	6.74	60	1750	
Min.	0	/	/	468	57.1	45.8	/	6.74		0	
Max.	8 5/8	/	/	545	79.4	67.2	/	11.3		0	

**Power datas referred to:**

hydr. Performance acceptance acc. To EN ISO 9906 Class Grade 3B

Water, pure [100%] ; 39.2°F; 62.4lb/ft³; 1.69E-5ft²/s

MEI: N.A - according to Ecodesign Directive 2009/125/EC and Regulation (EU) No.547/2012



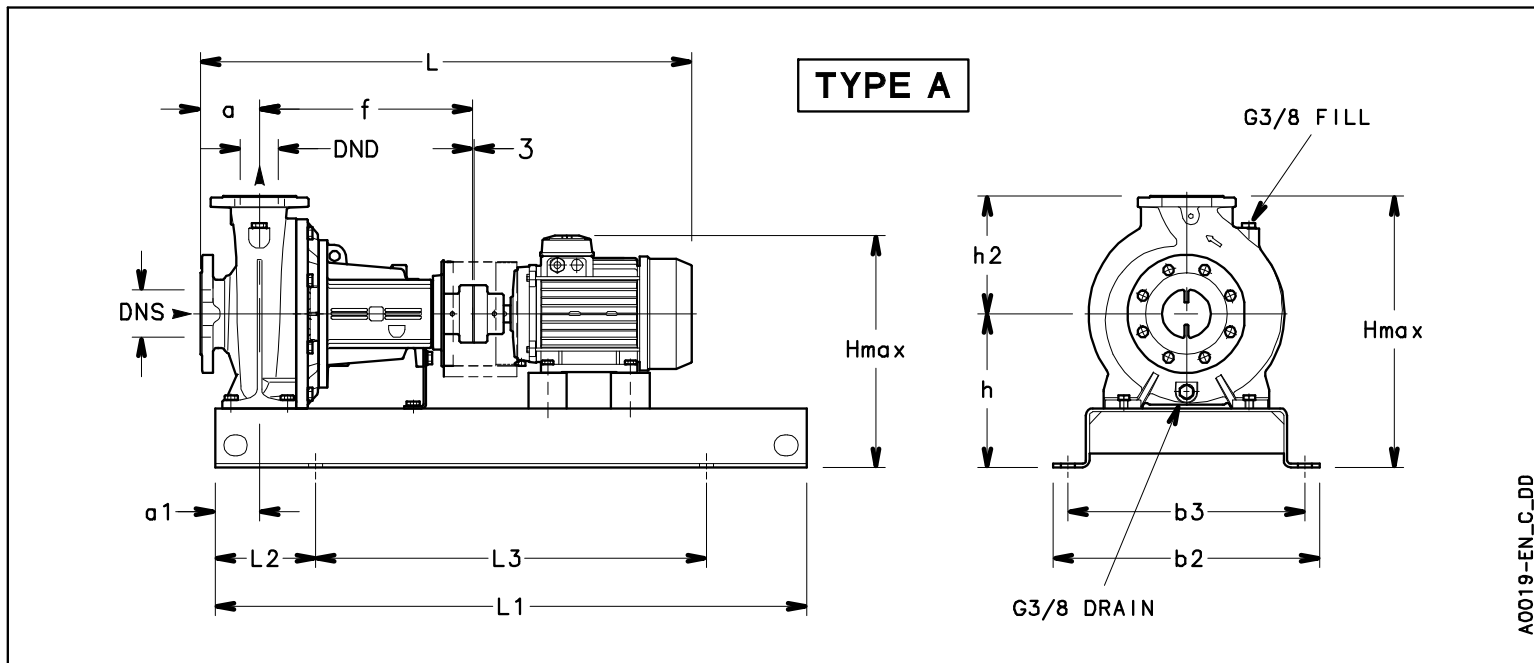
**NSCF80-200/55/P46PCC4**

**Dimensions**

Company name  
Contact  
Phone number  
e-mail address

Frame mounted  
[F] = 4 poles motor unit with standard coupling  
PLM 132 B3 5,5 kW

Electrical and dimensional data refer to IE3 motor

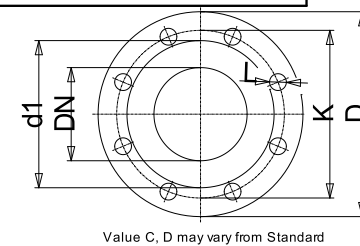


**Dimensions [ inch ]**

a	4 <sup>15</sup> / <sub>16</sub>		
a1	2 <sup>15</sup> / <sub>16</sub>		
AD	7 <sup>1</sup> / <sub>2</sub>		
b2	19 <sup>5</sup> / <sub>16</sub>		
b3	17 <sup>5</sup> / <sub>16</sub>		
DND	3 <sup>1</sup> / <sub>8</sub>		
DNS	3 <sup>15</sup> / <sub>16</sub>		
f	18 <sup>1</sup> / <sub>2</sub>		
Guard	6 <sup>7</sup> / <sub>16</sub>		
h	11 <sup>1</sup> / <sub>32</sub>		
h2	9 <sup>13</sup> / <sub>16</sub>		
Hmax	20 <sup>7</sup> / <sub>8</sub>		
L	42 <sup>5</sup> / <sub>8</sub>		
L1	44 <sup>1</sup> / <sub>8</sub>		
L2	7 <sup>1</sup> / <sub>2</sub>		
L3	29 <sup>1</sup> / <sub>8</sub>		
s	4xØ24		
Type	A		
Volumen	1/64		
x	1/8		

Weight	
Total weight	183.9 kg

Connections			
Suction nozzle		Discharge nozzle	
DN 100		DN 80	
PN 16		PN 16	
EN1092-2		EN1092-2	
C	15/16	C	7/8
D	9 <sup>1</sup> / <sub>16</sub>	D	7 <sup>7</sup> / <sub>8</sub>
df	6 <sup>3</sup> / <sub>16</sub>	df	5 <sup>3</sup> / <sub>16</sub>
DN	3 <sup>15</sup> / <sub>16</sub>	DN	3 <sup>1</sup> / <sub>8</sub>
K	7 <sup>1</sup> / <sub>16</sub>	K	6 <sup>5</sup> / <sub>16</sub>
L	8 x 19	L	8 x 19



Note:  
Weight and Dimensions of selected Hydrovar are NOT considered.  
Please refer to additional datasheet.

**Dimensions and weight without obligation**

Project	Xylect-20182283	Created by		Last update	1/11/2025
Block	NSCF80-200/750/L26UCC4 E4	Created on	1/11/2025		