

NSCS 100-250/75/P45VCC4

Technical data

Company name
Contact
Phone number
e-mail address

Operating data					
1	Pumpe type	Single head pump	Fluid	Water, pure	
2	No. of pumps	1	Operating temperature t A	°C	4
3	Nominal flow	m ³ /h 0	Max / Min Operating Temperature mech. Seal	°C	120 / -25
4	Nominal head	m 0	pH-value at t A		7
5	Static head	m 0	Density at t A	kg/m ³	1000
6	Inlet pressure	kPa 0	Kin. viscosity at t A	mm ² /s	1.569
7	Environmental temperature	°C 20	Vapor pressure at t A	kPa	100
8	Available system NPSH	m 0	Altitude		0

Pump data					
9	Lubrication	32			
10	Execution	Standard Design (Type A)			
11	Design	Horizontal			
12	Operating speed	1465 rpm	Stages	1	
13	Suction nozzle	DN125 / PN10/16 / EN1092-2	Impeller Ø	Max.	mm 259
14	Discharge nozzle	DN100 / PN10/16 / EN1092-2		designed	mm 237
15	Max. casing pressure	kPa	Flow	Min.	mm 213
16	Max. working pressure	kPa 174.4		Nominal	m ³ /h
17	Impeller type	Radial impeller		Max-	m ³ /h 210
18	Head H(Q=0)	m 18	Head	Min-	m ³ /h 23.7
19	Max. shaft power	kW 7.5		Nominal	m
20	Pump weight	kg	at Qmax	m	9
21	Total weight	kg 153.6	at Qmin	m	17.8
			Shaft power	kW	
			Efficiency	%	
			NPSH 3%	m	

Materials					
Pump			Shaft Seal		
22					
23	Volute Casing	Cast Iron, EN 1561 - GJL-250, ASTM Class 35	Single mechanical seal, without shaft sleeve		
24	Impeller	Cast Iron, EN 1561 - GJL-200, ASTM Class 30	eMG12 - Ø38mm	BQ7EGG-WA	
25	Casing Cover	Cast Iron, EN 1561 - GJL-250, ASTM Class 35	Mechanical seal diameter	38 mm	
26	Shaft	Stainless steel, 1.4057, AISI 431	1. Rotating ring	Carbon graphite resin impregnated	
27	Wear ring	Stainless steel, 1.4301, AISI 304	2. Stationary ring	SiC, silicon carbide, sintered press.less	
28	Impeller lock nut and washer	A4 (1.4401)	3. Secondary seal	Ethylene propylene rubber (EPDM)	
29	Impeller key	Stainless steel, 1.4571, AISI 316Ti	4. Springs	CrNiMo - Steel	
30	Fill and drain plugs	Galvanized carbon steel, EN 10277-3, AISI 1213 / 1215	5. Others	EPDM - WRAS	
31	Bearing bracket	Cast Iron, EN 1561 - GJL-250, ASTM Class 35	Gaskets of the pump	Ethylene propylene rubber (EPDM)	
32					
33					
34					
35					
36					
37					
38					
39					
40					
41					

Motor data					
Electrical and dimensional data refer to IE3 motor					
42	Manufacturer	Lowara			
43	Specific design	IE3 3ph Flange Motor - Premium Efficiency			
44	Type	PLM 132 B5 7,5 kW			
45	Rated power	7.5 kW	Rated current	15.2 A	
46	Nominal speed	1455 rpm	Rated voltage	400 V	
47	Frame size	132	Service factor	1	
48	Weight	kg 66.6	Degree of protection	IP55	

Remarks					
49					
50					
50					
52					

NSCS 100-250/75/P45VCC4

Performance curve

Company name
Contact
Phone number
e-mail address

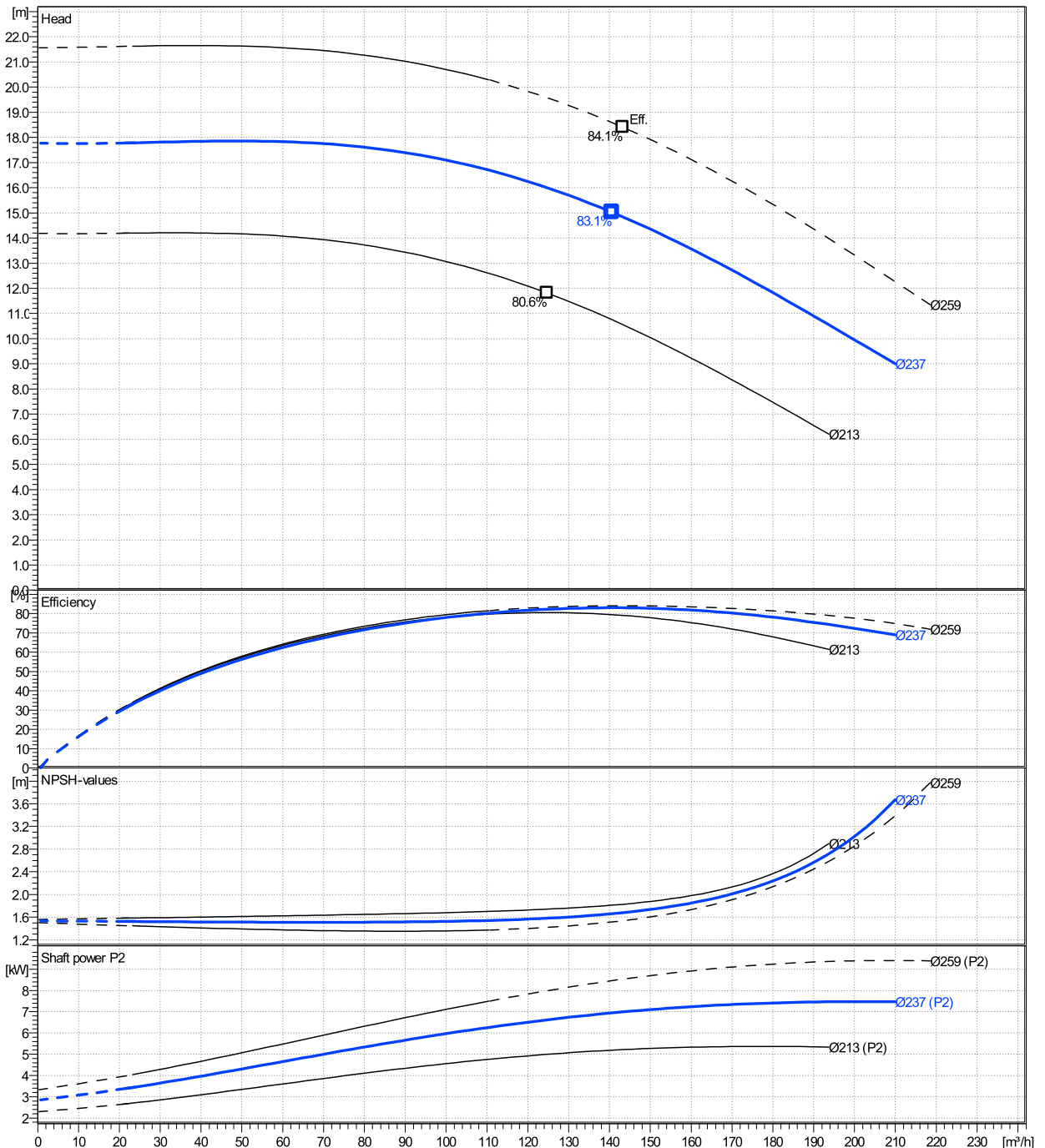
	Ø mm	Pump capacity			Pump head		Shaft power P2			Frequency	Hz	50
		Operating range Min. m³/h	Max. m³/h	η Max. m³/h	H(Q=0) m	η Max. m	P2(Q=0) kW	Max. kW	η Max. kW	Operating speed	rpm	1465
actual	237	23.7	210	141	17.8	15	7.48	6.94	Nominal flow	m³/h	0	
Min.	0	/	/	125	14.2	11.8	/	5	Nominal head	m	0	
Max.	259	/	/	143	21.6	18.4	/	8.53	Inlet pressure	kPa	0	
									Static head	m	0	

Power datas referred to:

hydr. Performance acceptance acc. To EN ISO 9906 Class Grade 3B

Water, pure [100%] ; 4°C; 1000kg/m³; 1.57mm²/s

MEI: >=0,70 - according to Ecodesign Directive 2009/125/EC and Regulation (EU) No.547/2012



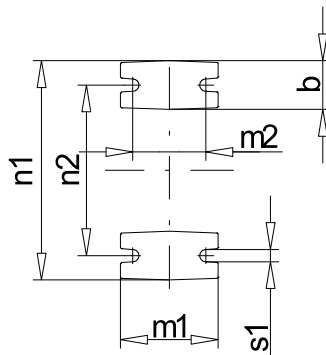
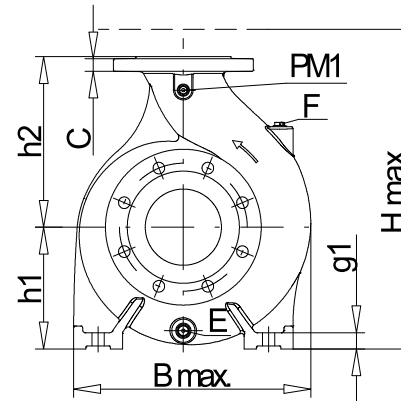
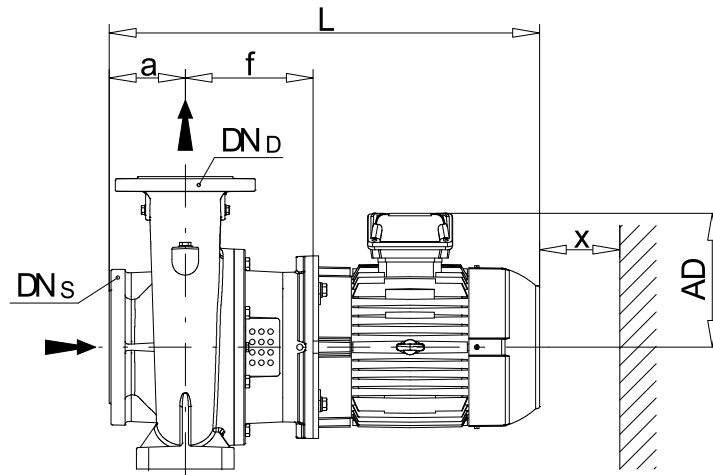
NSCS 100-250/75/P45VCC4

Dimensions

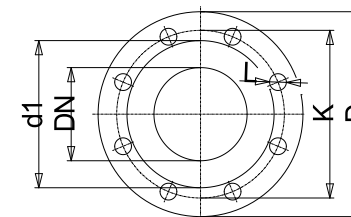
Company name
Contact
Phone number
e-mail address

Blockpump
Standard Design (Type A)
PLM 132 B5 7,5 kW

Electrical and dimensional data refer to IE3 motor



PM1...Pressure gauge connector
E...Drain
F....Filling



Value C, D may vary from Standard

Dimensions [mm]			
a	140	Volumen	0.16433
AD	191	x	140
b	80		
Bmax	431		
CTO	0		
DNd	100		
DNs	125		
E	3/8"		
f	210		
F	3/8"		
g1	26		
h1	225		
h2	280		
Hmax	505		
L	755		
m1	160		
m2	120		
n1	400		
n2	315		
P	300		
PM1	1/4"		
s1	19		
Trim	0		
Type	A		

Weight	
Total weight	153.6 kg

Connections			
Suction nozzle		Discharge nozzle	
DN125		DN100	
PN10/16		PN10/16	
EN1092-2		EN1092-2	
C	26	C	24
D	255	D	230
d1	184	d1	157
K	210	K	180
L	19	L	19
z	8	z	8

Dimensions and weight without obligation

Project	Xylect-20260347	Created by		Last update	11/27/2024
Block	NSCS 100-250/900/L25VCC4 E4	Created on	11/27/2024		