

# NSCS 40-250/150/P25VCS4

## Technical data

Company name  
Contact  
Phone number  
e-mail address

Operating data				
1	Pumpe type	Single head pump	Fluid	Water, pure
2	No. of pumps	1	Operating temperature t A	°C 4
3	Nominal flow	m³/h 0	Max / Min Operating Temperature mech. Seal	°C 120 / -25
4	Nominal head	m 0	pH-value at t A	7
5	Static head	m 0	Density at t A	kg/m³ 1000
6	Inlet pressure	kPa 0	Kin. viscosity at t A	mm²/s 1.569
7	Environmental temperature	°C 20	Vapor pressure at t A	kPa 100
8	Available system NPSH	m 0	Altitude	0

Pump data				
9	Lubrication	Standard, Grease lubrication [Std]		
10	Execution	2 poles motor		
11	Design	Horizontal		
12	Operating speed	2900 rpm	Stages	1
13	Suction nozzle	DN 65 /	PN 16 /	EN1092-2
14	Discharge nozzle	DN 40 /	PN 16 /	EN1092-2
15	Max. casing pressure	kPa		
16	Max. working pressure	kPa	725.2	
17	Impeller type	Radial impeller		
18	Head H(Q=0)	m	74	
19	Max. shaft power	kW	14.8	
20	Pump weight	kg		
21	Total weight	kg	147.0	

Materials				
22		<b>Pump</b>	<b>Shaft Seal</b>	
23	Volute Casing	Cast Iron	Single mechanical seal, without shaft sleeve	
24	Casing Cover	Cast Iron	eMG12 - Ø28mm	BQ7EGG-WA
25	Impeller	Fabricated Stainless Steel	Mechanical seal diameter	28 mm
26	Shaft	Stainless steel	1. Rotating ring	Carbon graphite resin impregnated
27	Wear ring	Stainless steel	2. Stationary ring	SiC, silicon carbide, sintered press.less
28	Impeller lock nut and washer	Stainless steel	3. Secondary seal	Ethylene propylene rubber (EPDM)
29	Impeller key	Stainless steel	4. Springs	CrNiMo - Steel
30	Fill and drain plugs	Stainless steel	5. Others	EPDM - WRAS
31			Gaskets of the pump	Ethylene propylene rubber (EPDM)
32				
33				
34				
35				
36				
37				
38				
39				
40				
41				

Motor data				
Electrical and dimensional data refer to IE3 motor				
42	Manufacturer	Lowara		
43	Specific design	IE3 3ph Flange Motor - Premium Efficiency		
44	Type	PLM 160 B35 15 kW		
45	Rated power	15 kW	Rated current	26.6 A
46	Nominal speed	2940 rpm	Rated voltage	400 V
47	Frame size	160	Service factor	1
48	Weight	kg 105.0	Degree of protection	IP55

Remarks				
49				
50				
50				
52				

Project	Xylect-20303810	Created by		Last update	12/6/2024
Block	NSCS 40-250/220/P25VCS4	Created on	12/6/2024		

# NSCS 40-250/150/P25VCS4

## Performance curve

Company name  
Contact  
Phone number  
e-mail address

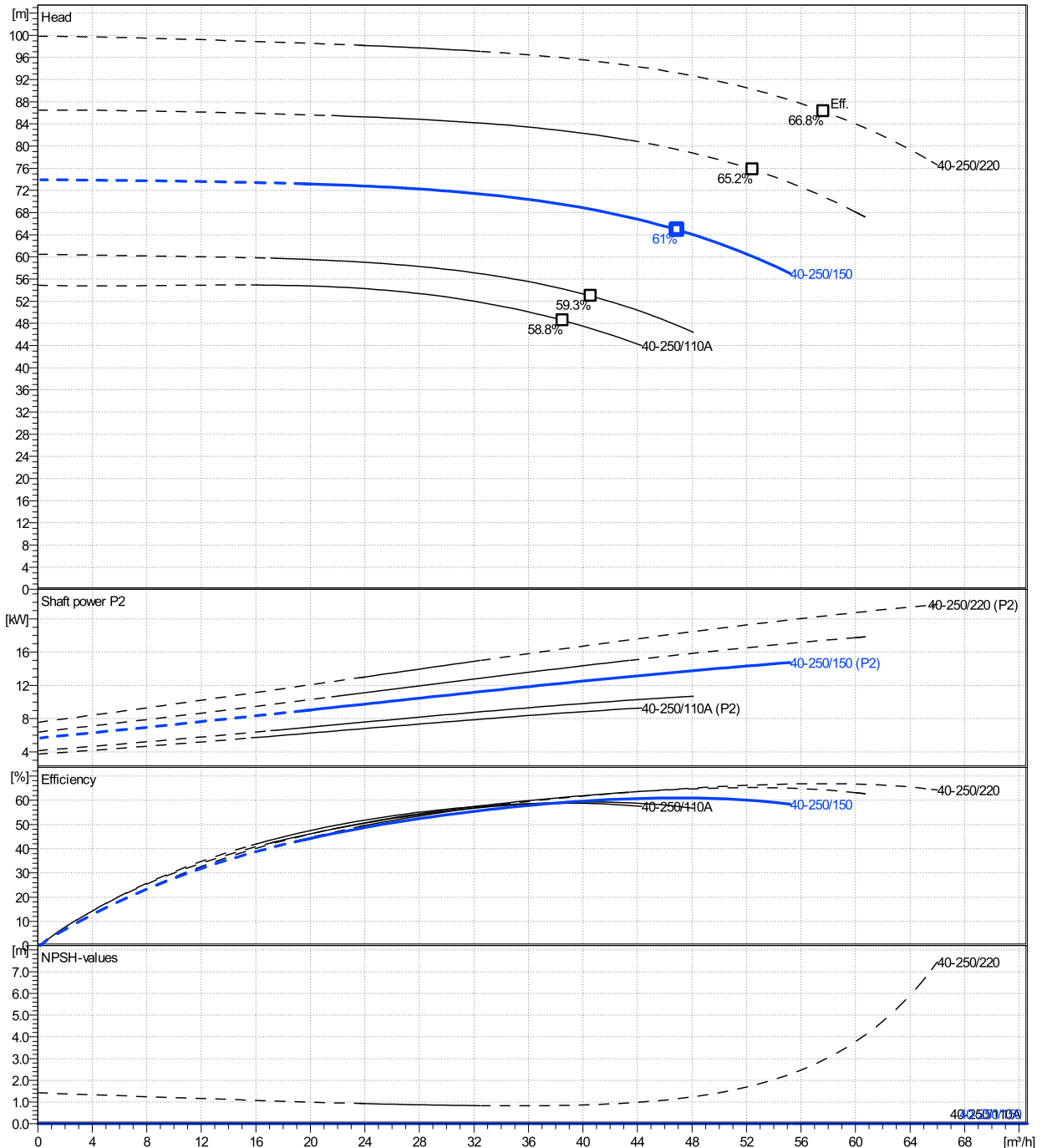
	Ø mm	Pump capacity Operating range			Pump head		Shaft power P2			Frequency	Hz	50
		Min. m³/h	Max. m³/h	η Max. m³/h	H(Q=0) m	η Max. m	P2(Q=0) kW	Max. kW	η Max. kW	Operating speed	rpm	2900
actual	228	20.1	55.2	46.9	73.9	64.9		14.8	13.6	Nominal flow	m³/h	0
Min.	0	/	/	38.5	54.9	48.5		/	8.67	Nominal head	m	0
Max.	257	/	/	57.7	99.8	86.3		/	20.3	Inlet pressure	kPa	0
										Static head	m	0

**Power datas referred to:**

hydr. Performance acceptance acc. To EN ISO 9906 Class Grade 3B

Water, pure [100%] ; 4°C; 1000kg/m³; 1.57mm²/s

MEI: >=,4



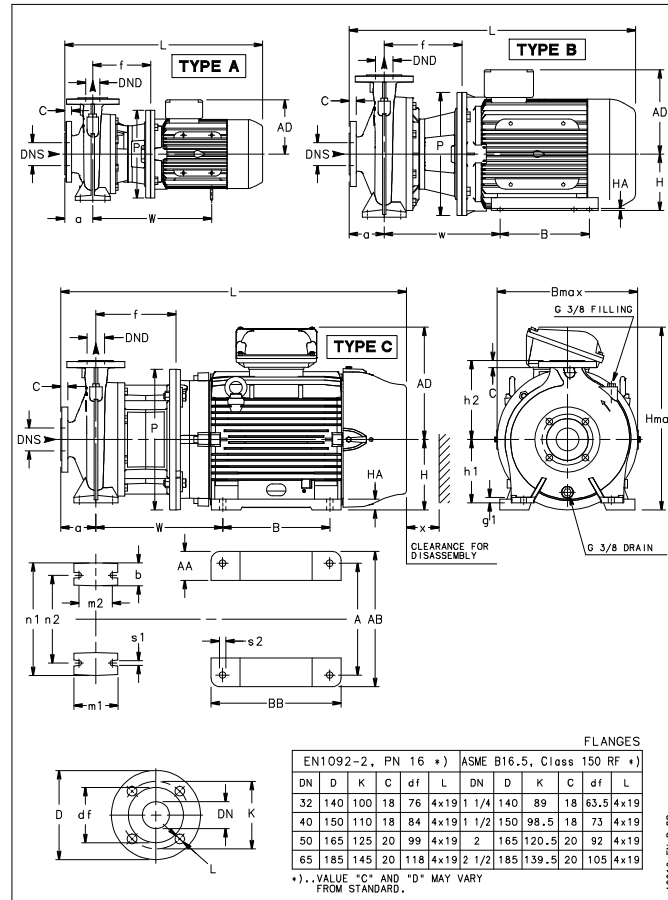
# NSCS 40-250/150/P25VCS4

## Dimensions

Company name  
Contact  
Phone number  
e-mail address

Blockpump B35  
2 poles motor  
PLM 160 B35 15 kW

Electrical and dimensional data refer to IE3 motor



### Dimensions [ mm ]

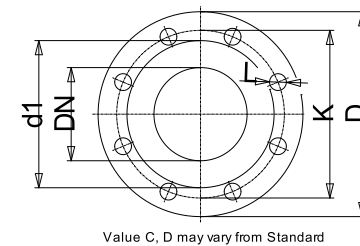
a	100
AD	240
b	65
Bmax	350
DNd	40
DNs	65
f	222
g1	16
h1	180
h2	225
Hmax	420
L	816
m1	125
m2	95
n1	320
n2	250
P	350
s1	14
Type	B
Volumen	0.11584
w	330
x	104

### Weight

<b>Total weight</b>	<b>147 kg</b>
---------------------	---------------

### Connections

Suction nozzle		Discharge nozzle	
DN 65		DN 40	
PN 16		PN 16	
EN1092-2		EN1092-2	
C	20	C	18
D	185	D	150
df	118	df	84
DN	65	DN	40
K	145	K	110
L	4 x 19	L	4 x 19



### Dimensions and weight without obligation

Project	Xylect-20303810
Block	NSCS 40-250/220/P25VCS4

Created by  
Created on 12/6/2024

Last update 12/6/2024