

NSCS 50-200/150/P25VCS4

Technical data

Company name
Contact
Phone number
e-mail address

Operating data				
1	Pumpe type	Single head pump	Fluid	Water, pure
2	No. of pumps	1	Operating temperature t A	°C 4
3	Nominal flow	m³/h 0	Max / Min Operating Temperature mech. Seal	°C 120 / -25
4	Nominal head	m 0	pH-value at t A	7
5	Static head	m 0	Density at t A	kg/m³ 1000
6	Inlet pressure	kPa 0	Kin. viscosity at t A	mm²/s 1.569
7	Environmental temperature	°C 20	Vapor pressure at t A	kPa 100
8	Available system NPSH	m 0	Altitude	0

Pump data				
9	Lubrication	Standard, Grease lubrication [Std]		
10	Execution	2 poles motor		
11	Design	Horizontal		
12	Operating speed	2900 rpm	Stages	1
13	Suction nozzle	DN 65 /	PN 16 /	EN1092-2
14	Discharge nozzle	DN 50 /	PN 16 /	EN1092-2
15	Max. casing pressure	kPa		
16	Max. working pressure	kPa	524.7	
17	Impeller type	Radial impeller		
18	Head H(Q=0)	m	53	
19	Max. shaft power	kW	14.9	
20	Pump weight	kg		
21	Total weight	kg	142.0	

		Impeller Ø		Flow		Head	
	Max.	mm	209				
	designed	mm	197				
	Min.	mm	168				
	Nominal	m³/h					
	Max-	m³/h	94.8				
	Min-	m³/h	23.8				
	Nominal	m					
	at Qmax	m	37.1				
	at Qmin	m	54.2				
	Shaft power	kW					
	Efficiency	%					
	NPSH 3%	m					

Materials				
22		Pump		Shaft Seal
23	Volute Casing	Cast Iron		Single mechanical seal, without shaft sleeve
24	Casing Cover	Cast Iron		eMG12 - Ø28mm
25	Impeller	Fabricated Stainless Steel		Mechanical seal diameter
26	Shaft	Stainless steel		28 mm
27	Wear ring	Stainless steel		1. Rotating ring
28	Impeller lock nut and washer	Stainless steel		Carbon graphite resin impregnated
29	Impeller key	Stainless steel		2. Stationary ring
30	Fill and drain plugs	Stainless steel		SiC, silicon carbide, sintered press. less
31				3. Secondary seal
32				Ethylene propylene rubber (EPDM)
33				4. Springs
34				CrNiMo - Steel
35				5. Others
36				EPDM - WRAS
37				Gaskets of the pump
38				Ethylene propylene rubber (EPDM)
39				
40				
41				

Motor data				
Electrical and dimensional data refer to IE3 motor				
42	Manufacturer	Lowara		
43	Specific design	IE3 3ph Flange Motor - Premium Efficiency		
44	Type	PLM 160 B35 15 kW		
45	Rated power	15 kW	Rated current	26.6 A
46	Nominal speed	2940 rpm	Rated voltage	400 V
47	Frame size	160	Service factor	1
48	Weight	kg 105.0	Degree of protection	IP55

Remarks				
49				
50				
51				
52				

NSCS 50-200/150/P25VCS4

Performance curve

Company name
Contact
Phone number
e-mail address

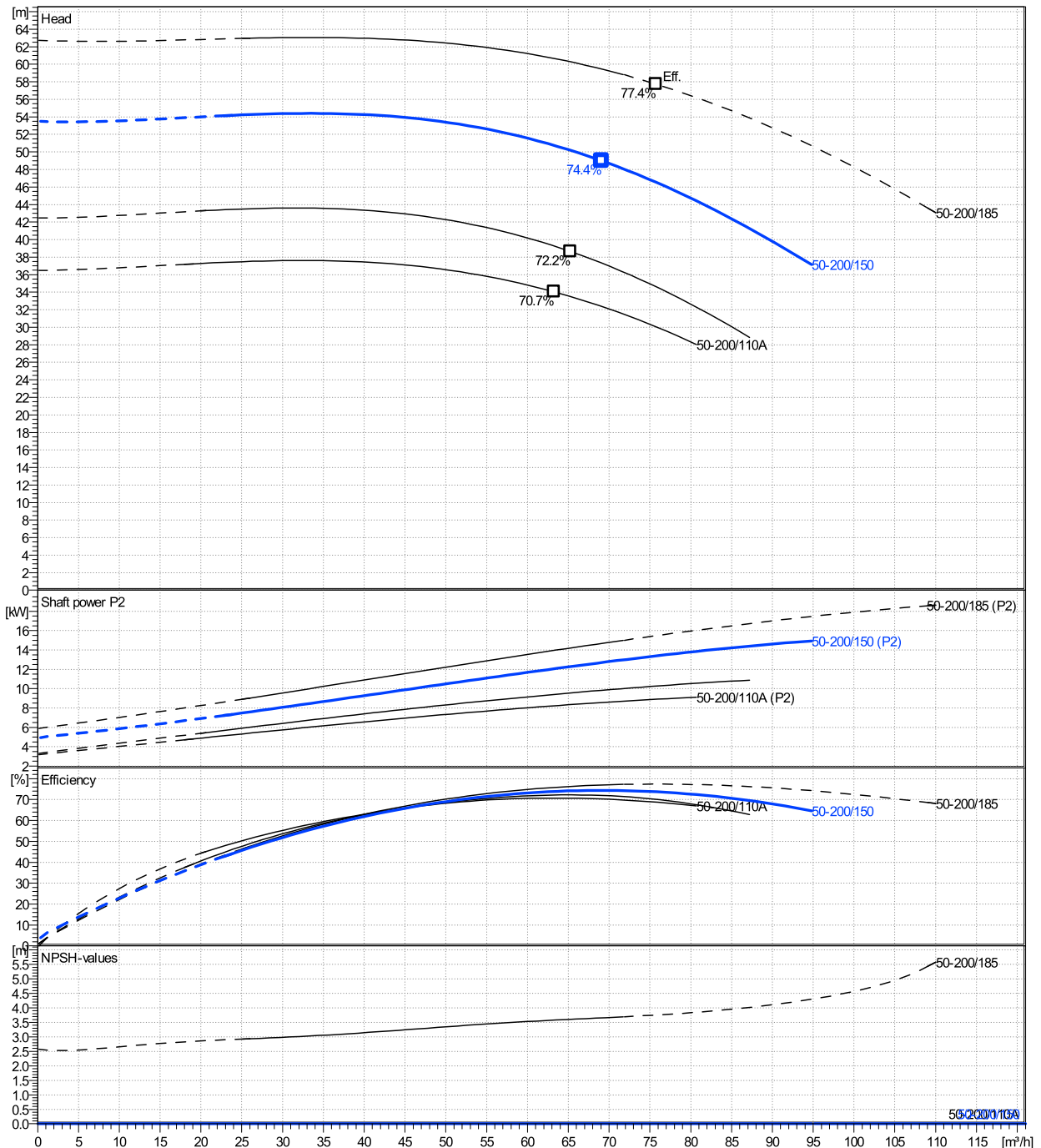
	Ø mm	Pump capacity			Pump head		Shaft power P2			Frequency	Hz	50
		Operating range Min. m³/h	Max. m³/h	η Max. m³/h	H(Q=0) m	η Max. m	P2(Q=0) kW	Max. kW	η Max. kW	Operating speed	rpm	2900
actual	197	23.8	94.8	69.1	53.5	49	14.9	12.7	Nominal flow	m³/h	0	
Min.	0	/	/	63.2	36.5	34	/	8.23	Nominal head	m	0	
Max.	209	/	/	75.8	62.7	57.7	/	15.5	Inlet pressure	kPa	0	
									Static head	m	0	

Power datas referred to:

hydr. Performance acceptance acc. To EN ISO 9906 Class Grade 3B

Water, pure [100%] ; 4°C; 1000kg/m³; 1.57mm²/s

MEI: >=0,4



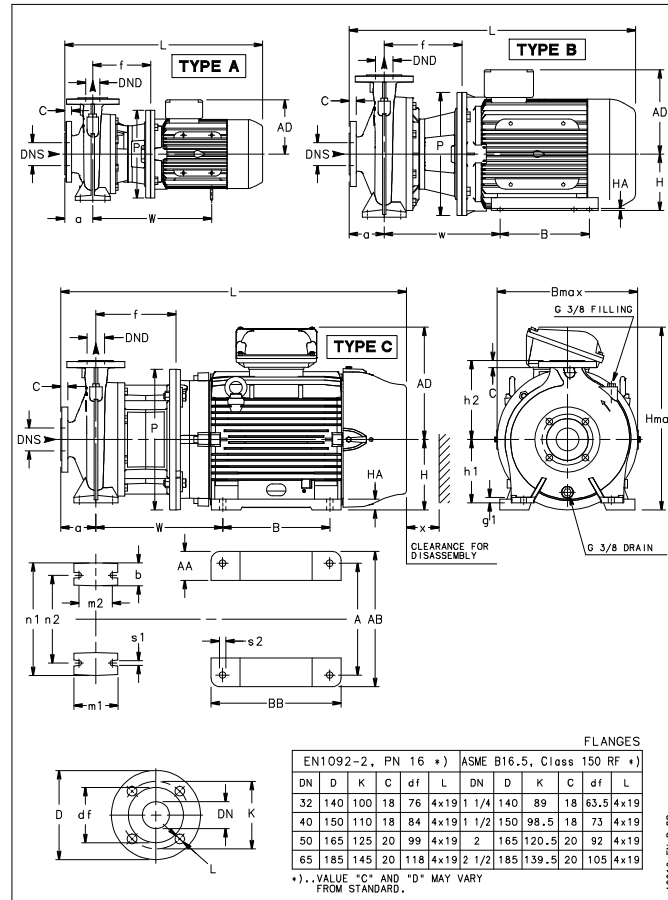
NSCS 50-200/150/P25VCS4

Dimensions

Company name
Contact
Phone number
e-mail address

Blockpump B35
2 poles motor
PLM 160 B35 15 kW

Electrical and dimensional data refer to IE3 motor



Dimensions [mm]

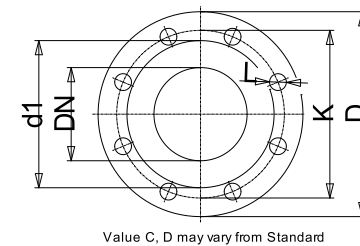
a	100
AD	240
b	50
Bmax	350
DNd	50
DNs	65
f	222
g1	14
h1	160
h2	200
Hmax	400
L	816
m1	100
m2	70
n1	265
n2	212
P	350
s1	14
Type	B
Volumen	0.099552
w	332
x	98

Weight

Total weight	142 kg
---------------------	---------------

Connections

Suction nozzle		Discharge nozzle	
DN 65		DN 50	
PN 16		PN 16	
EN1092-2		EN1092-2	
C	20	C	20
D	185	D	165
df	118	df	99
DN	65	DN	50
K	145	K	125
L	4 x 19	L	4 x 19



Dimensions and weight without obligation

Project	Xylect-20255621
Block	NSCS 50-200/185/P25VCS4

Created by
Created on 11/26/2024

Last update 11/26/2024