

# NSCS 65-250/450/L25VCC4

## Technical data

Company name  
Contact  
Phone number  
e-mail address

Operating data					
1	Pumpe type	Single head pump		Fluid	Water, pure
2	No. of pumps	1		Operating temperature t A	°C 4
3	Nominal flow	m³/h	0	Max / Min Operating Temperature mech. Seal	°C 120 / -25
4	Nominal head	m	0	pH-value at t A	7
5	Static head	m	0	Density at t A	kg/m³ 1000
6	Inlet pressure	kPa	0	Kin. viscosity at t A	mm²/s 1.569
7	Environmental temperature	°C	20	Vapor pressure at t A	kPa 100
8	Available system NPSH	m	0	Altitude	0

Pump data					
9	Lubrication	Standard, Grease lubrication [Std]			
10	Execution	2 poles motor			
11	Design	Horizontal			
12	Operating speed	2900 rpm	Stages	1	
13	Suction nozzle	DN 80	/	PN 16	/ EN1092-2
14	Discharge nozzle	DN 65	/	PN 16	/ EN1092-2
15	Max. casing pressure	kPa			
16	Max. working pressure	kPa	821.4		
17	Impeller type	Radial impeller			
18	Head H(Q=0)	m	84		
19	Max. shaft power	kW	43.9		
20	Pump weight	kg			
21	Total weight	kg	328.5		

					Impeller Ø	
					Max.	mm
					designed	258
					Min.	243
					Nominal	195
					Max-	215
					Min-	37.5
					Nominal	
					at Qmax	46.2
					at Qmin	87.7
					Shaft power	
					Efficiency	
					NPSH 3%	

Materials						
Pump			Shaft Seal			
22				Single mechanical seal, without shaft sleeve		
23	Volute Casing	Cast Iron		eMG12 - Ø38mm	BQ7EGG-WA	
24	Casing Cover	Cast Iron		Mechanical seal diameter	38 mm	
25	Impeller	Cast Iron		1. Rotating ring	Carbon graphite resin impregnated	
26	Shaft	Stainless steel		2. Stationary ring	SiC, silicon carbide, sintered press.less	
27	Wear ring	Stainless steel		3. Secondary seal	Ethylene propylene rubber (EPDM)	
28	Impeller lock nut and washer	Stainless steel		4. Springs	CrNiMo - Steel	
29	Impeller key	Stainless steel		5. Others	EPDM - WRAS	
30	Fill and drain plugs	Stainless steel		Gaskets of the pump	Ethylene propylene rubber (EPDM)	
31						
32						
33						
34						
35						
36						
37						
38						
39						
40						
41						

Motor data					
Electrical and dimensional data refer to IE3 motor					
42	Manufacturer	Lowara			
43	Specific design	IE3 3ph Flange Motor - Premium Efficiency			
44	Type	3MAS 225 M B35 45 kW			
45	Rated power	45 kW	Rated current	76.4 A	
46	Nominal speed	2975 rpm	Rated voltage	400 V	
47	Frame size	225 M	Service factor	1	
48	Weight	kg 274.5	Degree of protection	IP55	

Remarks					
49					
50					
50					
52					

# NSCS 65-250/450/L25VCC4

## Performance curve

Company name  
Contact  
Phone number  
e-mail address

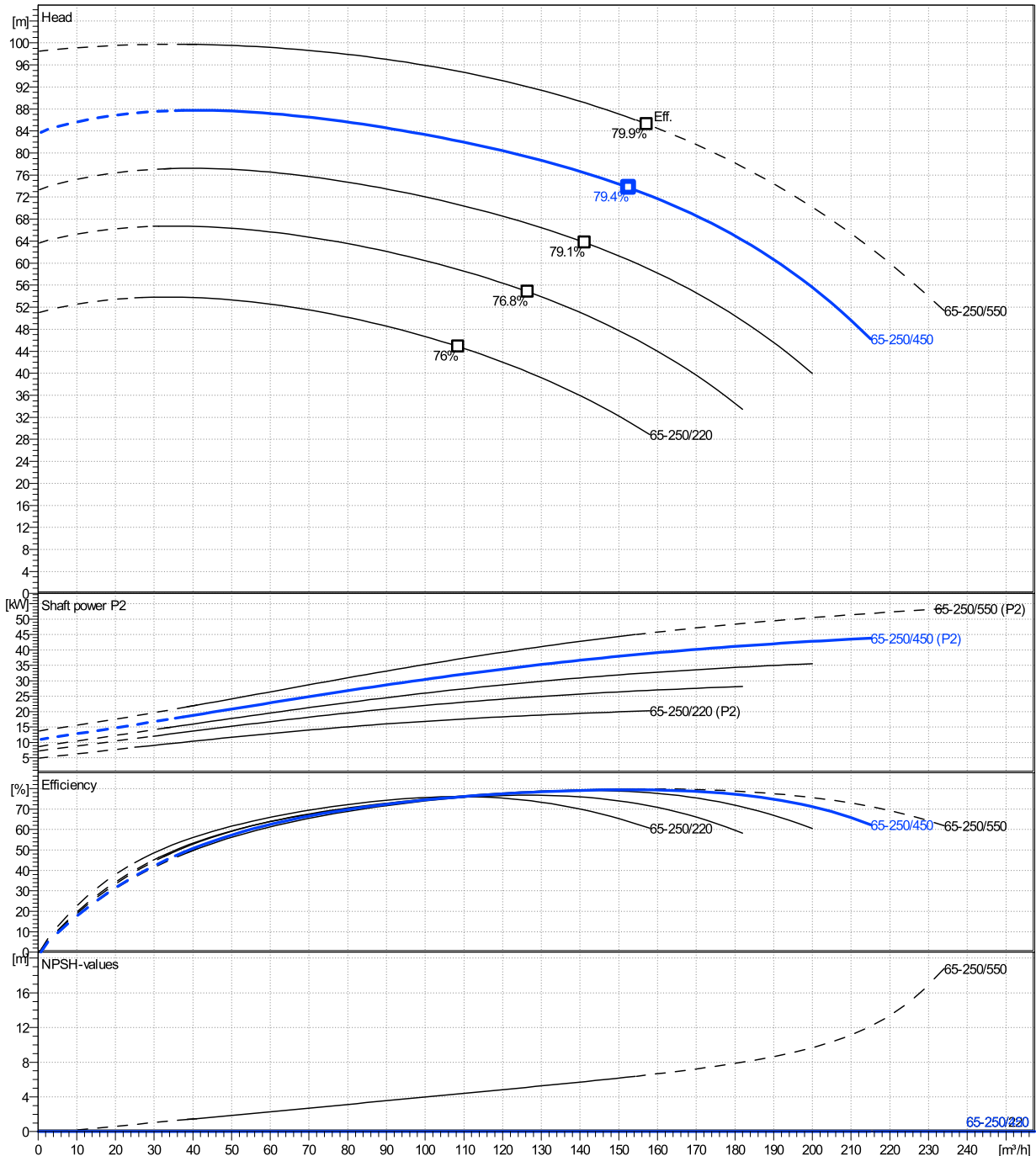
	Ø mm	Pump capacity			Pump head		Shaft power P2			Frequency	Hz	
		Operating range Min. m³/h	Max. m³/h	η Max. m³/h	H(Q=0) m	η Max. m	P2(Q=0) kW	Max. kW	η Max. kW	Operating speed	rpm	
actual	243	37.5	215	153	83.7	73.7		43.9	38.3	Nominal flow	m³/h	0
Min.	0	/	/	109	51	44.8		/	17.5	Nominal head	m	0
Max.	258	/	/	157	98.5	85.2		/	45.4	Inlet pressure	kPa	0
										Static head	m	0

**Power datas referred to:**

Water, pure [100%] ; 4°C; 1000kg/m³; 1.57mm²/s

**hydr. Performance acceptance acc. To EN ISO 9906 Class Grade 3B**

MEI: >=0,4



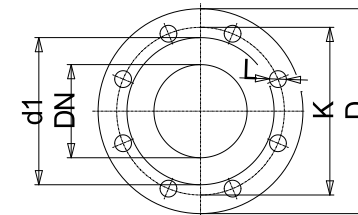
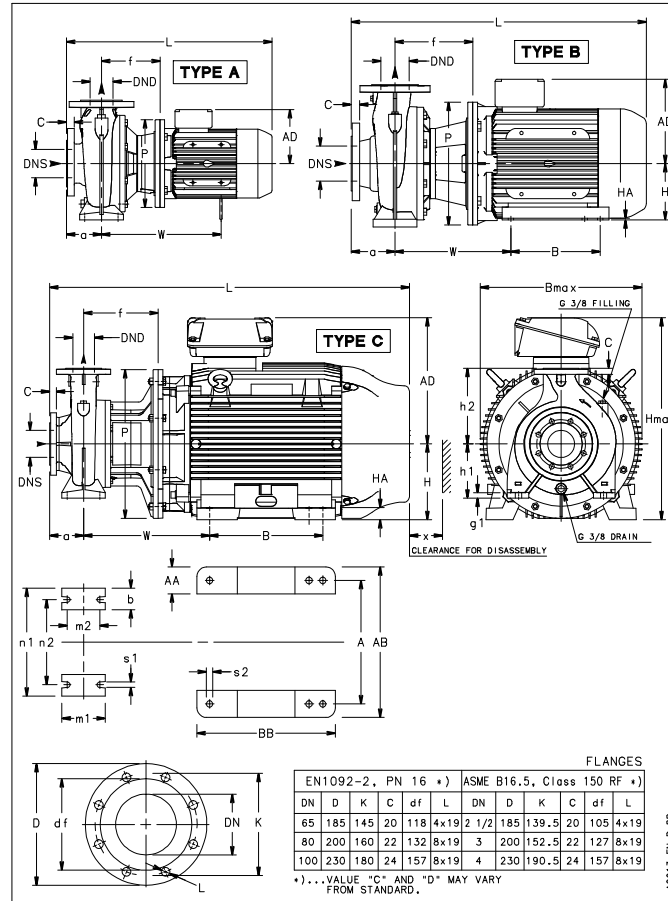
# NSCS 65-250/450/L25VCC4

## Dimensions

Company name  
Contact  
Phone number  
e-mail address

Blockpump B35  
2 poles motor  
3MAS 225 M B35 45 kW

Electrical and dimensional data refer to IE3 motor



Value C, D may vary from Standard

### Dimensions [ mm ]

a	100
AD	323
b	80
Bmax	460
Bmax	470
DNd	65
DNS	80
f	246
g1	21
h1	200
h2	250
Hmax	523
L	1047
m1	160
m2	120
n1	360
n2	280
P	450
s1	20
Type	C
Volumen	0.25189
w	395
x	130

### Weight

<b>Total weight</b>	<b>328.5 kg</b>
---------------------	-----------------

### Connections

Suction nozzle		Discharge nozzle	
DN 80		DN 65	
PN 16		PN 16	
EN1092-2		EN1092-2	
C	22	C	20
D	200	D	185
df	132	df	118
DN	80	DN	65
K	160	K	145
L	8 x 19	L	4 x 19

### Dimensions and weight without obligation

Project	Xylect-20255621
Block	NSCS 65-250/550/L25VCC4

Created by  
Created on 11/26/2024

Last update 11/26/2024