

# NSCS100-200/750/L26UCC4 E4

## Technical data

Company name  
Contact  
Phone number  
e-mail address

Operating data				
1	Pumpe type	Single head pump	Fluid	Water, pure
2	No. of pumps	1	Operating temperature at t A	°F 39.2
3	Nominal flow	US g.p.m. 0	Max / Min Operating Temperature mech. Seal	°F 120 / -25
4	Nominal head	ft 0	pH-value at t A	7
5	Static head	ft 0	Density at t A	lb/ft <sup>3</sup> 62.4
6	Inlet pressure	psi 0	Kin. viscosity at t A	ft <sup>2</sup> /s 1.689E-5
7	Environmental temperature	°F 68	Vapor pressure at t A	psi 14.5
8	Available system NPSH	ft 0	Altitude	0

Pump data				
9	Lubrication	32		
10	Execution	Standard Design (Type C)		
11	Design	Horizontal		
12	Operating speed	3570 rpm	Stages	1
13	Suction nozzle	DN125 / PN10/16 / EN1092-2	Impeller Ø	Max. inch 8 3/4
14	Discharge nozzle	DN100 / PN10/16 / EN1092-2		designed inch 8 3/16
15	Max. casing pressure	psi	Flow	Min. inch 7 9/16
16	Max. working pressure	psi 118.5		Nominal US g.p.m.
17	Impeller type	Radial impeller		Max- US g.p.m. 1836
18	Head H(Q=0)	ft 270	Head	Min- US g.p.m. 334.6
19	Max. shaft power	hp 95.9		Nominal ft
20	Pump weight	kg		at Qmax ft 151.1
21	Total weight	lb On demand	Shaft power hp	at Qmin ft 272.4
			Efficiency %	
			NPSH 3%	

Materials				
Pump		Shaft Seal		
22				
23	Volute Casing	Cast Iron, EN 1561 - GJL-250, ASTM Class 35		Single mechanical seal, without shaft sleeve
24	Impeller	Cast Iron, EN 1561 - GJL-200, ASTM Class 30		eMG12 - Ø38mm BQ7EGG-WA
25	Casing Cover	Cast Iron, EN 1561 - GJL-250, ASTM Class 35		Mechanical seal diameter 1 1/2 inch
26	Shaft	Stainless steel, 1.4057, AISI 431		1. Rotating ring Carbon graphite resin impregnated
27	Wear ring	Stainless steel, 1.4301, AISI 304		2. Stationary ring SiC, silicon carbide, sintered press.less
28	Impeller lock nut and washer	A4 (1.4401)		3. Secondary seal Ethylene propylene rubber (EPDM)
29	Impeller key	Stainless steel, 1.4571, AISI 316Ti		4. Springs CrNiMo - Steel
30	Fill and drain plugs	Galvanized carbon steel, EN 10277-3, AISI 1213 / 1215		5. Others EPDM - WRAS
31	Bearing bracket	Cast Iron, EN 1561 - GJL-250, ASTM Class 35		Gaskets of the pump Ethylene propylene rubber (EPDM)
32				
33				
34				
35				
36				
37				
38				
39				
40				
41				

Motor data				
Electrical and dimensional data refer to IE4 motor				
42	Manufacturer	Lowara		
43	Specific design	IE4 3ph Flange Motor - Super Premium Efficiency		
44	Type	3MGS 280 S B35 75 kW E4		
45	Rated power	100.58 hp	Rated current	135 A
46	Nominal speed	3582 rpm	Rated voltage	380 V
47	Frame size	280 S	Service factor	1
48	Weight	lb 1,373.0	Degree of protection	IP55

Remarks				
49				
50				
50				
52				

# NSCS100-200/750/L26UCC4 E4

## Performance curve

Company name  
Contact  
Phone number  
e-mail address

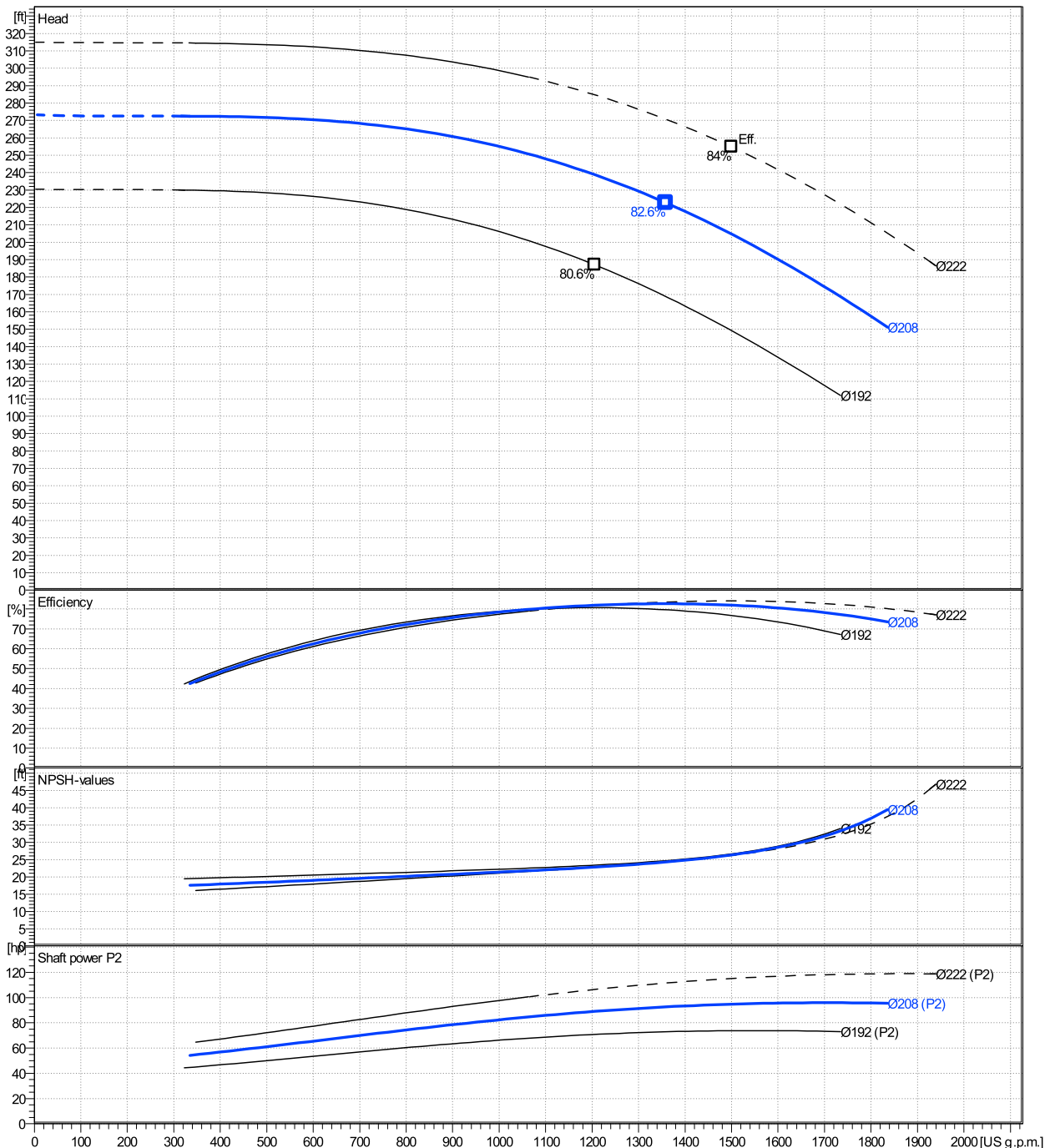
	Ø mm	Pump capacity Operating range η			Pump head η		Shaft power P2 η			Frequency	Hz	
		Min. US g.p.m.	Max. US g.p.m.	Max. US g.p.m.	H(Q=0) ft	Max. ft	P2(Q=0) hp	Max. hp	Max. hp	Operating speed	rpm	
actual	8 3/16	335	1840	1360	273	223		95.9	92.6	Nominal flow	US g.p.m.	0
Min.	0	/	/	1210	231	187		/	70.8	Nominal head	ft	0
Max.	8 3/4	/	/	1500	315	255		/	115	Inlet pressure	psi	0
										Static head	ft	0

**Power datas referred to:**

hydr. Performance acceptance acc. To EN ISO 9906 Class Grade 3B

Water, pure [100%] ; 39.2°F; 62.4lb/ft³; 1.69E-5ft²/s

MEI: >=0,70 - according to Ecodesign Directive 2009/125/EC and Regulation (EU) No.547/2012



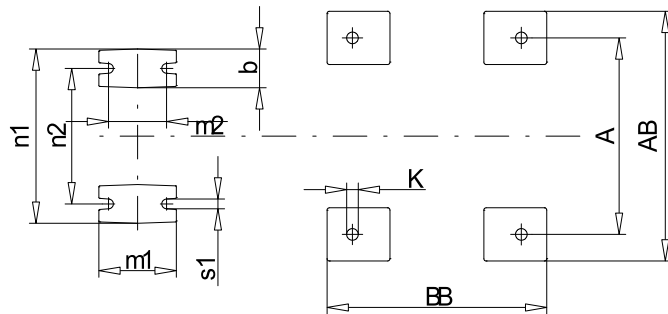
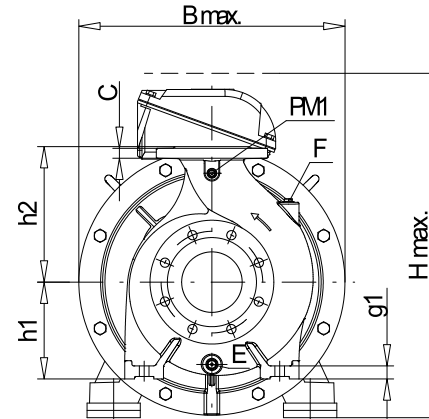
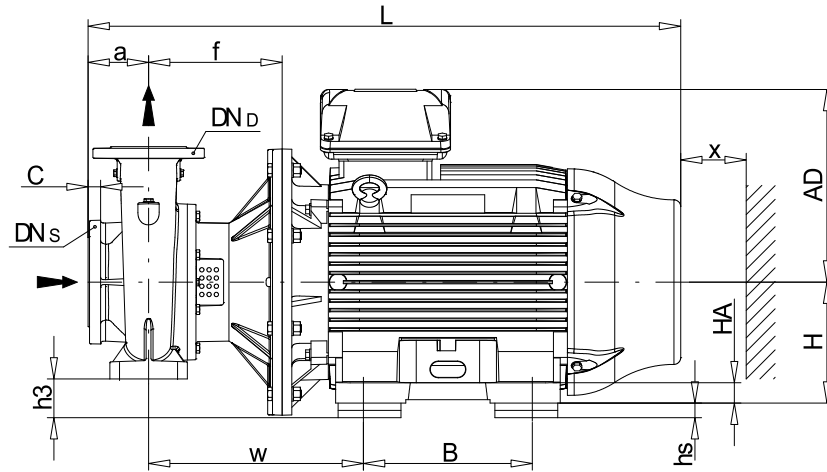
# NSCS100-200/750/L26UCC4 E4

## Dimensions

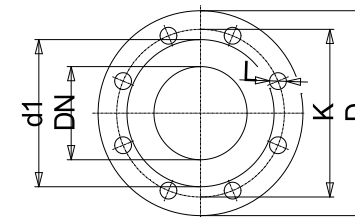
Company name  
Contact  
Phone number  
e-mail address

Blockpump  
Standard Design (Type C)  
3MGS 280 S B35 75 kW E4

Electrical and dimensional data refer to IE4 motor



PM1...Pressure gauge connector  
E...Drain  
F...Filling



Value C, D may vary from Standard

Dimensions [ inch ]			
a	4 <sup>15</sup> / <sub>16</sub>	m1	6 <sup>5</sup> / <sub>16</sub>
A	18	m2	4 <sup>3</sup> / <sub>4</sub>
AA	4 <sup>5</sup> / <sub>16</sub>	n1	14 <sup>3</sup> / <sub>16</sub>
AB	23 <sup>7</sup> / <sub>8</sub>	n2	11 <sup>1</sup> / <sub>32</sub>
AD	16 <sup>1</sup> / <sub>4</sub>	P	21 <sup>5</sup> / <sub>8</sub>
B	14 <sup>1</sup> / <sub>2</sub>	PM1	1/4"
b	3 <sup>1</sup> / <sub>8</sub>	s1	3/4
BB	17 <sup>5</sup> / <sub>16</sub>	Trim	
Bmax	21 <sup>5</sup> / <sub>8</sub>	Type	C
CTO		w	18 <sup>3</sup> / <sub>8</sub>
DNd	3 <sup>15</sup> / <sub>16</sub>	x	3 <sup>1</sup> / <sub>8</sub>
DNs	4 <sup>15</sup> / <sub>16</sub>		
E	3/8"		
f	10 <sup>7</sup> / <sub>8</sub>		
F	3/8"		
g1	1 <sup>1</sup> / <sub>32</sub>		
H	11 <sup>1</sup> / <sub>32</sub>		
h1	7 <sup>1</sup> / <sub>8</sub>		
h2	11 <sup>1</sup> / <sub>32</sub>		
h3	3 <sup>1</sup> / <sub>8</sub>		
HA	1 <sup>3</sup> / <sub>4</sub>		
Hmax	24 <sup>1</sup> / <sub>8</sub>		
hs			
K	1 <sup>5</sup> / <sub>16</sub>		

Weight	
Total weight	On demand kg

Connections			
Suction nozzle		Discharge nozzle	
DN125		DN100	
PN10/16		PN10/16	
EN1092-2		EN1092-2	
C	1 <sup>1</sup> / <sub>32</sub>	C	1 <sup>5</sup> / <sub>16</sub>
D	10 <sup>1</sup> / <sub>16</sub>	D	9 <sup>1</sup> / <sub>16</sub>
d1	7 <sup>1</sup> / <sub>4</sub>	d1	6 <sup>3</sup> / <sub>16</sub>
K	8 <sup>1</sup> / <sub>4</sub>	K	7 <sup>1</sup> / <sub>16</sub>
L	3/4	L	3/4
Z	5/16	Z	5/16

### Dimensions and weight without obligation

Project	Xylect-20178897	Created by		Last update	1/10/2025
Block	NSCS100-200/900/L26UCC4 E4	Created on	1/10/2025		