

NSCS150-315/450/L46UCC4

Technical data

Company name
Contact
Phone number
e-mail address

Operating data						
1	Pumpe type	Single head pump		Fluid	Water, pure	
2	No. of pumps	1		Operating temperature at t A	°F	39.2
3	Nominal flow	US g.p.m.	0	Max / Min Operating Temperature mech. Seal	°F	120 / -25
4	Nominal head	ft	0	pH-value at t A		7
5	Static head	ft	0	Density at t A	lb/ft ³	62.4
6	Inlet pressure	psi	0	Kin. viscosity at t A	ft ² /s	1.689E-5
7	Environmental temperature	°F	68	Vapor pressure at t A	psi	14.5
8	Available system NPSH	ft	0	Altitude		0

Pump data						
9	Lubrication	42				
10	Execution	Standard Design (Type B)				
11	Design	Horizontal				
12	Operating speed	1775 rpm	Stages	1		
13	Suction nozzle	DN200	/	PN16	/ EN1092-2	
14	Discharge nozzle	DN150	/	PN10/16	/ EN1092-2	
15	Max. casing pressure	psi				
16	Max. working pressure	psi	51.2			
17	Impeller type	Radial impeller				
18	Head H(Q=0)	ft	120			
19	Max. shaft power	hp	59.6			
20	Pump weight	kg				
21	Total weight	lb	On demand			

	Impeller Ø	Max.	inch	13 1/8
		designed	inch	10 15/16
		Min.	inch	10 15/16
		Nominal US g.p.m.		
	Flow	Max-	US g.p.m.	2654.9
		Min-	US g.p.m.	298.1
	Head	Nominal		
		at Qmax	ft	58.3
		at Qmin	ft	117.9
	Shaft power	hp		
	Efficiency	%		
	NPSH 3%	ft		

Materials						
	Pump			Shaft Seal		
23	Volute Casing	Cast Iron, EN 1561 - GJL-250, ASTM Class 35			Single mechanical seal, without shaft sleeve	
24	Impeller	Cast Iron, EN 1561 - GJL-200, ASTM Class 30			eMG12 - Ø48mm	BQ7EGG-WA
25	Casing Cover	Cast Iron, EN 1561 - GJL-250, ASTM Class 35			Mechanical seal diameter	1 7/8 inch
26	Shaft	Stainless steel, 1.4057, AISI 431			1. Rotating ring	Carbon graphite resin impregnated
27	Wear ring	Stainless steel, 1.4301, AISI 304			2. Stationary ring	SiC, silicon carbide, sintered press.less
28	Impeller lock nut and washer	A4 (1.4401)			3. Secondary seal	Ethylene propylene rubber (EPDM)
29	Impeller key	Stainless steel, 1.4571, AISI 316Ti			4. Springs	CrNiMo - Steel
30	Fill and drain plugs	Galvanized carbon steel, EN 10277-3, AISI 1213 / 1215			5. Others	EPDM - WRAS
31	Bearing bracket	Cast Iron, EN 1561 - GJL-250, ASTM Class 35			Gaskets of the pump	Ethylene propylene rubber (EPDM)
32						
33						
34						
35						
36						
37						
38						
39						
40						
41						

Motor data					
Electrical and dimensional data refer to IE3 motor					
42	Manufacturer	Lowara			
43	Specific design	IE3 3ph Flange Motor - Premium Efficiency			
44	Type	3MAS 225 M B35 45 kW			
45	Rated power	60.346 hp	Rated current	83.1 A	
46	Nominal speed	1770 rpm	Rated voltage	380 V	
47	Frame size	225 M	Service factor	1	
48	Weight	lb 629.6	Degree of protection	IP55	

Remarks					
49					
50					
50					
52					

NSCS150-315/450/L46UCC4

Performance curve

Company name
Contact
Phone number
e-mail address

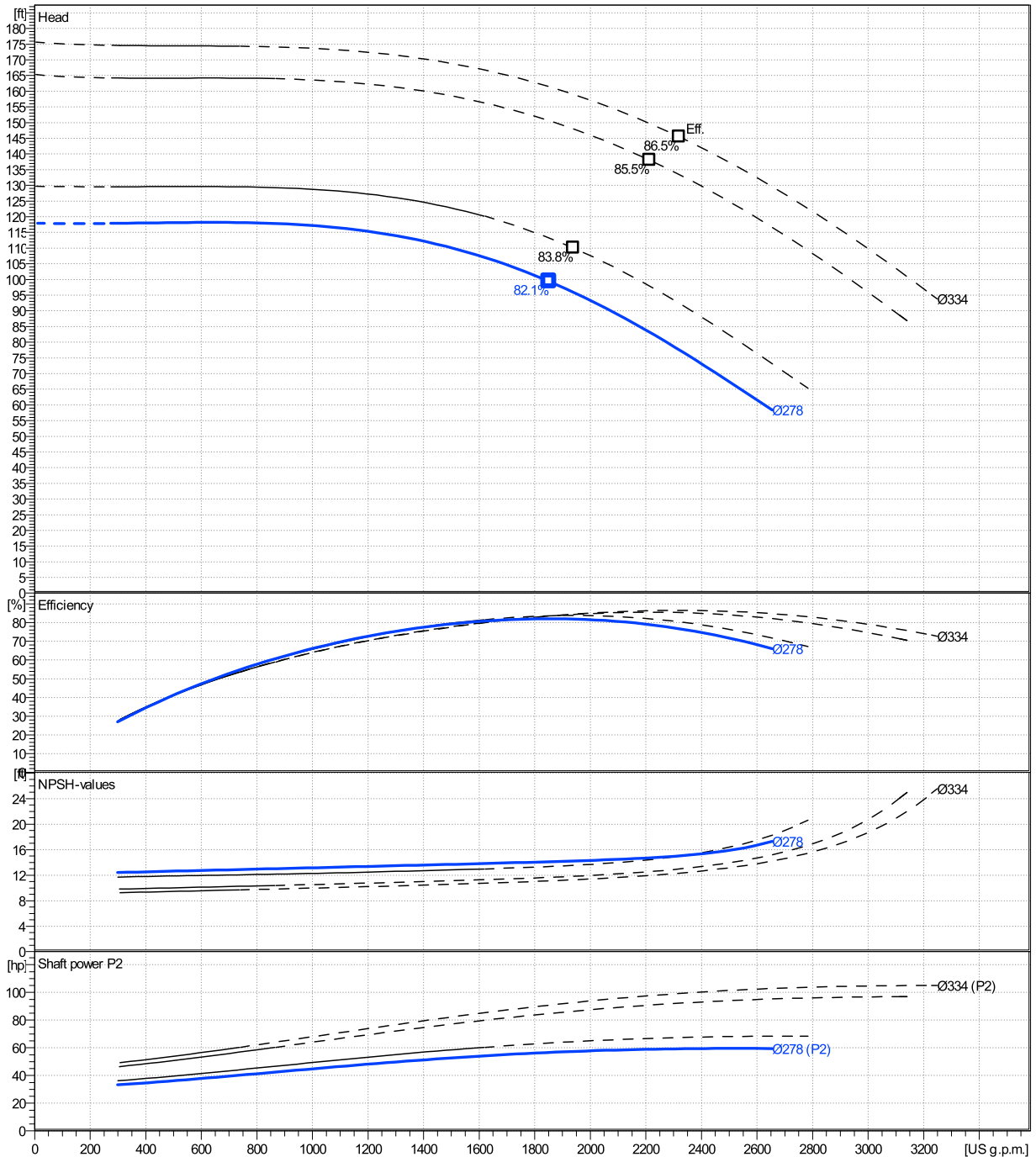
	Ø mm	Pump capacity			Pump head		Shaft power P2			Frequency		Hz	60
		Operating range Min. US g.p.m.	Max. US g.p.m.	η Max. US g.p.m.	H(Q=0) ft	η Max. ft	P2(Q=0) hp	Max. hp	η Max. hp	Operating speed rpm	Nominal flow US g.p.m.		
actual	10 15/16 298	2650	1850	118	99.4	59.6	56.7	0	1775	0	0	0	
Min.	0	/	/	1850	118	/	56.7	0	0	0	0	0	
Max.	13 1/8	/	/	2320	176	145	/	99.2	0	0	0	0	

Power datas referred to:

hydr. Performance acceptance acc. To EN ISO 9906 Class Grade 3B

Water, pure [100%]; 39.2°F; 62.4lb/ft³; 1.69E-5ft²/s

MEI: 0,58 - according to Ecodesign Directive 2009/125/EC and Regulation (EU) No.547/2012



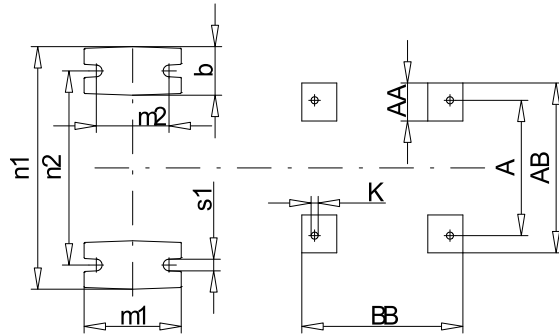
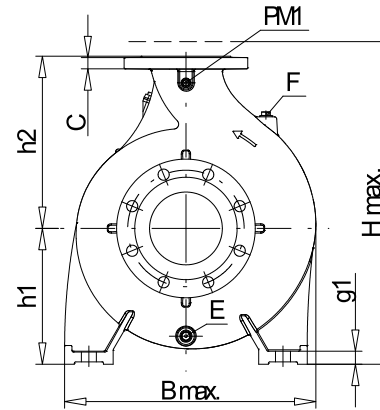
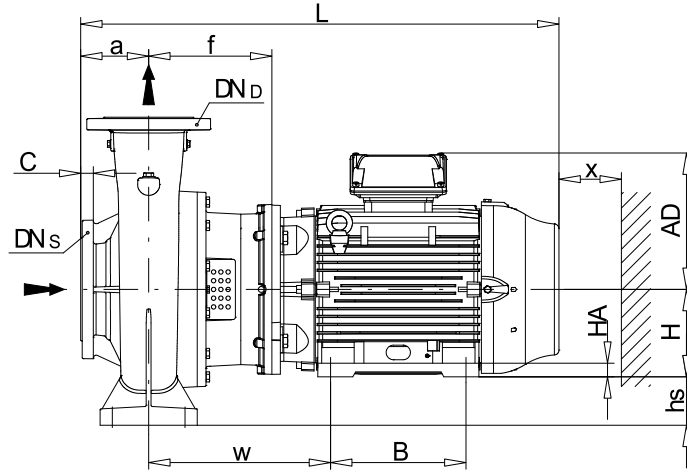
NSCS150-315/450/L46UCC4

Dimensions

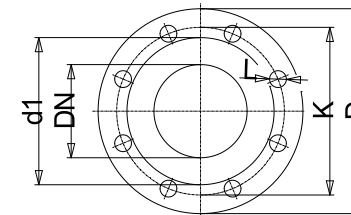
Company name
Contact
Phone number
e-mail address

Blockpump
Standard Design (Type B)
3MAS 225 M B35 45 kW

Electrical and dimensional data refer to IE3 motor



PM1...Pressure gauge connector
E...Drain
F...Filling



Value C, D may vary from Standard

Dimensions [inch]			
a	6 ⁵ / ₁₆	m1	7 ⁷ / ₈
A	14 ¹ / ₃₂	m2	5 ⁷ / ₈
AA	3 ⁵ / ₁₆	n1	21 ⁵ / ₈
AB	18 ¹ / ₂	n2	17 ¹¹ / ₁₆
AD	12 ¹¹ / ₁₆	P	17 ¹¹ / ₁₆
b	3 ¹⁵ / ₁₆	PM1	1/4"
B	12 ¹ / ₄	s1	7/8
BB	14 ³ / ₁₆	Trim	B
Bmax	23 ¹ / ₁₆	Type	w
CTO			x
DNd	5 ⁷ / ₈		
DNs	7 ⁷ / ₈		
E	3/8"		
f	11 ³ / ₁₆		
F	3/8"		
g1	1 ¹ / ₃₂		
H	8 ⁷ / ₈		
h1	11 ¹ / ₃₂		
h2	15 ³ / ₄		
h3			
HA	1 ³ / ₁₆		
Hmax	26 ³ / ₄		
hs	2 ² / ₁₆		
K	3/4		

Weight	
Total weight	On demand kg

Connections			
Suction nozzle		Discharge nozzle	
DN200		DN150	
PN16		PN10/16	
EN1092-2		EN1092-2	
C	1 ³ / ₁₆	C	1 ¹ / ₃₂
D	13 ⁹ / ₁₆	D	11 ¹ / ₄
d1	10 ¹ / ₂	d1	8 ⁵ / ₁₆
K	11 ⁵ / ₈	K	9 ⁷ / ₁₆
L	7/8	L	7/8
Z	1/2	Z	5/16

Dimensions and weight without obligation

Project	Xylect-20178897	Created by		Last update	1/10/2025
Block	NSCS150-315/900/L46UCC4 E4	Created on	1/10/2025		