

NSCS50-315/75/P46PCC4

Technical data

Company name
Contact
Phone number
e-mail address

Operating data					
1	Pumpe type	Single head pump		Fluid	Water, pure
2	No. of pumps	1		Operating temperature t A	°F 39.2
3	Nominal flow	US g.p.m.	0	Max / Min Operating Temperature mech. Seal	°F 120 / -25
4	Nominal head	ft	0	pH-value at t A	7
5	Static head	ft	0	Density at t A	lb/ft ³ 62.4
6	Inlet pressure	psi	0	Kin. viscosity at t A	ft ² /s 1.689E-5
7	Environmental temperature	°F	68	Vapor pressure at t A	psi 14.5
8	Available system NPSH	ft	0	Altitude	0

Pump data					
9	Lubrication	32			
10	Execution				
11	Design	Horizontal		Impeller Ø	Max. inch 12 11/16
12	Operating speed	1765 rpm	Stages 1		designed inch 10 1/4
13	Suction nozzle	DN65 / PN10/16 / EN1092-2			Min. inch 10 1/4
14	Discharge nozzle	DN50 / PN10/16 / EN1092-2		Flow	Nominal US g.p.m.
15	Max. casing pressure	psi			Max- US g.p.m. 290.6
16	Max. working pressure	psi	48.2	Min- US g.p.m. 46.2	
17	Impeller type	Radial impeller		Head	Nominal ft
18	Head H(Q=0)	ft	110		at Qmax ft 68.5
19	Max. shaft power	hp	9.7		at Qmin ft 110.6
20	Pump weight	kg		Shaft power	hp
21	Total weight	lb	329.8	Efficiency	%
				NPSH 3%	ft

Materials					
Pump			Shaft Seal		
22				Single mechanical seal, without shaft sleeve	
23	Volute Casing	Cast Iron, EN 1561 - GJL-250, ASTM Class 35		eMG12 - Ø38mm	BQ7EGG-WA
24	Impeller	Cast Iron, EN 1561 - GJL-200, ASTM Class 30		Mechanical seal diameter	1 1/2 inch
25	Casing Cover	Cast Iron, EN 1561 - GJL-250, ASTM Class 35		1. Rotating ring	Carbon graphite resin impregnated
26	Shaft	Stainless steel, 1.4057, AISI 431		2. Stationary ring	SiC, silicon carbide, sintered press. less
27	Wear ring	Stainless steel, 1.4301, AISI 304		3. Secondary seal	Ethylene propylene rubber (EPDM)
28	Impeller lock nut and washer	A4 (1.4401)		4. Springs	CrNiMo - Steel
29	Impeller key	Stainless steel, 1.4571, AISI 316Ti		5. Others	EPDM - WRAS
30	Fill and drain plugs	Galvanized carbon steel, EN 10277-3, AISI 1213 / 1215		Gaskets of the pump	Ethylene propylene rubber (EPDM)
31	Bearing bracket	Cast Iron, EN 1561 - GJL-250, ASTM Class 35			
32					
33					
34					
35					
36					
37					
38					
39					
40					
41					

Motor data					
Electrical and dimensional data refer to IE3 motor					
42	Manufacturer	Lowara			
43	Specific design	IE3 3ph Flange Motor - Premium Efficiency			
44	Type	PLM 132 B5 7,5 kW			
45	Rated power	10.058 hp	Rated current	26.6 A	
46	Nominal speed	1746 rpm	Rated voltage	220 V	
47	Frame size	132	Service factor	1	
48	Weight	lb 146.8	Degree of protection	IP55	

Remarks					
49					
50					
50					
52					

NSCS50-315/75/P46PCC4

Performance curve

Company name
Contact
Phone number
e-mail address

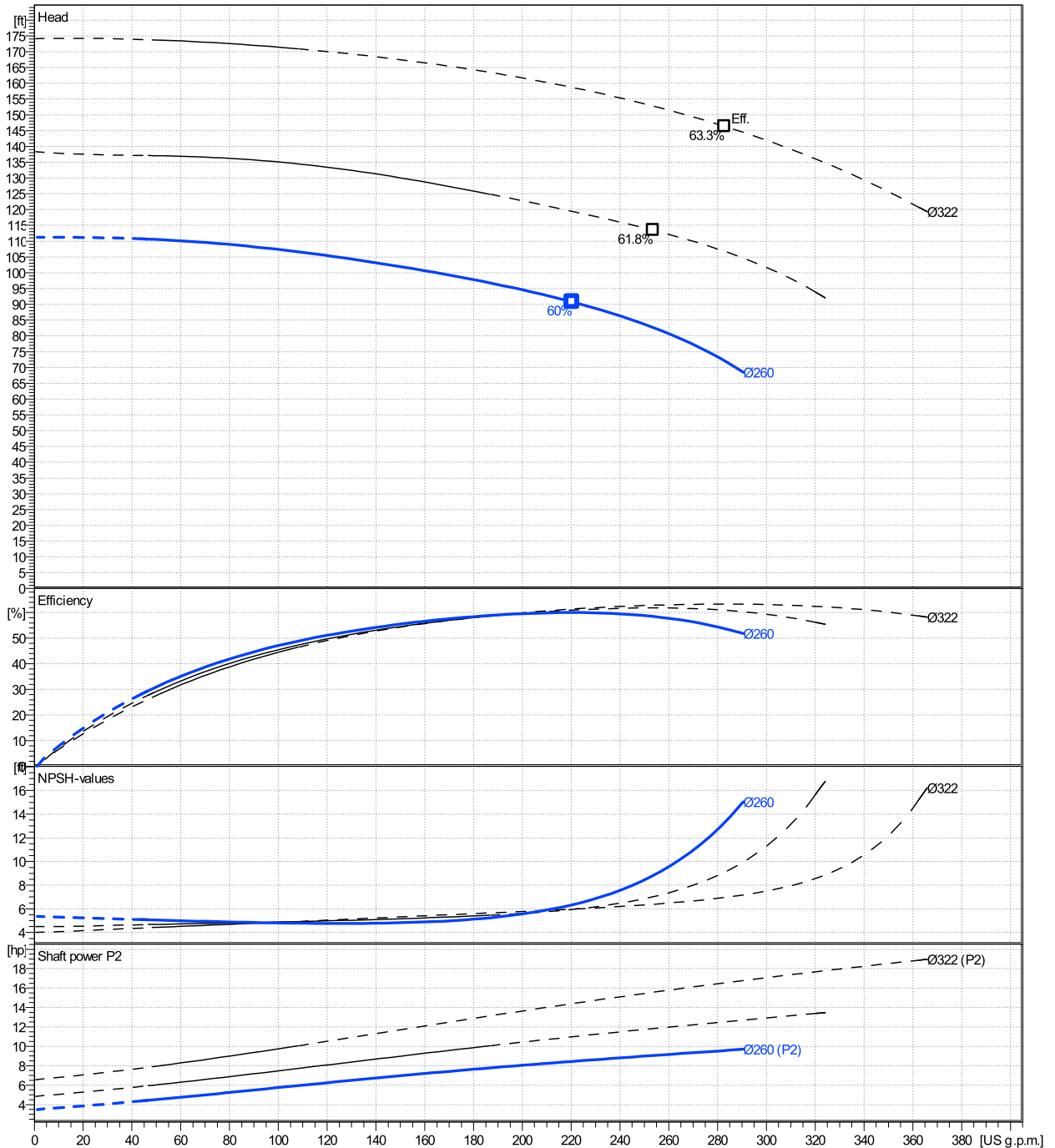
	Ø mm	Pump capacity Operating range η			Pump head H(Q=0) η		Shaft power P2 P2(Q=0) η			Frequency Hz	
		Min. US g.p.m.	Max. US g.p.m.	Max. US g.p.m.	ft	Max. ft	hp	Max. hp	η	rpm	
actual	10 1/4	46.2	291	220	111	90.8		9.7	8.45	60	1765
Min.	0	/	/	220	111	90.8		/	8.45		0
Max.	12 11/16	/	/	283	174	146		/	16.5		0
										Nominal flow	US g.p.m.
										Nominal head	ft
										Inlet pressure	psi
										Static head	ft

Power datas referred to:

hydr. Performance acceptance acc. To EN ISO 9906 Class Grade 3B

Water, pure [100%] ; 39.2°F; 62.4lb/ft³; 1.69E-5ft²/s

MEI: >=0,70 - according to Ecodesign Directive 2009/125/EC and Regulation (EU) No.547/2012



NSCS50-315/75/P46PCC4

Dimensions

Company name
Contact
Phone number
e-mail address

Blockpump

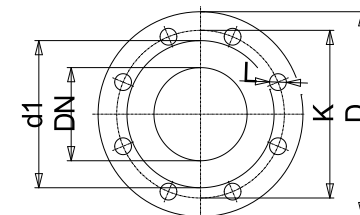
PLM 132 B5 7,5 kW

Electrical and dimensional data refer to IE3 motor

Dimensions		[inch]	
a	4 ¹⁵ / ₁₆	Volumen	1 ¹ / ₁₂₈
AD	7 ¹ / ₂	x	5 ¹ / ₂
b	2 ⁹ / ₁₆		
Bmax	16 ¹ / ₄		
CTO			
DNd	1 ¹⁵ / ₁₆		
DNs	2 ⁹ / ₁₆		
E	3/8"		
f	8 ¹ / ₄		
F	3/8"		
g1	9 ⁹ / ₁₆		
h1	8 ⁷ / ₈		
h2	11 ¹ / ₃₂		
Hmax	19 ⁷ / ₈		
L	29 ¹ / ₈		
L	29 ¹ / ₈		
m1	4 ¹⁵ / ₁₆		
m2	3 ³ / ₄		
n1	13 ⁹ / ₁₆		
n2	11 ¹ / ₃₂		
P	11 ¹³ / ₁₆		
PM1	1/4"		
s1	9 ⁹ / ₁₆		
Type	A		

Weight	
Total weight	149.6 kg

Connections			
Suction nozzle		Discharge nozzle	
DN65		DN50	
PN10/16		PN10/16	
EN1092-2		EN1092-2	
C	1 ³ / ₁₆	C	1 ³ / ₁₆
D	7 ⁵ / ₁₆	D	6 ¹ / ₂
d1	4 ⁵ / ₈	d1	3 ⁷ / ₈
K	5 ¹¹ / ₁₆	K	4 ¹⁵ / ₁₆
L	3/4	L	3/4
Z	3/16	Z	3/16



Value C, D may vary from Standard

Dimensions and weight without obligation

Project	Xylect-20178266	Created by		Last update	1/10/2025
Block	NSCS50-315/150/P46PCC4	Created on	1/10/2025		